

TRANSIT DEVELOPMENT PLAN

2014-2019



Approved: August 20, 2014



Traducción: Disponible mediante solicitud.

Email: cchase@skagittransit.org

Teléfono: 360-757-5179

BOARD OF DIRECTORS

Jill Boudreau, Chair
Mayor, Mount Vernon

Kenneth Dahlstedt
Skagit County Commissioner

Sharon Dillon
Skagit County Commissioner

Steve Sexton, Vice Chair
Mayor, Burlington

Ron Wesen
Skagit County Commissioner

Mike Anderson
Mayor, Sedro-Woolley

Laurie Gere
Mayor Anacortes

Rick DeGloria
Burlington City Council

Dale Ragan
Mount Vernon City Council

EXECUTIVE DIRECTOR

Dale S. O'Brien

MANAGERS

Motoko Pleasant, Finance & Administration

Troy Fair, Operations

Chris Chidley, Information Technologies

Ben Haigh, Maintenance & Facilities

Introduction

Skagit Transit's Six-Year Transit Development Plan (TDP) identifies how the agency will meet state and local long-range priorities for public transportation through capital improvements, operating changes, and other programs. It also addresses how such programs will be funded. The Plan conforms to the State's transportation system policy goals (RCW 47.04.280) and supports local comprehensive planning and economic objectives within Skagit County. State transportation system policy goals are:

- ✓ Economic vitality. To promote and develop transportation systems that stimulate, support, and enhance the movement of people and goods to ensure a prosperous economy;
- ✓ Preservation. To maintain, preserve, and extend the life and utility of prior investments in transportation systems and services;
- ✓ Safety. To provide for and improve the safety and security of transportation customers and the transportation system;
- ✓ Mobility. To improve the predictable movement of goods and people throughout Washington state;
- ✓ Environment. To enhance Washington's quality of life through transportation investments that promote energy conservation, enhance healthy communities, and protect the environment; and
- ✓ Stewardship. To continuously improve the quality, effectiveness, and efficiency of the transportation system.

Regional goals and priorities are set forth in the *Skagit-Island Counties Metropolitan and Regional Transportation Plan* and are consistent with the goals listed above.

Over the next six years Skagit Transit aims to maintain efficient fixed route service, a growing vanpool program, and ADA complementary transit service within three-quarters of a mile of local fixed route lines. Over the next six years, Skagit Transit also plans to modestly expand service into under-served, and unserved urban areas and to expand service days and hours on routes where demand has or will surpass the current level of service. Actions planned over the next six years are intended to conserve energy and improve access to employment centers, shopping areas, health facilities, housing areas, education facilities, and other existing bus, rail, and ferry systems for all persons irrespective of age, income or physical challenges.

This document provides a framework for guiding service delivery over the next six years. It is reviewed annually and amended to reflect funding realities and changing service needs or objectives. This document is also a tool for communicating Skagit Transit's short- and mid-range plans to the public and is used within the organization to identify grant opportunities, for procurement planning, for budgetary purposes, and for updating the Regional Transportation Improvement Plan and the State's Transportation Improvement Plan.

Contents

Introduction	4
Section 1: Organization and Funding	7
Section 2: Facilities.....	9
Section 3: Service Characteristics 2013	10
Fixed Route Service	10
ADA Transit	11
Vanpool Program	12
Fares	12
Section 4: Service Connections	13
Section 5: Planning Goals.....	14
Section 6: Planned Activities, 2014-2019.....	15
Section 7: Capital Improvement Program 2014-2019	21
Section 8: Operating Data 2013 to 2019.....	22
Section 9: Operating Revenues and Expenditures 2014-2019	24
Appendix A - Public Participation Process	30
Appendix B – Public Transportation Management System Inventory.....	31

Section 1: Organization and Funding

Skagit Transit was established under RCW 36.57A. The authority was established in 1993 when voters approved a 0.2% local sales tax (\$0.002 per \$1) to support transit service in the Mount Vernon and Burlington areas. Since initial voter approval in 1993, the Public Transit Benefit Area (PTBA), or service area, has expanded to include Anacortes, La Conner, Sedro-Woolley, Lyman, Hamilton, and Concrete. Voters in unincorporated South Fidalgo Island, Shelter Bay, Burlington Country Club, North and Northwest Skagit County, and Big Lake have also been annexed into the PTBA after successful voter initiatives to expand Skagit Transit's service area. In November 2008, voters approved an additional 0.2% sales tax to support transit service in the PTBA. Currently Skagit Transit is supported by a 0.4% sales tax. This equates to \$0.04 for every \$10 spent within the PTBA. Fares as well as capital and operating grants also support the expense of the transit system.

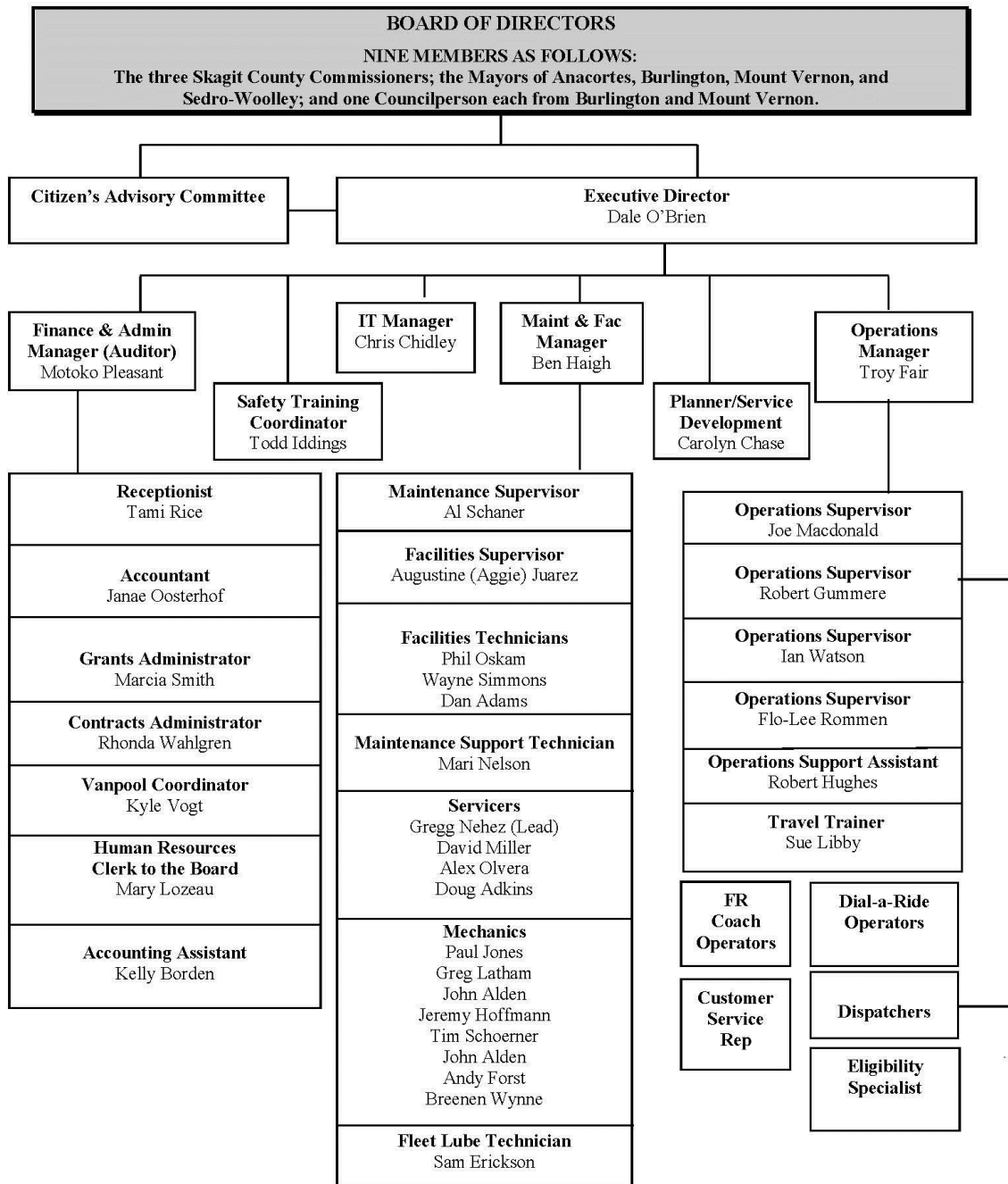
Skagit Transit is governed by a Board of Directors consisting of nine-members, including the:

- Three Skagit County Commissioners,
- Mayor of Anacortes,
- Mayor of Burlington,
- Mayor of Mount Vernon,
- Mayor of Sedro Woolley,
- Councilperson from Burlington, and
- Councilperson from Mount Vernon.

The Board of Directors holds monthly public meetings on the 3rd Wednesday of each month.

Skagit Transit's organizational chart is shown on the next page. The number of employees at the end of calendar year 2013 was 115 with 87 full time equivalents.

Skagit Transit Organizational Chart
Effective January 2014



Section 2: Facilities

Skagit Transit has the following office and facility locations:

Maintenance, Operations and Administration (MOA) Office
600 County Shop Lane
Burlington, WA 98233

Skagit Station
105 E. Kincaid Street
Mount Vernon, WA 98273

Skagit Station is a multi-modal transportation facility owned and operated by Skagit Transit. Skagit Transit leases space to AMTRAK and Greyhound and has plans to lease a deli/concessions area.

Park and rides facilities maintained by Skagit Transit include:

1. Chuckanut Park and Ride, located near I-5 Exit 231 in north Burlington. This facility is owned by WSDOT and is operated by Skagit Transit. Skagit Transit is owner of the bus island and transfer station located at the Park and Ride.
2. March's Point Park and Ride, located near Anacortes off Highway 20 at Christianson Rd, the facility is owned by Skagit Transit, the land is leased through a long term lease agreement between Skagit Transit and Shell Oil Products, Inc.
3. South Mount Vernon Park and Ride, located in Mount Vernon just off I-5 on Old Highway 99, this facility is owned by Skagit Transit.
4. Alger Park and Ride, located in Alger just off I-5 at exit 240, this facility is owned by Skagit Transit.

Section 3: Service Characteristics 2013

Skagit Transit provides local fixed route service, commuter bus service, flex route service, ADA transit service, and a vanpool program.

Fixed Route Service

Skagit Transit's fixed route service includes local routes, commuter routes, and flex routes. **In 2013, the number of all fixed route passenger boardings (local, commuter, and flex) increased by 8.2% from 2012.**

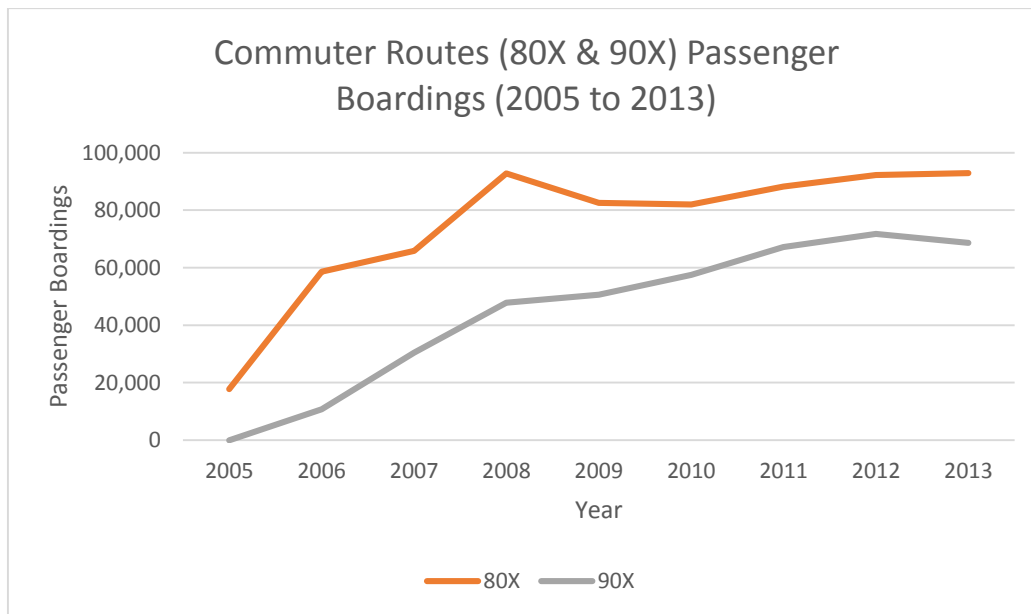
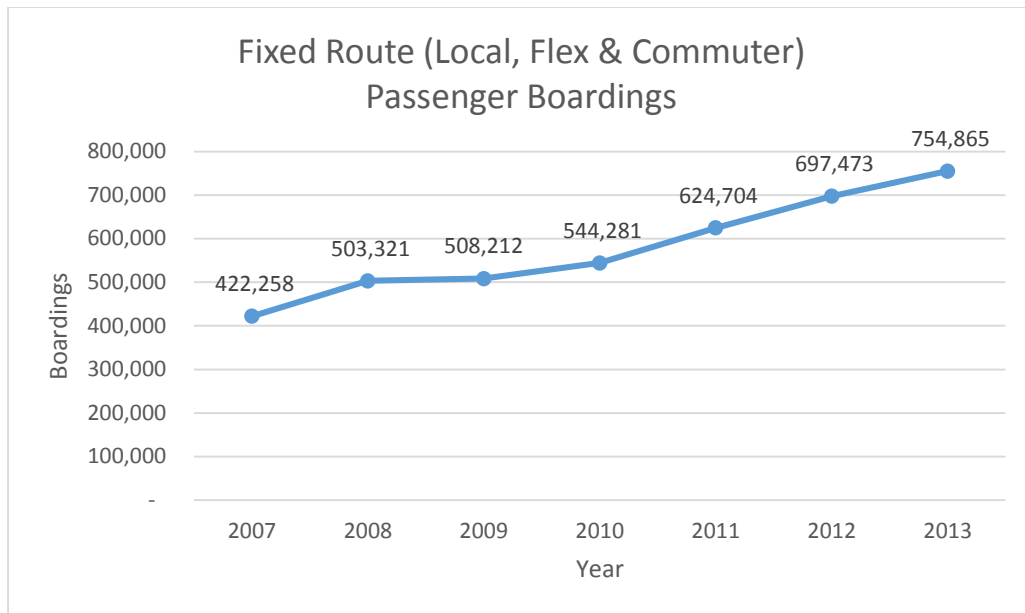
Fixed route service is offered along a pattern of streets or routes, operating on a set schedule of pulses from Skagit Station, Chuckanut Park and Ride, March's Point Park and Ride, and other designated transfer locations including Skagit Valley College, 10th Street and Q Avenue in Anacortes, and the Food Pavilion in Sedro-Woolley.

In 2013 there were 19 fixed routes, including 11 local routes, two commuter routes and six flex routes covering 322 miles of streets, roads, and highways. Local fixed routes operated between 5 and 7 days per week. Commuter routes operate between 5 and 6 days per week. Flex routes operate between 2 and 5 days per week.

All Skagit Transit buses are accessible to persons with ADA requirements. All local fixed route buses have bike racks.

Commuter Routes - Commuter routes are a special category of fixed route service. In 2013, Skagit Transit operated two commuter bus routes, the 80X making express trips between Mt. Vernon and Bellingham and the 90X making express trips between Mt. Vernon and Everett. Commuter bus schedules feature longer stretches of closed-door service and limited stops. Commuter routes also feature peak commute hour scheduling. Whatcom Transit Administration (WTA) and Skagit Transit jointly operate the 80X. In 2013, Island Transit operated commuter bus service from Whidbey and Camano Islands to Mount Vernon and Everett.

Flex Routes - Flex routes are another special category of fixed route service. Flex routes operate on a scheduled route designed to travel up to ¾ mile off the main route to pick-up ADA transit clients. Skagit Transit currently has six flex routes. These routes provide transit service to areas of the PTBA not currently serviced by local fixed route buses. Non-ADA passengers are picked up and transported to urban centers and transit hubs. ADA clients are provided curb to curb service or transferred to another ADA transit vehicle. Four of Skagit Transit's Flex Routes began service in September of 2013.

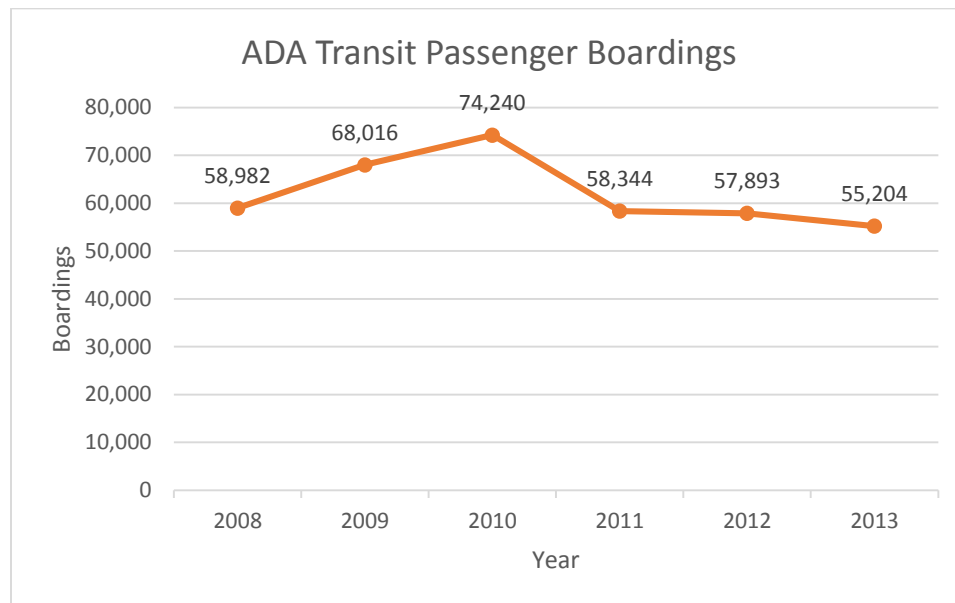


ADA Transit

ADA Transit (also referred to as Dial-A-Ride) provides specialized transportation comparable with Skagit Transit's fixed-route bus service. **In 2013, ADA transit boardings decreased by 4.6% from 2012. This is largely due to the work of Skagit Transit's Travel Trainer who works with ADA clients so that they can begin using fixed route service.**

ADA transit is a pre-scheduled service designed for people who are unable to get to the nearest bus stop or use a fixed-route bus. ADA transit is for individuals whose conditions and/or disabilities prevent them from using Skagit Transit's fixed-route buses. To become an ADA transit client, passengers go through an eligibility application and approval process. Curb-to-curb service is provided to most ADA clients within

the PTBA service area. ADA transit service is a demand response, next-day service. Users are required to call a dispatcher in advance of the trip and inform Skagit Transit of the origin, destination, and time of the trip. It is a shared ride service and clients may be required to remain onboard while other passengers are picked up and dropped off on the way to the rider's destination. ADA transit service operates during the same hours as the fixed routes line it compliments.



Vanpool Program

The Vanpool Program is a service that allows people with long commutes to share the drive to work with others making the same or similar trip. **In 2013, vanpool passenger trips increased by 5.7% from 2012.** Skagit Transit currently has 47 vanpool groups. A vanpool group consists of 5 to 15 individuals with a driver provided from within the vanpool group. Vanpool groups must either start or end their trip in Skagit County. Groups pay a monthly fee and a per mile charge. Skagit Transit maintains the van and provides fuel and insurance. In 2013, the cumulative sum of the distances ridden by each vanpool passenger totaled 5,571,224 miles.

Fares

Current fares have been in place since October 1, 2008 and are as follows:

	REGULAR	YOUTH	REDUCED
Standard Fare	\$1.00	\$0.50	\$0.50
One-Day Pass (local)	\$2.00	\$1.00	\$1.00
31-Day Pass (local)	\$25.00	\$12.50	\$12.50
County Connectors (Commuter Service)	\$2.00	\$1.00	\$1.00
County Connector 31-Day Pass	\$50.00	\$25.00	\$25.00
ADA Transit	No Set Fare / By Donation		
Vanpool Fares	\$200 / Month / Vanpool + Mileage Costs (\$0.30 7-person van & \$0.38 12-15-person van)		

Section 4: Service Connections

Skagit Transit provides services to the following public transportation facilities:

- Skagit Station, Mount Vernon
- Washington State Ferry Terminal & Guemes Island Ferry Terminal, Anacortes
- Alger Park and Ride, Alger
- Chuckanut Park and Ride, Burlington
- March's Point Park and Ride, Anacortes
- South Mount Vernon Park and Ride, Mount Vernon
- Lincoln Creek Park and Ride, Bellingham
- Bellingham Station, Bellingham
- Everett Station, Everett

Skagit Transit provides connections to the following public transportation providers:

- AMTRAK trains – Skagit Station
- Greyhound Bus – Skagit Station
- Washington State Ferry, Anacortes
- Skagit County Guemes Ferry, Anacortes
- Island Transit – Skagit Station & March's Point Park & Ride, Anacortes
- Whatcom Transportation Authority – Skagit Station & Bellingham Station
- Everett Transit – Everett Station
- Community Transit – Everett Station
- Sound Transit – Sounder Train/Bus - Everett Station

Skagit Transit provides services convenient to most of the public schools within our service area including Skagit Valley College's Mount Vernon Campus. Service is also provided to the hospitals in Anacortes, Mount Vernon and Sedro-Woolley as well as to important government centers such as the Skagit County Courthouse and city and town halls.

Through our partnership and joint operating projects with Island Transit and Whatcom Transit Authority, service connections are provided to Western Washington University in Bellingham and the University of Washington in Seattle.

Section 5: Planning Goals

The activities in Section 6 are action strategies that will contribute to the following transportation goals:

1. **Preservation.** Preserve and extend prior investments in existing transportation facilities and the services they provide to people and commerce.
2. **Safety.** Education, training and enforcement to save lives, reduce injuries and protect property.
3. **Stewardship.** To continuously improve the quality, effectiveness, and efficiency of the transportation system.
4. **Mobility.** To facilitate movement of local and commuting citizens to contribute to a strong economy and a better quality of life for Skagit County residents.
5. **Environmental Quality and Health.** To enhance regional quality of life through transportation investments that promote energy conservation, enhance healthy communities and protect the environment.

These goals are in line with the State's transportation goals:

1. **Economic vitality.** To promote and develop transportation systems that stimulate, support, and enhance the movement of people and goods to ensure a prosperous economy;
2. **Preservation.** To maintain, preserve, and extend the life and utility of prior investments in transportation systems and services;
3. **Safety.** To provide for and improve the safety and security of transportation customers and the transportation system;
4. **Mobility.** To improve the predictable movement of goods and people throughout Washington state;
5. **Environment.** To enhance Washington's quality of life through transportation investments that promote energy conservation, enhance healthy communities, and protect the environment; and
6. **Stewardship.** To continuously improve the quality, effectiveness, and efficiency of the transportation system.

Section 6: Planned Activities, 2014-2019

The following matrices describe the planned activities to be undertaken by Skagit Transit from 2014 to 2019. These activities include the deployment of new transit service, the continuation and adjustment of existing service, plan development, facility construction, and equipment purchases. Activities that occur by other entities but involve Skagit Transit funding contributions are noted as “ST Partner Project”.

In 2014, Skagit Transit will begin a feasibility study on the siting and construction of a new Maintenance, Operations, and Administration (MOA) building. The current MOA was built in 1999 on property leased from Skagit County. This parcel is land-locked between the Skagit County Public Works and Parks and Recreation shops. Room is needed to accommodate more vehicles, repair facilities and operations and administrative staff. Grant funds have been secured to complete the feasibility study.

The following tables include a number of capital projects that will require grant funding to complete such as the construction of the new MOA. In the event that grant funding is not available or insufficient to complete a project, the project will be reevaluated.

2014	Planned Activities
Planning	<ul style="list-style-type: none"> • Begin feasibility study on new MOA (Maintenance / Operations / Administration) facility • Complete Transit - Human Services Transportation Plan (<i>ST Partner Project</i>) • Begin work on the Public Participation Plan (<i>ST Partner Project</i>)
Services	<ul style="list-style-type: none"> • Preservation of existing service • Introduce service between March's Point in Anacortes and Skagit Station in Mount Vernon, Route 40X (Expansion) • Restructure under-performing Flex routes • Realign Route 8 and 750 to better serve Lyman residents
Facilities	<ul style="list-style-type: none"> • Complete Alger Park and Ride • Complete Sedro-Woolley Park and Ride (<i>ST Partner Project</i>) • Improve safety and security at Skagit Station, the Park and Rides, and the MOA by making camera upgrades • Continue to improve ADA accessibility and comfort at bus stops by installing new and replacement shelters and ADA compliant pads • Upgrades to MOA including: a new phone system, air conditioning in server room, upgrading wiring, and purchasing a generator • Upgrades to Skagit Station including: a wiring upgrade, conference room technology upgrades, and installing a new public announcement system
Equipment	<ul style="list-style-type: none"> • Purchase 2 ARBOCs for new feeder routes in Burlington and Sedro-Woolley for service starting 2015 (Expansion) • Purchase 1, 35-foot bus for Route 40X (Expansion) • Purchase 1, 35-foot bus to expand fleet and allow for new East Mount Vernon Route (Expansion) • Purchase 7 replacement Vanpool vehicles (Replacement) • Purchase 2 expansion Vanpool vehicles (Expansion) • Purchase 2 replacement ADA Paratransit vehicles (Replacement) • Purchase 1 expansion ADA Paratransit vehicle (Expansion) • Purchase 2 replacement support vehicles (Replacement) • Replace MDTs in ADA Paratransit vehicles and upgrade to tablets or Rangers • Purchase Flex software

2015	Planned Activities
Planning	<ul style="list-style-type: none"> Completed feasibility study on new MOA facility Complete Public Participation Plan (<i>ST Partner Project</i>) Title VI Program Report Preliminary planning with Skagit Valley Community College and City of Mount Vernon on a new transfer station at the community college and a use agreement that would solidify existing transit activity
Services	<ul style="list-style-type: none"> Preservation of existing service including County Connector Routes 80X and 90X Introduce 2 new feeder routes, one in Burlington and one in Sedro-Woolley, and realign Route 300 with service starting September 1, 2015 (Expansion) Introduce East Mount Vernon Route and realign route 305 (Expansion)
Facilities	<ul style="list-style-type: none"> Acquire land for MOA Improve safety and security at Skagit Station and the Park and Rides by investing in camera upgrades Install bicycle locker at March's Point Continue to improve ADA accessibility and comfort at bus stops by installing new and replacement shelters and ADA compliant pads
Equipment	<ul style="list-style-type: none"> Purchase 1, 35-foot bus to expand fleet for West Mount Vernon Route that will service Hwy 99 and the new County Jail (Expansion) Purchase 1, 35-foot bus for a new fixed route serving east county currently served by Flex Route 8 with service to start September 1, 2016 (Expansion) Outfit fixed route buses with next stop technologies Replace 3, 26-foot fixed route buses (Replacement) Replace 1, 23-foot fixed route bus (Replacement) Purchase 9 replacement Vanpool vehicles (Replacement) Purchase 6 replacement ADA Paratransit vehicles (Replacement) Purchase 5 new vanpool vehicles (Expansion)

2016	Planned Activities
Planning	<ul style="list-style-type: none"> • Begin preliminary MOA engineering and design and environmental permitting • Continue planning with Skagit Valley Community College and City of Mount Vernon on a new transfer station at the community college and a use agreement that would solidify existing transit activity
Services	<ul style="list-style-type: none"> • Preservation of existing service including County Connector Routes 80X and 90X • Introduce fixed route service that would serve areas currently served by Flex Route 8 and add complementary paratransit route (Expansion) • Add additional service days to Route 195 (Expansion)
Facilities	<ul style="list-style-type: none"> • Install electric vehicle charging stations at Skagit Stations • Upgrade transformer at Skagit Station • Continue to improve ADA accessibility and comfort at bus stops by installing new and replacement shelters and ADA compliant pads
Equipment	<ul style="list-style-type: none"> • Replace 3, 30-foot buses for fixed route service (Replacement) • Purchase 24 replacement Vanpool vehicles (Replacement) • Purchase 1 support vehicle (Replacement) • Purchase 5 new vanpool vehicles (Expansion) • Outfit fixed route buses with next stop technology

2017	Planned Activities
Planning	<ul style="list-style-type: none"> • Complete MOA design and engineering
Services	<ul style="list-style-type: none"> • Preservation of existing service including County Connector Routes 80X and 90X • January 1, 2017 - Introduce a West Mount Vernon Route that will service Hwy 99 and the new County Jail (Expansion)
Facilities	<ul style="list-style-type: none"> • Continue to improve ADA accessibility and comfort at bus stops by installing new and replacement shelters and ADA compliant pads
Equipment	<ul style="list-style-type: none"> • Purchase 2 replacement Vanpool vehicles (Replacement) • Purchase 4 replacement Paratransit vehicles (Replacement) • Purchase 1 support vehicle (Replacement) • Replace 1, 23-foot bus for fixed route service (Replacement) • Purchase 5 new vanpool vehicles (Expansion)

2018	Planned Activities
Planning	<ul style="list-style-type: none"> • Complete Transit Human Services Transportation Plan (<i>ST Partner Project</i>)
Services	<ul style="list-style-type: none"> • Preservation of existing service including County Connector Routes 80X and 90X
Facilities	<ul style="list-style-type: none"> • MOA construction begins • Continue to improve ADA accessibility and comfort at bus stops by installing new and replacement shelters and ADA compliant pads
Equipment	<ul style="list-style-type: none"> • Replace 2, 23-foot buses for fixed route service (Replacement) • Purchase 5 new vanpool vehicles (Expansion)

2019	Planned Activities
Planning	<ul style="list-style-type: none"> • Design and engineering for Skagit Station bus island cover
Services	<ul style="list-style-type: none"> • Preservation of existing service including County Connector Routes 80X and 90X
Facilities	<ul style="list-style-type: none"> • MOA construction completed • Continue to improve ADA accessibility and comfort at bus stops by installing new and replacement shelters and ADA compliant pads
Equipment	<ul style="list-style-type: none"> • Replace 5, 40-foot buses for fixed route service (Replacement) • Replace 6, 31-foot buses for fixed route service (Replacement) • Replace 1, 23-foot bus for fixed route service (Replacement) • Purchase 5 new vanpool vehicles (Expansion)

SUMMARY: VEHICLE EXPANSION AND PRESERVATION 2014-2019			
Year	Type	Expansion (Quantity)	Replacement (Quantity)
2014	Fixed Route	4	0
	Paratransit	1	2
	Vanpool	2	7
	Support	0	2
2015	Fixed Route	2	4
	Paratransit	0	6
	Vanpool	5	9
	Support	0	0
2016	Fixed Route	0	3
	Paratransit	0	0
	Vanpool	5	24
	Support	0	1
2017	Fixed Route	0	1
	Paratransit	0	4
	Vanpool	5	2
	Support	0	1
2018	Fixed Route	0	2
	Paratransit	0	0
	Vanpool	5	0
	Support	0	0
2019	Fixed Route	0	12
	Paratransit	0	0
	Vanpool	5	0
	Support	0	0

Section 7: Capital Improvement Program 2014-2019

The Capital Improvement Program includes the capital expenses identified in Section 6. Financial tables do not reflect capital expansion costs for capital construction projects. Skagit Transit will actively seek grant funding to implement these projects, and they will progress as grant funding is made available.

Grant funds will be sought for all capital construction projects. In the event that grant funding is not available or insufficient to complete the capital construction project, a reevaluation of the project will be performed.

Preservation	2014	2015	2016	2017	2018	2019
Maint/Admin equip/facility	\$ 234,000	\$ 241,020	\$ 248,251	\$ -	\$ -	\$ -
Dial-a-ride vehicles	\$ 240,000	\$ 720,000	\$ -	\$ 1,188,208	\$ -	\$ -
Service vehicles	\$ 90,000	\$ -	\$ 31,000	\$ 31,930	\$ -	\$ -
Transit Centers	\$ 367,613	\$ -	\$ 10,000	\$ -	\$ -	\$ -
Transit Shelters	\$ -	\$ -	\$ -	\$ -	\$ -	\$ -
Transit buses	\$ 2,175,231	\$ 690,000	\$ 2,733,000	\$ 159,135	\$ 360,000	\$ 4,540,000
Vanpool vans	\$ 187,500	\$ 243,000	\$ 2,667,440	\$ 59,410	\$ -	\$ -
Subtotals	\$ 3,294,344	\$ 1,894,020	\$ 5,689,691	\$ 1,438,683	\$ 360,000	\$ 4,540,000
Expansion	2014	2015	2016	2017	2018	2019
Maint/Admin equip/facility	\$ 268,443	\$ 50,000	\$ -	\$ -	\$ -	\$ -
Dial-a-ride vehicles	\$ 120,000	\$ -	\$ -	\$ -	\$ -	\$ -
Service vehicles	\$ -	\$ -	\$ -	\$ -	\$ -	\$ -
Transit Centers	\$ -	\$ 1,500,000	\$ -	\$ 500,000	\$ -	\$ -
Transit Shelters	\$ -	\$ 23,540	\$ 23,175	\$ 19,100	\$ 19,680	\$ 19,680
Transit buses	\$ -	\$ 1,640,000	\$ 2,532,000	\$ -	\$ -	\$ -
Vanpool vans	\$ 50,000	\$ 139,050	\$ 143,222	\$ 156,502	\$ 151,944	\$ 156,502
Subtotals	\$ 438,443	\$ 3,352,590	\$ 2,698,397	\$ 675,602	\$ 171,624	\$ 176,182
Total Capital	\$ 3,732,787	\$ 5,246,610	\$ 8,388,088	\$ 2,114,285	\$ 531,624	\$ 4,716,182

Section 8: Operating Data 2013 to 2019

Except 2013, all figures are reported in units of 1,000.

<u>Fixed Routes</u>	<u>2013</u>	<u>2014</u>	<u>2015</u>	<u>2016</u>	<u>2017</u>	<u>2018</u>	<u>2019</u>
Vehicle hours	58,197	60	66	73	76	78	81
Vehicle revenue hours	55,427	57	63	69	73	75	77
Vehicle miles	899,601	927	1019	1121	1177	1213	1249
Vehicle revenue miles	845,857	871	958	1054	1107	1140	1174
Passenger trips	644,968	664	731	804	844	869	895
Fatalities	0						
Reportable injuries	0						
Collisions	0						
Diesel fuel consumed	144,180	149	163	180	189	194	200
<u>Commuter Routes</u>	<u>2013</u>	<u>2014</u>	<u>2015</u>	<u>2016</u>	<u>2017</u>	<u>2018</u>	<u>2019</u>
Vehicle hours	8,131	9	10	10	11	12	12
Vehicle revenue hours	7,536	8	9	9	10	11	11
Vehicle miles	266,746	285	314	323	356	391	403
Vehicle revenue miles	259,160	277	305	314	346	380	392
Passenger trips	109,897	118	129	133	147	161	166
Fatalities	0						
Reportable injuries	0						
Collisions	0						
Diesel fuel consumed	51,820	55	61	63	69	76	78

<u>ADA Demand Response</u>	<u>2013</u>	<u>2014</u>	<u>2015</u>	<u>2016</u>	<u>2017</u>	<u>2018</u>	<u>2019</u>
Vehicle hours	27,200	28	29	30	31	32	33
Vehicle revenue hours	25,516	26	27	28	29	30	31
Vehicle miles	328,115	338	348	366	376	388	399
Vehicle revenue miles	280,381	289	297	312	322	331	341
Passenger trips	55,204	57	59	61	63	65	67
Fatalities	0						
Reportable injuries	0						
Collisions	0						
Diesel fuel consumed	36,611	38	39	41	42	43	45
<u>Vanpools</u>	<u>2013</u>	<u>2014</u>	<u>2015</u>	<u>2016</u>	<u>2017</u>	<u>2018</u>	<u>2019</u>
Vehicle miles	1,056,349	1088	1121	1154	1189	1225	1261
Vehicle revenue miles	1,056,349	1088	1121	1154	1189	1225	1261
Passenger trips	126,746	131	134	138	143	147	151
Fatalities	0						
Reportable injuries	0						
Collisions	0						
Gasoline consumed	63,508	65	67	69	71	74	76

Section 9: Operating Revenues and Expenditures 2014-2019

		2014		
		General Fund	Capital Fund	Total
Beginning Cash Balance January 1st.		\$ 11,462,768	\$ 4,250,000	\$ 15,712,768
Operating Revenues				
	Sales Tax (transit portion)	8,505,000	-	8,505,000
	Fares	425,000	-	425,000
	Van Pools	400,000	-	400,000
	Federal Operating Grants	1,811,523	-	1,811,523
	State Operating Grants	411,715	-	411,715
	Other Grants	2,500	-	2,500
	Other Revenues	28,000	-	28,000
	Transfers	-	-	-
	Total Operating Revenues	11,583,738	-	11,583,738
	Subtotal Available	23,046,506	4,250,000	27,296,506
Operating Expenses				
	Vanpool P&M	684,897	-	684,897
	Vanpool Sys Expand	-	-	-
	Fixed Route P&M	6,775,088	-	6,775,088
	Fixed Route Sys Expand	-	-	-
	Dial-a-Ride (ADA) P&M	4,226,968	-	4,226,968
	Dial-a-Ride (ADA) Expand	-	-	-
	Other	-	-	-
	Annual Depreciation	1,500,000	(1,500,000)	-
	Total Operating Expenses	10,186,954	(1,500,000)	11,686,954
	Net Cash Available	12,859,552	5,750,000	15,609,552
Capital Revenues				
	Federal Grants	-	508,378	508,378
	Federal 5309 Grants	-	-	-
	Federal 5310 Grants	-	-	-
	Federal 5311 Grants	-	-	-
	Federal 5313 Grants	-	-	-
	State Grants	-	385,943	385,943
	Other	-	-	-
	Fund Transfers (Matching & Non-Grant)	(3,020,967)	3,020,967	-
	Subtotal Capital Revenue	(3,020,967)	3,915,288	894,321
Capital Expenditures				
	System P&M			
	Maintenance & Other Equipment	-	234,000	234,000
	FixedRoute	-	2,175,231	2,175,231
	Dial-a-Ride	-	240,000	240,000
	Service/Staff Vehicles	-	90,000	90,000
	Transit Center	-	367,613	367,613
	Transit Shelters	-	-	-
	Transit Buses	-	-	-
	Vanpool Vans	-	187,500	187,500
	System Expansion			
	Maintenance & Other Equipment	-	268,443	268,443
	Dial-a-Ride	-	120,000	120,000
	FixedRoute	-	-	-
	Service/Staff Vehicles	-	-	-
	Transit Center	-	-	-
	Transit Shelters	-	-	-
	Transit Buses	-	-	-
	Vanpool Vans	-	50,000	50,000
	Subtotal Capital Obligations	-	3,732,787	3,732,787
	Ending Cash Balance 12/31	\$ 9,838,585	\$ 5,932,501	\$ 12,771,086

		2015		
		General Fund	Capital Fund	Total
Beginning Cash Balance January 1st.		\$ 9,838,585	\$ 5,932,501	\$ 15,771,086
Operating Revenues				-
	Sales Tax (transit portion)	8,675,100		8,675,100
	Fares	437,750	-	437,750
	Van Pools	412,000	-	412,000
	Federal Operating Grants	1,847,753	-	1,847,753
	State Operating Grants	419,949	-	419,949
	Other Grants	2,500	-	2,500
	Other Revenues	28,560	-	28,560
	Transfers			-
	Total Operating Revenues	11,823,613	-	11,823,613
	Subtotal Available	21,662,198	5,932,501	27,594,699
Operating Expenses				
	Vanpool P&M	698,595	-	698,595
	Vanpool Sys Expand		-	-
	Fixed Route P&M	6,910,590	-	6,910,590
	Fixed Route Sys Expand	676,678	-	676,678
	Dial-a-Ride (ADA) P&M	4,311,508	-	4,311,508
	Dial-a-Ride (ADA) Expand	42,281	-	42,281
	Other		-	-
	Annual Depreciation	1,545,000	(1,545,000)	-
	Total Operating Expenses	11,094,652	(1,545,000)	12,639,652
	Net Cash Available	10,567,547	7,477,501	14,955,048
Capital Revenues				
	Federal Grants	-		-
	Federal 5309 Grants	-	-	-
	Federal 5310 Grants	-	-	-
	Federal 5311 Grants	-	-	-
	Federal 5313 Grants	-	-	-
	State Grants	-	111,240	111,240
	Other	-		-
	Fund Transfers (Matching & Non-Grant)			-
	Subtotal Capital Revenue	-	111,240	111,240
Capital Expenditures				
	System P&M			
	Maintenance & Other Equipment	-	241,020	241,020
	FixedRoute	-	690,000	690,000
	Dial-a-Ride	-	720,000	720,000
	Service/Staff Vehicles	-	-	-
	Transit Center	-		-
	Transit Shelters	-		-
	Transit Buses	-		-
	Vanpool Vans	-	243,000	243,000
	System Expansion			
	Maintenance & Other Equipment	-	50,000	50,000
	Dial-a-Ride	-		-
	FixedRoute	-	800,000	800,000
	Service/Staff Vehicles	-		-
	Transit Center	-	1,500,000	1,500,000
	Transit Shelters	-	23,540	23,540
	Transit Buses	-	840,000	840,000
	Vanpool Vans	-	139,050	139,050
	Subtotal Capital Obligations	-	5,246,610	5,246,610
	Ending Cash Balance 12/31	\$ 10,567,547	\$ 2,342,131	\$ 9,819,678

		2016		
		General Fund	Capital Fund	Total
Beginning Cash Balance January 1st.		\$ 10,567,547	\$ 2,342,131	\$ 12,909,678
Operating Revenues				-
	Sales Tax (transit portion)	8,848,602	-	8,848,602
	Fares	450,883	-	450,883
	Van Pools	424,360	-	424,360
	Federal Operating Grants	1,884,709	-	1,884,709
	State Operating Grants	428,348	-	428,348
	Other Grants	2,500	-	2,500
	Other Revenues	29,131	-	29,131
	Transfers	-	-	-
	Total Operating Revenues	12,068,533	-	12,068,533
	Subtotal Available	22,636,079	2,342,131	24,978,210
Operating Expenses				
	Vanpool P&M	712,567	-	712,567
	Vanpool Sys Expand	-	-	-
	Fixed Route P&M	7,048,802	-	7,048,802
	Fixed Route Sys Expand	571,622	-	571,622
	Dial-a-Ride (ADA) P&M	4,397,738	-	4,397,738
	Dial-a-Ride (ADA) Expand	-	-	-
	Other	-	-	-
	Annual Depreciation	1,591,350	(1,591,350)	-
	Total Operating Expenses	11,139,378	(1,591,350)	12,730,728
	Net Cash Available	11,496,701	3,933,481	12,247,482
Capital Revenues				
	Federal Grants	-	-	-
	Federal 5309 Grants	-	-	-
	Federal 5310 Grants	-	-	-
	Federal 5311 Grants	-	-	-
	Federal 5313 Grants	-	-	-
	State Grants	-	114,577	114,577
	Other	-	-	-
	Fund Transfers (Matching & Non-Grant)	(3,000,000)	3,000,000	-
	Subtotal Capital Revenue	(3,000,000)	3,114,577	114,577
Capital Expenditures				
	System P&M			
	Maintenance & Other Equipment	-	248,251	248,251
	FixedRoute	-	900,000	900,000
	Dial-a-Ride	-	-	-
	Service/Staff Vehicles	-	31,000	31,000
	Transit Center	-	10,000	10,000
	Transit Shelters	-	-	-
	Transit Buses	-	1,833,000	1,833,000
	Vanpool Vans	-	667,440	667,440
	System Expansion			
	Maintenance & Other Equipment	-	-	-
	Dial-a-Ride	-	-	-
	FixedRoute	-	-	-
	Service/Staff Vehicles	-	-	-
	Transit Center	-	-	-
	Transit Shelters	-	23,175	23,175
	Transit Buses	-	2,532,000	2,532,000
	Vanpool Vans	-	143,222	143,222
	Subtotal Capital Obligations	-	6,388,087	6,388,087
	Ending Cash Balance 12/31	\$ 8,496,701	\$ 659,971	\$ 5,973,972

		2017		
		General Fund	Capital Fund	Total
Beginning Cash Balance January 1st.		\$ 8,496,701	\$ 659,971	\$ 9,156,672
Operating Revenues				-
	Sales Tax (transit portion)	9,025,574	-	9,025,574
	Fares	464,409	-	464,409
	Van Pools	437,091	-	437,091
	Federal Operating Grants	1,922,403	-	1,922,403
	State Operating Grants	436,915	-	436,915
	Other Grants	2,500	-	2,500
	Other Revenues	29,714	-	29,714
	Transfers	-	-	-
	Total Operating Revenues	12,318,606	-	12,318,606
Subtotal Available		20,815,306	659,971	21,475,277
Operating Expenses				
	Vanpool P&M	726,818	-	726,818
	Vanpool Sys Expand	-	-	-
	Fixed Route P&M	7,189,778	-	7,189,778
	Fixed Route Sys Expand	386,250	-	386,250
	Dial-a-Ride (ADA) P&M	4,485,693	-	4,485,693
	Dial-a-Ride (ADA) Expand	-	-	-
	Other	-	-	-
	Annual Depreciation	1,639,091	(1,639,091)	-
	Total Operating Expenses	11,149,448	(1,639,091)	12,788,539
Net Cash Available		9,665,858	2,299,062	8,686,739
Capital Revenues				
	Federal Grants	-	-	-
	Federal 5309 Grants	-	-	-
	Federal 5310 Grants	-	-	-
	Federal 5311 Grants	-	-	-
	Federal 5313 Grants	-	-	-
	State Grants	-	118,015	118,015
	Other	-	-	-
	Fund Transfers (Matching & Non-Grant)	(1,500,000)	1,500,000	-
Subtotal Capital Revenue		(1,500,000)	1,618,015	118,015
Capital Expenditures				
	System P&M			
	Maintenance & Other Equipment	-	-	-
	FixedRoute	-	159,135	159,135
	Dial-a-Ride	-	1,188,208	1,188,208
	Service/Staff Vehicles	-	31,930	31,930
	Transit Center	-	-	-
	Transit Shelters	-	-	-
	Transit Buses	-	-	-
	Vanpool Vans	-	59,410	59,410
	System Expansion			
	Maintenance & Other Equipment	-	-	-
	Dial-a-Ride	-	-	-
	FixedRoute	-	-	-
	Service/Staff Vehicles	-	-	-
	Transit Center	-	500,000	500,000
	Transit Shelters	-	19,100	19,100
	Transit Buses	-	-	-
	Vanpool Vans	-	147,518	147,518
Subtotal Capital Obligations		-	2,105,302	2,105,302
Ending Cash Balance 12/31		\$ 8,165,858	\$ 1,811,775	\$ 6,699,452

		2018		
		General Fund	Capital Fund	Total
Beginning Cash Balance January 1st.		\$ 8,165,858	\$ 1,811,775	\$ 9,977,633
Operating Revenues				-
	Sales Tax (transit portion)	9,206,086	-	9,206,086
	Fares	478,341	-	478,341
	Van Pools	450,204	-	450,204
	Federal Operating Grants	1,960,851	-	1,960,851
	State Operating Grants	445,654	-	445,654
	Other Grants	2,500	-	2,500
	Other Revenues	30,308	-	30,308
	Transfers	-	-	-
	Total Operating Revenues	12,573,943	-	12,573,943
Subtotal Available		20,739,801	1,811,775	22,551,575
Operating Expenses				
	Vanpool P&M	741,354	-	741,354
	Vanpool Sys Expand	-	-	-
	Fixed Route P&M	7,333,573	-	7,333,573
	Fixed Route Sys Expand	-	-	-
	Dial-a-Ride (ADA) P&M	4,575,407	-	4,575,407
	Dial-a-Ride (ADA) Expand	102,960	-	102,960
	Other	-	-	-
	Annual Depreciation	1,688,263	(1,688,263)	-
	Total Operating Expenses	11,065,031	(1,688,263)	12,753,294
Net Cash Available		9,674,770	3,500,038	9,798,281
Capital Revenues				
	Federal Grants	-	-	-
	Federal 5309 Grants	-	-	-
	Federal 5310 Grants	-	-	-
	Federal 5311 Grants	-	-	-
	Federal 5313 Grants	-	-	-
	State Grants	-	121,555	121,555
	Other	-	-	-
	Fund Transfers (Matching & Non-Grant)	-	-	-
Subtotal Capital Revenue		-	121,555	121,555
Capital Expenditures				
	System P&M			
	Maintenance & Other Equipment	-	-	-
	FixedRoute	-	360,000	360,000
	Dial-a-Ride	-	-	-
	Service/Staff Vehicles	-	-	-
	Transit Center	-	-	-
	Transit Shelters	-	-	-
	Transit Buses	-	-	-
	Vanpool Vans	-	-	-
	System Expansion			
	Maintenance & Other Equipment	-	-	-
	Dial-a-Ride	-	-	-
	FixedRoute	-	-	-
	Service/Staff Vehicles	-	-	-
	Transit Center	-	-	-
	Transit Shelters	-	19,680	19,680
	Transit Buses	-	-	-
	Vanpool Vans	-	151,944	151,944
Subtotal Capital Obligations		-	531,624	531,624
Ending Cash Balance 12/31		\$ 9,674,770	\$ 3,089,969	\$ 9,388,212

		2019		
		General Fund	Capital Fund	Total
Beginning Cash Balance January 1st.		\$ 9,674,770	\$ 3,089,969	\$ 12,764,739
Operating Revenues				-
	Sales Tax (transit portion)	9,390,207	-	9,390,207
	Fares	492,691	-	492,691
	Van Pools	463,710	-	463,710
	Federal Operating Grants	2,000,068	-	2,000,068
	State Operating Grants	454,567	-	454,567
	Other Grants	2,500	-	2,500
	Other Revenues	30,914	-	30,914
	Transfers	-	-	-
	Total Operating Revenues	12,834,657	-	12,834,657
	Subtotal Available	22,509,427	3,089,969	25,599,396
Operating Expenses				
	Vanpool P&M	756,182	-	756,182
	Vanpool Sys Expand	-	-	-
	Fixed Route P&M	7,480,245	-	7,480,245
	Fixed Route Sys Expand	-	-	-
	Dial-a-Ride (ADA) P&M	4,666,915	-	4,666,915
	Dial-a-Ride (ADA) Expand	102,960	-	102,960
	Other	-	-	-
	Annual Depreciation	1,738,911	(1,738,911)	-
	Total Operating Expenses	11,267,390	(1,738,911)	13,006,301
	Net Cash Available	11,242,037	4,828,880	12,593,095
Capital Revenues				
	Federal Grants	-	-	-
	Federal 5309 Grants	-	-	-
	Federal 5310 Grants	-	-	-
	Federal 5311 Grants	-	-	-
	Federal 5313 Grants	-	-	-
	State Grants	-	125,202	125,202
	Other	-	-	-
	Fund Transfers (Matching & Non-Grant)	-	-	-
	Subtotal Capital Revenue	-	125,202	125,202
Capital Expenditures				
	System P&M			
	Maintenance & Other Equipment	-	-	-
	FixedRoute	-	4,540,000	4,540,000
	Dial-a-Ride	-	-	-
	Service/Staff Vehicles	-	-	-
	Transit Center	-	-	-
	Transit Shelters	-	-	-
	Transit Buses	-	-	-
	Vanpool Vans	-	-	-
	System Expansion	-	-	-
	Maintenance & Other Equipment	-	-	-
	Dial-a-Ride	-	-	-
	FixedRoute	-	-	-
	Service/Staff Vehicles	-	-	-
	Transit Center	-	-	-
	Transit Shelters	-	19,680	19,680
	Transit Buses	-	-	-
	Vanpool Vans	-	156,502	156,502
	Subtotal Capital Obligations	-	4,716,182	4,716,182
	Ending Cash Balance 12/31	\$ 11,242,037	\$ 237,900	\$ 8,002,114

Appendix A - Public Participation Process

Public Comment Period: July 9, 2014 to August 11, 2014. Submit comments to:

cchase@skagittransit.org

Skagit Transit
c/o Planner
600 County Shop Ln
Burlington, WA 98233

Public hearing: August 20, 2014 at 1:00 PM, Burlington City Hall Council Chambers, 833 South Spruce Street, Burlington, WA 98233

Posted to Website: July 9, 2014, <http://www.skagittransit.org/news/>

Public Notices Published: Skagit Valley Herald (no later than July 11, 2014) and El Mundo (no later than July 17, 2014)

Requests for Paper or Digital Copies: On or after July 9, 2014, anyone may request a paper or digital copy of the TDP by emailing cchase@skagittransit.org or calling 360-757-5179.

Available to the Public for Review: On or after July 9, 2014, the public can view a copy of the draft TDP at one of the following locations.

Skagit Station
Customer Service Counter
105 E. Kincaid Street
Mount Vernon, WA 98273

Maintenance, Operations and Administration (MOA) Office
Reception
600 County Shop Lane
Burlington, WA 98233

Appendix B – Public Transportation Management System Inventory

Public Transportation Management System							I hereby certify that all information reported in the inventories reflects true, accurate and complete information for the agency/organization listed and that project equipment purchased through a state or federal grant agreement is still being used in accordance with the terms and conditions of the grant agreement. Facilities & Maintenance Manager						
Owned Rolling Stock Inventory & Verification of Continued Use													
Agency/Organization: Skagit Transit													
Date: December 31, 2013							Signature and Title					Date	
	Year/Make/Model	Vehicle Code	Vehicle Identification Number (VIN)	Agency Vehicle Number	Actual/Life Odometer	Condition (points)	Age (years)	Remaining Useful Life (years)	Replacement Cost \$	ADA Access (yes/no)	Seating Capacity	Fuel Type	WSDOT Title (yes/no)
1.	2001/Gillig/Phantom	02	15GCB27161111139	011	459,163	60	12	0	\$300,000	Yes	35+2	D	No
2	1999/Gillig/Phantom	02	15GCB2118X110155	992	667,853	50	14	0	\$300,000	Yes	35+2	D	No
3	1999/Gillig/Phantom	02	15GCB211XX110156	993	633,773	50	14	0	\$300,000	Yes	35+2	D	No
4	2013/Dodge/Caravan	13	2C4RDGCG6DR761012	1017	7,480	80	0	4	\$24,500	No	7	G	Yes
5	2013/Dodge/Caravan	13	2C4RDGCG8DR761013	1018	4,377	80	0	4	\$24,500	No	7	G	Yes
6	2004/Ford/Aerotech 240	11	1FDXE45F93HB94615	730	193,446	50	9	0	\$90,000	Yes	9+3	D	No
7	2004/Ford/Aerotech 240	11	1FDXE45F03HB94616	731	205,303	50	9	0	\$90,000	Yes	9+3	D	No
8	2004/Ford/Aerotech 240	11	1FDXE45F93HB94617	732	192,291	50	9	0	\$90,000	Yes	9+3	D	No
9	2006/Ford Aerotech 240	11	1FDXE45P55HB24332	733	124,657	60	8	0	\$90,000	Yes	9+3	D	Yes
10	2008/Chev/StarTrans Senator	11	1GBJG316X81213892	734	104,725	70	5	0	\$68,800	Yes	10+4	D	No
11	2008/Chev/StarTrans Senator	11	1GBJG316181213263	735	102,537	70	5	0	\$68,800	Yes	10+4	D	No
12	2008/Chev/StarTrans Senator	11	1GBJG316881211137	736	116,272	70	5	0	\$68,800	Yes	10+4	D	No
13.	2008/Chev/StarTrans Senator	11	1GBJG316781221108	737	133,384	70	5	0	\$85,674	Yes	14+4	D	Yes
14.	2008/Chev/StarTrans Senator	11	1GBJG316X81210796	738	161,980	70	5	0	\$85,674	Yes	14+4	D	Yes
15.	2007/Chev/Uplander	13	1GNDV33W97D207677	816	103,049	60	6	0	\$22,000	No	7	G	Yes
16.	2007/Chev/Uplander	13	1GNDV33W57D208177	817	101,788	60	6	0	\$22,000	No	7	G	Yes
17.	2007/Chev/Uplander	13	1GNDV33W27D208685	819	96,285	50	6	0	\$22,000	No	7	G	Yes
18.	2013/Toyota/Prius	28	JTDZN3EU4D3273985	932	2,446	80	0	4	\$27,550	No	4	G/E	No
19.	2014/Chev/Express 15	13	1GAZG1FG2E115545	894	7,557	80	0	4	\$27,600	No	15	G	No

Public Transportation Management System Owned Rolling Stock Inventory & Verification of Continued Use													
	Year / Make / Model	Vehicle Code	Vehicle Identification Number (VIN)	Agency Vehicle Number	Actual / Life Odometer	Condition (points)	Age (years)	Remaining Useful Life (years)	Replacement Cost \$	ADA Access (yes/no)	Seating Capacity	Fuel Type	WSDOT Title (yes/no)
20.	2008/Chev/Uplander	13	1GNDV23W58D162796	820	99,141	60	5	0	\$20,171	No	7	G	Yes
21.	2008/Chev/Uplander	13	1GNDV23W58D164760	821	77,810	60	5	0	\$20,171	No	7	G	Yes
22.	2008/Chev/Express 12	13	1GAHG35K881189604	831	100,843	60	5	0	\$22,759	No	12	G	Yes
23.	2008/Chev/Express 12	13	1GAHG35K281189677	832	98,417	60	5	0	\$22,759	No	12	G	Yes
24.	2008/Chev/Express 12	13	1GAHG35K281190733	833	110,925	60	5	0	\$22,759	No	12	G	Yes
25.	2008/Chev/Express 12	13	1GAHG35K881190123	834	81,104	60	5	0	\$22,759	No	12	G	Yes
26.	2006/Ford/Econoline Pass	13	1FBSS31L86DA78254	862	66,085	50	7	0	\$25,000	No	15	G	No
27.	2006/Ford/Econoline Pass	13	1FBSS31L76DA78259	864	104,095	50	7	0	\$25,000	No	15	G	No
28.	2006/Ford/Econoline Pass	13	1FBSS31L36DA78260	865	84,390	50	7	0	\$25,000	No	15	G	No
29.	2006/Ford/Econoline Pass	13	1FBSS31L86DA90730	870	81,299	50	7	0	\$25,000	No	15	G	No
30.	2008/Chev/Express 15	13	1GAHG39K281189494	872	115,702	60	5	0	\$25,887	No	15	G	Yes
31.	2008/Chev/Express 15	13	1GAHG39K281190449	873	103,276	60	5	0	\$25,887	No	15	G	Yes
32.	2008/Chev/Express 15	13	1GAHG39K281191214	874	107,152	60	5	0	\$25,887	No	15	G	Yes
33.	2012/Dodge/Caravan	13	2C4RDGCGXCR353739	1001	24,936	80	1	3	\$25,400	No	7	G	Yes
34.	2012/Dodge/Caravan	13	2C4RDGCGXCR353742	1002	42,303	80	1	3	\$25,400	No	7	G	Yes
35.	2012/Dodge/Caravan	13	2C4RDGCG6CR353740	1003	29,008	80	1	3	\$25,400	No	7	G	No
36.	2012/Dodge/Caravan	13	2C4RDGCG8CR353741	1004	25,076	80	1	3	\$25,400	No	7	G	No
37.	2012/Dodge/Caravan	13	2C4RDGCG1CR353743	1005	31,076	80	1	3	\$25,400	No	7	G	No
38.	2014/Chev/Express 15	13	1GAZG1FG9E1115591	895	4,167	80	0	4	\$27,216	No	15	G	No
39.	2014/Chev/Express 15	13	1GAZG1FG0E1115639	896	3,649	80	0	4	\$27,216	No	15	G	No
40.	2014/Chev/Express 15	13	1GAZG1FG6E1114947	897	6,987	80	0	4	\$27,216	No	15	G	No
41.	2014/Chev/Express 15	13	1GAZG1FG0E1115267	898	3,559	80	0	4	\$27,216	No	15	G	No

Owned Rolling Stock Inventory & Verification of Continued Use													
	Year / Make / Model	Vehicle Code	Vehicle Identification Number (VIN)	Agency Vehicle Number	Actual/Life Odometer	Condition (points)	Age (years)	Remaining Useful Life (years)	Replacement Cost \$	ADA Access (yes/no)	Seating Capacity	Fuel Type	WSDOT Title (yes/no)
42.	2009/Chevy/Express 15	13	1GAHG39K791161546	875	91,348	70	2	2	\$25,751	No	15	G	No
43.	2009/Chevy/Express 15	13	1GAHG39K891160244	876	127,040	70	2	2	\$25,751	No	15	G	No
44.	2009/Chevy/Express 15	13	1GAHG39K791160381	877	91,491	70	2	2	\$25,751	No	15	G	No
45.	2009/Chevy/Express 15	13	1GAHG39K291161938	878	92,268	70	2	2	\$25,751	No	15	G	No
46.	2005/Chevy/Express 15	13	1GAHG39U451238630	880	100,466	50	8	0	\$25,000	No	15	G	No
47.	2005/Chevy/Express 15	13	1GAHG39U351238795	881	109,925	50	8	0	\$25,000	No	15	G	No
48.	2005/Chevy/Express 15	13	1GAHG39UX51236798	882	95,744	50	8	0	\$25,000	No	15	G	No
49.	2012/Chevy/Express 15	13	1GAZG1FG4C1196223	887	30,162	80	1	3	\$26,483	No	15	G	No
50.	2012/Chevy/Express 15	13	1GAZG1FGXC1196419	888	30,755	80	1	3	\$26,483	No	15	G	No
51.	2012/Chevy/Express 15	13	1GAZG1FG4C1195508	889	24,036	80	1	3	\$26,483	No	15	G	No
52.	2012/Chevy/Express 15	13	1GAZG1FG3C1195631	890	26,764	80	1	3	\$26,483	No	15	G	No
53.	2012/Chevy/Express 15	13	1GAZG1FG0C1195988	891	33,211	80	1	3	\$26,483	No	15	G	No
54.	2012/Chevy/Express 15	13	1GAZG1FG5C1197882	892	35,101	80	1	3	\$26,483	No	15	G	No
55.	2012/Chevy/Express 15	13	1GAZG1FG3C1197038	893	29,531	80	1	3	\$26,483	No	15	G	No
56.	2012/Dodge/Caravan	13	2C4RDGCG3CR353744	1006	30,200	80	1	3	\$25,400	No	7	G	No
57.	2012/Dodge/Caravan	13	2C4RDGCG5CR353745	1007	29,459	80	1	3	\$25,400	No	7	G	No
58.	2012/Dodge/Caravan	13	2C4RDGCG7CR353746	1008	38,434	80	1	3	\$25,400	No	7	G	No
59.	2012/Dodge/Caravan	13	2C4RDGCG9CR353747	1009	43,568	80	1	3	\$25,400	No	7	G	No
60.	2014/Chev/Express 15	13	1GAZG1FGXE1115082	899	3,022	90	0	4	\$27,216	No	15	G	No
61.	2014/Chev/Express 15	13	1GAZG1FG6E1115385	401	825	90	0	4	\$27,216	No	15	G	No
62.	2014/Chev/Express 15	13	1GAZG1FG4E1116664	402	1,441	90	0	4	\$27,216	No	15	G	No

Public Transportation Management System Owned Rolling Stock Inventory & Verification of Continued Use													
	Year/Make/Model	Vehicle Code	Vehicle Identification Number (VIN)	Agency Vehicle Number	Actual/Life Odometer	Condition (points)	Age (years)	Remaining Useful Life (years)	Replacement Cost \$	ADA Access (yes/no)	Seating Capacity	Fuel Type	WSDOT Title (yes/no)
63.	2012/Dodge/Caravan	13	2C4RDGCG0CR353748	1010	27,894	80	1	3	\$25,400	No	7	G	No
64.	2010/Chev/StarTrans/Senator	11	1GB9G5A61A1122062	745	102,144	70	3	2	\$114,889	Yes	10+3	D	Yes
65.	2010/Chev/Impala	28	2G1WA5EK3A1205387	924	24,834	70	3	1	\$17,305	No	5	G	No
66.	2012/Dodge/Caravan	13	2C4RDGCG2CR353749	1011	32,299	80	1	3	\$25,400	No	7	G	No
67.	2012/Dodge/Caravan	13	2C4RDGCG9CR353750	1012	46,139	80	1	3	\$25,400	No	7	G	No
68.	2012/Dodge/Caravan	13	2C4RDGCG0CR353751	1013	39,001	80	1	3	\$25,400	No	7	G	No
69.	2012/Dodge/Caravan	13	2C4RDGCG2CR353752	1014	48,265	80	1	3	\$25,400	No	7	G	No
70.	2012/Dodge/Caravan	13	2C4RDGCG4CR353753	1015	15,500	80	1	3	\$25,400	No	7	G	No
71.	2007/Gillig/Phantom	01	15GCD271071112855	071	330,509	60	6	6	\$350,000	Yes	43+2	D	No
72.	2007/Gillig/Phantom	01	15GCD271271112856	072	343,736	60	6	6	\$350,000	Yes	43+2	D	No
73.	2007/Gillig/Phantom	01	15GCD271271112857	073	317,132	60	6	6	\$350,000	Yes	43+2	D	No
74.	2007/Gillig/Phantom	01	15GCD271271112858	074	318,814	60	6	6	\$350,000	Yes	43+2	D	Yes
75.	2007/Gillig/Phantom	01	15GCD271271112859	075	309,762	60	6	6	\$350,000	Yes	43+2	D	Yes
76.	2009/Nabi/31LFW-01	03	IN93136669A140004	091	199,049	70	4	6	\$307,518	Yes	25+2	D	No
77.	2009/Nabi/31LFW-01	03	IN93136689A140005	092	181,065	70	4	6	\$307,518	Yes	25+2	D	Yes
78.	2009/Nabi/31LFW-01	03	IN931366X9A140006	093	188,876	70	4	6	\$307,518	Yes	25+2	D	No
79.	2009/Nabi/31LFW-01	03	IN93136619A140007	094	194,234	70	4	6	\$307,518	Yes	25+2	D	No
80.	2009/Nabi/31LFW-01	03	IN93136639A140008	095	196,446	70	4	6	\$307,518	Yes	25+2	D	No
81.	2009/Nabi/31LFW-01	03	IN93136659A140009	096	176,232	70	4	6	\$307,518	Yes	25+2	D	No
82.	1995/Gillig/Phantom	01	15GCD2118S1086149	097	1,125,970(EST)	50	18	0	\$350,000	Yes	43+2	D	No
83.	2014/Chev/Express 15	13	1GAZG1FG4E1116390	403	1,283	90	0	4	\$27,216	No	15	G	No
84.	2014/Chev/Express 15	13	1GAZG1FG4E1115913	404	218	90	0	4	\$27,216	No	15	G	No

Public Transportation Management System Owned Rolling Stock Inventory & Verification of Continued Use													
	Year / Make / Model	Vehicle Code	Vehicle Identification Number (VIN)	Agency Vehicle Number	Actual / Life Odometer	Condition (points)	Age (years)	Remaining Useful Life (years)	Replacement Cost \$	ADA Access (yes/no)	Seating Capacity	Fuel Type	WSDOT Title (yes/no)
85.	1996/Gillig/Phantom	01	15GCD2112T1087119	098	1,228,756(EST)	50	17	0	\$350,000	Yes	43+2	D	No
86.	2013/Chev/StarTrans/Senator	11	1GB6G5BL0C1201345	751	5,110	90	0	5	\$117,000	Yes	19+2	D	No
87.	2014/Chev/StarTrans/Senator	11	1GB6G5BL7C1200578	752	4,523	90	0	5	\$117,000	Yes	19+2	D	No
88.	2013/Chev/StarTrans/Senator	11	1GB6G5BL8C1200900	753	2,932	90	0	5	\$119,300	Yes	14+2	D	No
89.	2012/Dodge/Caravan	13	2C4RDGCG6CR353754	1016	24,098	80	1	3	\$25,400	No	7	G	No
90.	2004/Toyota/Prius Hybrid	28	JTDKB20U340039883	915	61,159	60	9	0	\$25,000	No	5	G/E	No
91.	2004/Ford/F450XL PU	28	1FDXF46P94EC48891	916	35,761	60	9	0	\$28,000	No	3	D	No
92.	2005/TaurusSE Sedan	28	1FAHP53205A312321	917	85,565	69	8	0	\$15,000	No	5	G	No
93.	2005/TaurusSE Sedan	28	1FAHP53225A312322	918	50,527	60	8	0	\$15,000	No	5	G	No
94.	2008/Ford/F250 SD PU	28	1FTSX21R18EA62941	920	84,126	60	5	0	\$35,000	No	4	D	No
95.	2009/Chevy/Colorado	28	1GCCS14E398145793	921	35,599	70	4	0	\$14,615	No	3	G	No
96.	2009/Ford/Escape	28	1FMCU927X9KB86367	922	41,878	70	4	0	\$17,602	No	5	G	No
97.	2009/Ford/Escape	28	1FMCU92719KB86368	923	49,315	70	4	0	\$17,602	No	5	G	No
98.	2010/Chev/ARBOC	04	1GBKG316291134691	101	203,250	60	3	7	\$142,747	Yes	17+2	D	No
99.	2010/Chev/ARBOC	04	1GBKG316391135364	102	204,678	60	3	7	\$142,747	Yes	17+2	D	No
100.	2010/Chev/ARBOC	04	1GBKG316791134847	103	194,888	60	3	7	\$142,747	Yes	17+2	D	No
101.	2010/Chev/StarTrans/Senator	11	1GB9G5A60A1122294	739	86,355	70	3	2	\$114,889	Yes	10+3	D	No
102.	2010/Chev/StarTrans/Senator	11	1GB9G5A67A1122213	740	132,868	70	3	2	\$114,889	Yes	10+3	D	No

Public Transportation Management System Owned Rolling Stock Inventory & Verification of Continued Use													
	Year/ Make/ Model	Vehicle Code	Vehicle Identification Number (VIN)	Agency Vehicle Number	Actual/Life Odometer	Condition (points)	Age (years)	Remaining Useful Life (years)	Replacement Cost \$	ADA Access (yes/no)	Seating Capacity	Fuel Type	WSDOT Title (yes/no)
103.	2010/Chev/StarTrans/Senator	11	1GB9G5A62A1121857	741	105,791	70	3	2	\$114,889	Yes	10+3	D	No
104.	2010/Chev/StarTrans/Senator	11	1GB9G5A65A1121755	742	79,119	70	3	2	\$96,206	Yes	10+3	D	No
105.	2010/Chev/StarTrans/Senator	11	1GB9G5A65A1121786	743	107,148	70	3	2	\$96,206	Yes	10+3	D	No
106.	2010/Chev/StarTrans/Senator	11	1GB9G5A69A1121158	744	83,787	70	3	2	\$96,206	Yes	10+3	D	No
107.	2005/Dodge/Caravan	28	2D8GP44L85R184043	925	155,803	60	8	0	\$22,000	No	7	G	No
108.	2011/Gillig/Low Floor	02	15GGB2715B1178544	111	93,781	80	2	10	\$350,000	Yes	32+2	D	Yes
109.	2011/Dodge/Caravan	13	2D4RN4DG2BR647082	822	48,577	80	2	2	\$22,000	No	7	G	Yes
110.	2011/Dodge/Caravan	13	2D4RN4DG4BR647083	823	73,119	80	2	2	\$22,000	No	7	G	Yes
111.	2011/Dodge/Caravan	13	2D4RN4DG6BR647084	824	51,374	80	2	2	\$22,000	No	7	G	Yes
112.	2011/Dodge/Caravan	13	2D4RN4DG8BR647085	825	56,299	80	2	2	\$22,000	No	7	G	Yes
113.	2011/Dodge/Caravan	13	2D4RN4DGXBR647086	826	42,671	80	2	2	\$22,000	No	7	G	Yes
114.	2011/Ford/Econoline Pass	13	1FBSS3BL3BDA48197	883	77,722	80	2	2	\$26,000	No	15	G	Yes
115.	2011/Ford/Econoline Pass	13	1FBSS3BL5BDA48198	884	62,286	80	2	2	\$26,000	No	15	G	Yes
116.	2011/Ford/Econoline Pass	13	1FBSS3BL7BDA48199	885	55,117	80	2	2	\$26,000	No	15	G	Yes
117.	2011/Ford/Econoline Pass	13	1FBSS3BLXBDA48200	886	50,279	80	2	2	\$26,000	No	15	G	Yes
118.	2012/Chev/StarTrans/Senator	11	1GB6G5BL3C1124566	746	87,052	80	1	4	\$130,000	Yes	19+2	D	No
119.	2012/Chev/StarTrans/Senator	11	1GB6G5BL7C1124909	747	54,011	80	1	4	\$130,000	No	19+2	D	No

Public Transportation Management System Owned Rolling Stock Inventory & Verification of Continued Use													
	Year / Make / Model	Vehicle Code	Vehicle Identification Number (VIN)	Agency Vehicle Number	Actual / Life Odometer	Condition (points)	Age (years)	Remaining Useful Life (years)	Replacement Cost \$	ADA Access (yes/no)	Seating Capacity	Fuel Type	WSDOT Title (yes/no)
120.	2012/Chev/StarTrans/Senator	11	1GB6G5B36C1124772	748	37,801	80	1	4	\$101,600	No	10+3	D	No
121.	2012/Chev/StarTrans/Senator	11	1GB6G5BL9C1125737	749	32,171	80	1	4	\$101,600	No	10+3	D	No
122.	2012/Chev/StarTrans/Senator	11	1GB6G5BL8C1125633	750	37,294	80	1	4	\$101,600	No	10+3	D	No
123.	2012/Chev/Express 12	13	1GAZGYFAXC1194979	835	23,465	80	1	3	\$24,500	No	12	G	No
124.	2004/Gillig/Low Floor	03	15GGE291X41090659	121	361,924	50	9	1	\$300,000	Yes	32+2	D	No
125.	2004/Gillig/Low Floor	03	15GGE291641090660	122	362,603	50	9	1	\$300,000	Yes	32+2	D	No
126.	2004/Gillig/Low Floor	03	15GGE291841090661	123	365,764	50	9	1	\$300,000	Yes	32+2	D	No
127.	2012/Ford/F-550	28	1FD0X5HT9CEC05827	926	28,091	80	1	4	\$58,500	No	4	D	No
128.	2006/Dodge/Caravan	28	2D8GP44L26R868328	927	121,589	50	7	0	\$20,013	No	7	G	No
129.	2006/Dodge/Caravan	28	2D8GP44LX6R835447	928	124,565	50	7	0	\$20,013	No	7	G	No
130.	2006/Dodge/Caravan	28	2D8GP44L86R835446	929	121,495	50	7	0	\$20,013	No	7	G	No
131.	2006/Dodge/Caravan	28	2D8GP44L66R835445	930	144,179	50	7	0	\$20,013	No	7	G	No
132.	2005/Dodge/Caravan	28	2D8GP44L65R184042	931	131,032	50	8	0	\$20,943	No	7	G	No
133.	2014/Chev/StarTrans/Senator	11	1GB6G5BL0C1200194	754	2,535	90	0	5	\$107,300	Yes	10+3	D	No
134.	2013/Chev/StarTrans/Senator	11	1GB6G5BLXC1200736	755	2,336	90	0	5	\$107,300	Yes	10+3	D	No
135.	2013/Chev/StarTrans/Senator	11	1GB6G5BL2C1201153	756	2,328	90	0	5	\$107,300	Yes	10+3	D	No
136.	2013/Chev/StarTrans/Senator	11	1GB6G5BLXC1171643	757	2,332	90	0	5	\$107,300	Yes	10+3	D	No
137.	2013/Chev/StarTrans/Senator	11	1GB6G5BL6C1200281	758	2,357	90	0	5	\$107,300	Yes	10+3	D	No

Public Transportation Management System					<i>I hereby certify that all information reported in the inventories reflects true, accurate and complete information for the agency/organization listed and that project equipment purchased through a state or federal grant agreement is still being used in accordance with the terms and conditions of the grant agreement.</i>		
Owned Facility Inventory							
Skagit Transit							
Date: December 31, 2013							
					Facilities & Maintenance Manager		
					Signature and Title		
					Date		
	Facility Code	Facility Name	Condition (points)	Age (years)	Remaining Useful Life (years)	Replacement Cost (\$)	Comments <i>(If more than two lines, please attach a separate comment page)</i>
1.	23	Maintenance/Operations/Administration Base	80	13	17	\$2,400,000	Land is leased from Skagit County
2.	06	Skagit Station Multi-Modal Transfer Center	90	8	32	\$2,095,000	100 Stall Park & Ride
3.	9	South Mount Vernon	100	3	37	\$3,810,000	382 Stall Park & Ride
4.	9	Chuckanut Park and Ride	100	2	38	\$1,878,000	368 Stall Park & Ride Property State Owned
5.	9	Alger Park and Ride	100			2014 Open	50 Stall Park & Ride still under construction

Public Transportation Management System Owned Equipment Inventory				<i>I hereby certify that all information reported in the inventories reflects true, accurate and complete information for the agency/organization listed and that project equipment purchased through a state or federal grant agreement is still being used in accordance with the terms and conditions of the grant agreement.</i>		
Agency/Organization:		Skagit Transit		Facilities & Maintenance Manager		
Date:		December 31, 2013		<i>Signature and Title</i> <i>Date</i>		
	Equipment Code and Description	Condition (points)	Age (years)	Remaining Useful Life (years)	Replacement Cost (\$)	Comments <i>(If more than two lines, please attach a separate comment page)</i>
1.	No Equipment with a value of \$100,000 or greater					