



TRANSIT DEVELOPMENT PLAN 2014 – 2019

&

2013 ANNUAL REPORT

Date of Public Hearing: July 10th, 2014

PACIFIC TRANSIT SYSTEM

Transit Development Plan 2014 – 2019 and 2013 Annual Report

Date of Public Hearing: July 10th, 2014

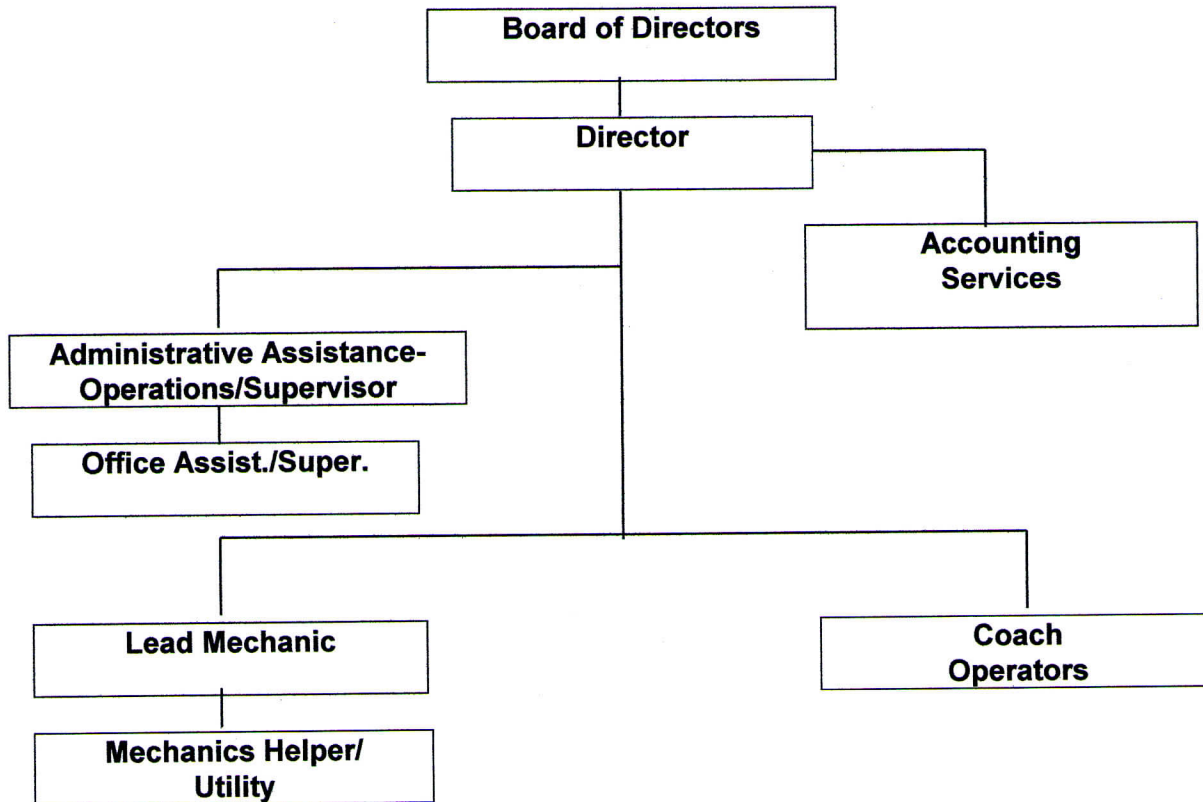
Table of Contents

Section	Title	Page
I	Organization	3
II	Physical Plant	4
III	Service Characteristics	4
IV	Service Connections	5
V	Activities in 2013	5-6
VI	Proposed Action Strategies, 2014 - 2019	6
VII	Proposed Changes, 2014 - 2019	7
VIII	Capital Improvement Program, 2014 - 2019	8
IX	Operating Data, 2013 - 2019	9
X	Operating Revenues and Expenditures, 2013 - 2019	10-16
Appendix A	Equipment, Rolling Stock and Facilities	17-21
Appendix B	Systems Map	22-23

Section I: Organization

Pacific Transit System is a Public Transportation Benefit Area, authorized in Chapter 36.57A RCW, located in Pacific County, Washington. Pacific Transit System began providing public transportation services in January 1980. Our system map appears in the Appendix, showing the extent of our service area. Our eight-member Board of Directors consists of three Pacific County Commissioners, four mayors, one each from the following communities of Raymond, South Bend, Ilwaco, and Long Beach, plus a non-voting labor representative. The Board of Directors hold public Board meetings the second Thursday in the months of January, April, July, and October. The meetings alternate between the Pacific Transit Administrative offices in Raymond, Washington and the Pacific Transit Maintenance Facility in Seaview, Washington.

Below is the table of organization for Pacific Transit System.
(As of June 30, 2014)



As of December 31, 2013, Pacific Transit System employed:

- 9.9 Full-time equivalents in the Operations Division (3.9 in DAR; 6 in Fixed Route)
- 2.0 Full-time equivalents in the Maintenance Division
- 3.5 Full-time equivalents in the Administration Division

Section II: Physical Plant

Pacific Transit System has Administrative Offices and an Operation Facility located at 216 N. Second Street, Raymond, Washington 98577. In addition Pacific Transit System has a Maintenance and Operations Facility located at 2750 Pacific Way, Seaview, Washington, 98644.

The Appendix contains the completed form for the State's public transportation management system for our owned revenue vehicles and facilities.

Section III: Service Characteristics

In 2013, Pacific Transit System provided fixed route and Dial-A-Ride accessible services. Pacific Transit System's map in the Appendix shows where fixed routes operate.

Pacific Transit System operates 5 fixed routes, Mondays through Fridays, 6:00 am - 7:30 pm, and two fixed routes on Saturdays, 10:00 am - 6 pm. The headway on all routes varied as displayed on our system map in the Appendix. Our Dial-A-Ride accessible services are available at the same times as our fixed route services.

Our fare structure, per boarding, is:

Fixed routes(#14, 24, or 50), age 5 years and above:	\$0.50
Fixed routes(#20 or 32), age 5 years and above:	\$0.35
Dial-A-Ride, 5 years and above including ADA:	\$0.35

Children 4 and under ride free when accompanied by an adult.

Our charges for passes are:

- \$7.00 for 20 \$0.35 rides, good on routes #20, 32 & DAR, age 5 years and up.
- \$10.00 for 20 \$0.50 rides, good on routes #14, 24, & 50, age 5 years and up.
- \$20.00 unlimited monthly pass, good on all routes including DAR, 5-60 years.
- \$10.00 unlimited Student monthly pass, good on all routes, for all students.
- \$10.00 unlimited Reduced monthly pass, good on all routes, for seniors age 60 and older or for the disabled.
- \$1.50 Daily transfer, good on all routes, for one day only. No age limit.

In addition we have special fare free services for the following:

- Willapa Harbor Festival-Raymond
- Camp Victory-Ocean Park
- Timberland Regional Library Reading Program-whole county
- Finnish Folk Festival-Naselle (every other year)
- Ride Free Week-December

Section IV: Service Connections

Pacific Transit System provides services to the following public transportation facilities:

Grays Harbor Transit Transfer Facility in Aberdeen, Washington for further connections to Olympia, Washington and to Greyhound and Amtrak.

Sunset Transportation Services and Northwest Point Coachways in Astoria, Oregon for further connections to Portland, Oregon and to Greyhound, Amtrak and the Portland airport.

Wahkiakum on the Move in Naselle, Washington for further connections to Longview and Chehalis Washington; and Portland, Oregon.

Section V: Activities in 2013

We had little or no changes in our service area and/or schedules.

In 2013 we addressed the Washington State Department of Transportation's transportation system policy goals through the following:

PRESERVATION: To maintain, preserve, and extend the life and utility of prior investments in transportation systems and services

We continued to maintain and preserve our equipment and facilities.

SAFETY: To provide for and improve the safety and security of transportation customers and the transportation system.

We had one reportable accident in 2013.

MOBILITY: To improve the predictable movement of goods and people throughout Washington State.

We continue to work with the community, other agencies, and other providers in our area to provide an efficient and predictable service.

ENVIRONMENT: To enhance Washington's quality of life through transportation investments that promote energy conservation, enhance healthy communities, and protect the environment.

We continually strive to protect the environment and practice energy conservation.

STEWARDSHIP: To continuously improve the quality, effectiveness, and efficiency of the transportation system.

We constantly monitor our service for our citizens and continue to have one of the lowest costs per hour in the state.

Section VI: Proposed Action Strategies for 2014 - 2019

The proposed changes in Section VI, below, are based on the Washington Transportation Plan's policy goals;

Preservation:

Over the next 6 years we intend to replace two (2) Dial-A-Ride vans, two (2) 30' buses, and two (2) mid-size buses.

Safety:

Our safety record over the past several years has been one of the best in the WSTIP (Washington State Transit Insurance Pool) membership.

Mobility:

We continue to operate our fixed routes and Dial-A-Ride services with one of the lowest costs per hour of operation. In addition, the citizens of Pacific County seem to be satisfied with the level of service we provide.

Environment:

We continue to protect our environment and practice energy conservation with the resources we have available in our community.

Stewardship:

We continue to monitor our citizens through citizen feedback and provide training to our operators to improve our transit agency.

Section VII: Proposed Changes, 2014 - 2019

<u>2014</u>	<u>Preservation</u>	<u>Improvement</u>
Services:	No change.	No change.
Facilities:	No change.	No change.
Equipment:	No change.	No change.
<u>2015</u>		
Services:	No change.	No change.
Facilities:	No change.	No change.
Equipment:	Replace (1) – DAR Van. Replace (2) – 30' Bus	No change.
<u>2016</u>		
Services:	No change.	No change.
Facilities:	No change.	No change.
Equipment:	No change	No change.
<u>2017</u>		
Services:	No change.	No change.
Facilities:	No change.	No change.
Equipment:	Replace (1) – DAR Van. Replace (2) – Mid-size Buses	No change.
<u>2018</u>		
Services:	No change.	No change.
Facilities:	No change.	No change.
Equipment:	No change.	No change.
<u>2019</u>		
Services:	No change.	No change.
Facilities:	No change.	No change.
Equipment:	No change.	No change.

Section VIII: Capital Improvement Program, 2014 - 2019
 (All figures in thousands of dollars)

<u>Preservation</u>	<u>2014</u>	<u>2015</u>	<u>2016</u>	<u>2017</u>	<u>2018</u>	<u>2019</u>
Maintenance equipment	\$0	\$0	\$0	\$0	\$0	\$0
Dial a ride vehicles	\$0	\$70	\$0	\$75	\$0	\$0
Transit Center	\$0	\$0	\$0	\$0	\$0	\$0
Transit shelters	\$0	\$0	\$0	\$0	\$0	\$0
Transit buses	<u>\$0</u>	<u>\$760</u>	<u>\$0</u>	<u>\$400</u>	<u>\$0</u>	<u>\$0</u>
Totals	\$0	\$830	\$0	\$475	\$0	\$0

<u>Improvement</u>	<u>2014</u>	<u>2015</u>	<u>2016</u>	<u>2017</u>	<u>2018</u>	<u>2019</u>
Maintenance equipment	\$0	\$0	\$0	\$0	\$0	\$0
Dial a ride vehicles	\$0	\$0	\$0	\$0	\$0	\$0
Transit Center	\$0	\$0	\$0	\$0	\$0	\$0
Transit shelters	\$0	\$0	\$0	\$0	\$0	\$0
Transit buses	<u>\$0</u>	<u>\$0</u>	<u>\$0</u>	<u>\$0</u>	<u>\$0</u>	<u>\$0</u>
Totals	\$0	\$0	\$0	\$0	\$0	\$0

<u>Combined</u>	<u>2014</u>	<u>2015</u>	<u>2016</u>	<u>2017</u>	<u>2018</u>	<u>2019</u>
Maintenance equipment	\$0	\$0	\$0	\$0	\$0	\$0
Dial a ride vehicles	\$0	\$70	\$0	\$75	\$0	\$0
Transit Center	\$0	\$0	\$0	\$0	\$0	\$0
Transit shelters	\$0	\$0	\$0	\$0	\$0	\$0
Transit buses	<u>\$0</u>	<u>\$760</u>	<u>\$0</u>	<u>\$400</u>	<u>\$0</u>	<u>\$0</u>
Totals	\$0	\$830	\$0	\$475	\$0	\$0

Section IX: Operating Data 2013 - 2019

(All Figures, except 2013, in thousands of units)

<u>Fixed Routes Services</u>	<u>2013</u>	<u>2014</u>	<u>2015</u>	<u>2016</u>	<u>2017</u>	<u>2018</u>	<u>2019</u>
Vehicle hours	12,919	13.0	13.0	13.0	13.0	13.0	13.0
Vehicle revenue hours	12,520	12.5	12.5	12.5	12.5	12.5	12.5
Vehicle miles	332,451	335	335	335	335	335	335
Vehicle revenue miles	321,481	325	325	325	325	325	325
Passenger trips	115,286	115	115	115	115	115	115
Fatalities	0						
Reportable injuries	1						
Collisions	1						
Diesel fuel consumed (gal)	44,062						
<u>Dial a Ride Services</u>	<u>2013</u>	<u>2014</u>	<u>2015</u>	<u>2016</u>	<u>2017</u>	<u>2018</u>	<u>2019</u>
Vehicle hours	8,096	8.0	8.0	8.0	8.5	8.5	8.5
Vehicle revenue hours	7,206	7.0	7.0	7.0	8.0	8.0	8.0
Vehicle miles	100,071	100	100	100	105	105	105
Vehicle revenue miles	89,064	90	90	90	93	93	93
Passenger trips	11,680	12.5	12.5	12.5	13	13	13
Fatalities	0						
Reportable injuries	0						
Collisions	0						
Gasoline fuel consumed (gal)	10,409						
Diesel fuel consumed (gal)	0						

Section X: Operating Revenues and Expenditures, 2013 - 2019

(All figures, except 2013, in thousands of dollars)

2013

	GENERAL FUND	CAPITAL FUND	TOTAL
Beginning Balance	\$68,661	\$1,438,266	\$1,506,927
Revenues			
Sales Tax	753,351	- 0-	753,351
Farebox	41,036	-0-	41,036
Sales Tax Equilization	59,094	-0-	59,094
Federal Operating Grants	465,684	-0-	465,684
State Operating Grants	149,952	-0-	149,952
Other	2,496	-0-	2,496
Contribution To Accounts	-0-	12,000	12,000
Total Available	\$1,540,274	\$1,450,266	\$2,990,540
Operating Expenses			
Vanpool P & M	\$ - 0-	\$ -0-	\$ -0-
Vanpool Sys Expand	-0-	-0-	-0-
Fixed Route P & M	908,888	-0-	908,888
Fixed Route Sys Expand	-0-	-0-	-0-
Route Deviation P & M	-0-	-0-	-0-
Route Deviation Sys Expand	-0-	-0-	-0-
Paratransit ADA P & M	568,978	-0-	568,978
Paratransit ADA Sys Expand	-0-	-0-	-0-
Annual Depreciation	303,854	-0-	303,854
Contribution to Accounts	12,000	-0-	12,000
Total Expenses	\$1,793,720	\$ -0-	\$1,793,720
Add Back Depreciation	303,854	-0-	303,854
Net Cash Available	\$50,408	\$1,450,266	\$1,500,674
Capital Revenue			
Fed 5311 Grant	\$ -0-	\$ -0-	\$ -0-
Fed 5309 Grant	-0-	-0-	-0-
ARRA Funds	-0-	-0-	-0-
Total Capital Revenue	\$ -0-	\$ -0-	\$ -0-
Capital Obligations			
Capital System P&M:	-0-	-0-	-0-
Total Capital Obligations	\$ -0-	\$ -0-	\$ -0-
Ending Cash Balance 12/31	\$50,408	\$1,450,266	\$1,500,674

2014

	GENERAL FUND	CAPITAL FUND	TOTAL
Beginning Balance	\$ 50	\$1,451	\$ 1,501
Revenues			
Sales Tax	745	- 0-	745
Farebox	41	-0-	41
Sales Tax Equilization	60	-0-	60
Federal Operating Grants	475	-0-	475
State Operating Grants	153	-0-	153
Other	2	-0-	2
Contribution To Accounts	-0-	-0-	-0-
Total Available	\$ 1,526	\$ 1,451	\$ 2,977
Operating Expenses			
Vanpool P & M	\$- 0-	\$-0-	\$-0-
Vanpool Sys Expand	-0-	-0-	-0-
Fixed Route P & M	927	-0-	927
Fixed Route Sys Expand	-0-	-0-	-0-
Route Deviation P & M	-0-	-0-	-0-
Route Deviation Sys Expand	-0-	-0-	-0-
Paratransit ADA P & M	580	-0-	580
Paratransit ADA Sys Expand	-0-	-0-	-0-
Annual Depreciation	278	-0-	278
Contribution to Accounts	-0-	-0-	-0-
Total Expenses	\$ 1,785	\$ -0-	\$ 1,785
Add Back Depreciation	278	-0-	278
Net Cash Available	\$ 19	\$ 1,451	\$ 1,470
Capital Revenue			
Fed 5309 Grant	\$ -0-	\$ -0-	\$ -0-
Total Capital Revenue	\$ -0-	\$ -0-	\$ -0-
Capital Obligations			
Capital System P&M:	\$ -0-	\$ -0-	\$ -0-
Total Capital Obligations	\$ -0-	\$ -0-	\$ -0-
Ending Cash Balance 12/31	\$ 19	\$ 1,451	\$ 1,470

Sales tax are less because of three bridge replacements in 2013 and early part of 2014 in Pacific County.

Most State and Federal revenues raised 2-3%.

2015

	GENERAL FUND	CAPITAL FUND	TOTAL
Beginning Balance	\$ 19	\$ 1,451	\$ 1,470
Revenues			
Sales Tax	755	- 0-	755
Farebox	42	-0-	42
Sales Tax Equilization	61	-0-	61
Federal Operating Grants	494	-0-	494
State Operating Grants	159	-0-	159
Other	2	-0-	2
Contribution To Accounts	55	(55)	-0-
Total Available	\$ 1,587	\$ 1,396	\$ 2,983
Operating Expenses			
Vanpool P & M	\$- 0-	\$-0-	\$-0-
Vanpool Sys Expand	-0-	-0-	-0-
Fixed Route P & M	945	-0-	945
Fixed Route Sys Expand	-0-	-0-	-0-
Route Deviation P & M	-0-	-0-	-0-
Route Deviation Sys Expand	-0-	-0-	-0-
Paratransit ADA P & M	592	-0-	592
Paratransit ADA Sys Expand	-0-	-0-	-0-
Annual Depreciation	252	-0-	252
Contribution to Accounts	-0-	-0-	-0-
Total Expenses	\$ 1,789	\$ -0-	\$ 1,789
Add Back Depreciation	252	-0-	252
Net Cash Available	\$ 50	\$ 1,396	\$ 1,446
Capital Revenue			
Federal 5309 Grant	\$ -0-	\$ 664	\$ 664
Total Capital Revenue	\$ -0-	\$ 664	\$ 664
Capital Obligations			
Capital System P&M:			
Replace (2) 30' Buses		\$ 760	\$ 760
Replace (1) DAR Van		70	70
Total Capital Obligations	\$ -0-	\$ 830	\$ 830
Ending Cash Balance 12/31	\$ 50	\$ 1,230	\$ 1,280

State and Federal revenues
raised 4%.

	2016		
	GENERAL FUND	CAPITAL FUND	TOTAL
Beginning Balance	\$ 50	\$ 1,230	\$ 1,280
Revenues			
Sales Tax	755	- 0-	755
Farebox	42	-0-	42
Sales Tax Equilization	62	-0-	62
Federal Operating Grants	518	-0-	518
State Operating Grants	167	-0-	167
Other	2	-0-	2
Contribution To Accounts	18	(18)	-0-
Total Available	\$ 1,614	\$ 1,212	\$ 2,826
Operating Expenses			
Vanpool P & M	\$- 0-	\$-0-	\$-0-
Vanpool Sys Expand	-0-	-0-	-0-
Fixed Route P & M	964	-0-	964
Fixed Route Sys Expand	-0-	-0-	-0-
Route Deviation P & M	-0-	-0-	-0-
Route Deviation Sys Expand	-0-	-0-	-0-
Paratransit ADA P & M	604	-0-	604
Paratransit ADA Sys Expand	-0-	-0-	-0-
Annual Depreciation	226	-0-	226
Contribution to Accounts	-0-	-0-	-0-
Total Expenses	\$ 1,794	\$ -0-	\$ 1,794
Add Back Depreciation	226	-0-	226
Net Cash Available	\$ 46	\$ 1,212	\$ 1,258
Capital Revenue			
Fed 5309 Grant	\$ -0-	\$ -0-	\$ -0-
Total Capital Revenue	\$ -0-	\$ -0-	\$ -0-
Capital Obligations			
	-0-	-0-	-0-
Total Capital Obligations	\$ -0-	\$ -0-	\$ -0-0
Ending Cash Balance 12/31	\$ 46	\$ 1,212	\$ 1,258

State and federal revenues increased by 5%.

2017

	GENERAL FUND	CAPITAL FUND	TOTAL
Beginning Balance	\$ 46	\$ 1,212	\$ 1,258
Revenues			
Sales Tax	755	- 0-	755
Farebox	42	-0-	42
Sales Tax Equilization	63	-0-	63
Federal Operating Grants	570	-0-	570
State Operating Grants	184	-0-	184
Other	1	-0-	1
Contribution To Accounts	-0-	12	12
Total Available	\$ 1,661	\$ 1,224	\$ 2,885
Operating Expenses			
Vanpool P & M	\$- 0-	\$-0-	\$-0-
Vanpool Sys Expand	-0-	-0-	-0-
Fixed Route P & M	983	-0-	983
Fixed Route Sys Expand	-0-	-0-	-0-
Route Deviation P & M	-0-	-0-	-0-
Route Deviation Sys Expand	-0-	-0-	-0-
Paratransit ADA P & M	616	-0-	616
Paratransit ADA Sys Expand	-0-	-0-	-0-
Annual Depreciation	260	-0-	260
Contribution to Accounts	12	-0-	12
Total Expenses	\$ 1,871	\$ -0-	\$ 1,871
Add Back Depreciation	260	-0-	260
Net Cash Available	\$ 50	\$ 1,224	\$ 1,274
Capital Revenue			
Federal 5309 Grant	\$ -0-	\$ 380	\$ 380
Total Capital Revenue	\$ -0-	\$ 380	\$ 380
Capital Obligations			
Capital System P&M:			
Replace (2) Mid-size Buses	\$ -0-	\$ 400	\$ 400
Replace (1) DAR Van	-0-	75	75
Total Capital Obligations	\$ -0-	\$ 475	\$ 475
Ending Cash Balance 12/31	\$ 50	\$ 1,129	\$ 1,179

State abd Federal revenues increased
by 10%.

2018

	GENERAL FUND	CAPITAL FUND	TOTAL
Beginning Balance	\$ 50	\$ 1,129	\$ 1,179
Revenues			
Sales Tax	755	- 0-	755
Farebox	42	-0-	42
Sales Tax Equilization	64	-0-	64
Federal Operating Grants	627	-0-	627
State Operating Grants	202	-0-	202
Other	1	-0-	1
Contribution To Accounts	-0-	60	60
Total Available	\$ 1,741	\$ 1,189	\$ 2,930
Operating Expenses			
Vanpool P & M	\$ - 0-	\$ -0-	\$ -0-
Vanpool Sys Expand	-0-	-0-	-0-
Fixed Route P & M	1,003	-0-	1,003
Fixed Route Sys Expand	-0-	-0-	-0-
Route Deviation P & M	-0-	-0-	-0-
Route Deviation Sys Expand	-0-	-0-	-0-
Paratransit ADA P & M	628	-0-	628
Paratransit ADA Sys Expand	-0-	-0-	-0-
Annual Depreciation	240	-0-	240
Contribution to Accounts	60	-0-	60
Total Expenses	\$ 1,931	\$ -0-	\$ 1,931
Add Back Depreciation	240	-0-	240
Net Cash Available	\$ 50	\$ 1,189	\$ 1,239
Capital Revenue			
	\$ -0-	\$ -0-	\$ -0-
Total Capital Revenue	\$ -0-	\$ -0-	\$ -0-
Capital Obligations			
Capital System P&M:			
	\$ -0-	\$ -0-	\$ -0-
Total Capital Obligations	\$ -0-	\$ -0-	\$ -0-
Ending Cash Balance 12/31	\$ 50	\$ 1,189	\$ 1,239

State and federal revenues increased by 10%.

2019

	GENERAL FUND	CAPITAL FUND	TOTAL
Beginning Balance	\$ 50	\$ 1,189	\$ 1,239
Revenues			
Sales Tax	756	- 0-	756
Farebox	42	-0-	42
Sales Tax Equilization	65	-0-	65
Federal Operating Grants	690	-0-	690
State Operating Grants	222	-0-	222
Other	1	-0-	1
Contribution To Accounts	-0-	146	146
Total Available	\$ 1,826	\$ 1,335	\$ 3,161
Operating Expenses			
Vanpool P & M	\$- 0-	\$-0-	\$-0-
Vanpool Sys Expand	-0-	-0-	-0-
Fixed Route P & M	1,002	-0-	1,002
Fixed Route Sys Expand	-0-	-0-	-0-
Route Deviation P & M	-0-	-0-	-0-
Route Deviation Sys Expand	-0-	-0-	-0-
Paratransit ADA P & M	628	-0-	628
Paratransit ADA Sys Expand	-0-	-0-	-0-
Annual Depreciation	250	-0-	250
Contribution to Accounts	146	-0-	146
Total Expenses	\$ 2,026	\$ -0-	\$ 2,026
Add Back Depreciation	250	-0-	250
Net Cash Available	\$ 50	\$ 1,335	\$ 1,385
Capital Revenue			
Federal 5309 Grant	\$ -0-	\$ -0-	\$ -0-
Total Capital Revenue	\$ -0-	\$ -0-	\$ -0-
Capital Obligations			
Capital System P&M:	\$ -0-	\$ -0-	\$ -0-
Total Capital Obligations	\$ -0-	\$ -0-	\$ -0-
Ending Cash Balance 12/31	\$ 50	\$ 1,335	\$ 1,385

State and federal reveunes increased 10%.

Lists of Equipment, Rolling Stock and Facilities

(as of June 30, 2014)

The Public Transportation Management System lists the rolling stock, equipment, and facilities owned by Pacific Transit System.

APPENDIX A

Rolling Stock Inventory

Owned Equipment Inventory

Facilities Inventory

Public Transportation Management System Owned Rolling Stock Inventory

Agency/Organization:

Pacific Transit System

Date:

30-Jun-14

I hereby certify that all information reported in this inventory reflects true, accurate and complete information for the agency/organization listed.

T. R. Dueston
Signature and Title

7/26/14
Date

Year/Make/Model	Vehicle Code	Vehicle Identification Number (VIN)	Agency Vehicle Number	Current Odometer	Condition (points)	Age (years)	Remaining Useful Life (years)	Replacement Cost \$	ADA Access (yes/no)	Seating Capacity	Fuel Type	WSDOT Title (yes/no)
1. 1998/Gillig/Phantom	3	15GCA2118W1089101	D-23	583,932	20-40	16	2	\$375,000	YES	29/23-2	D	NO
2. 2000/Gillig/Phantom	3	15GCA2119Y1110251	D-26	425,424	20-40	14	4	\$375,000	YES	29/23-2	D	NO
3. 2000/Gillig/Phantom	3	15GCA2110Y1110252	D-27	466,010	20-40	14	3	\$375,000	YES	29/23-2	D	NO
4. 2009/Eldorado/Aero Elite 320	12	1GBG5V1989F406357	D-28	231,379	50-70	5	5	\$140,000	YES	29/23-2	D	YES
5. 2011 Gillig Low Floor	4	15GGE2716B1092148	D-29	131,280	80-90	3	12	\$365,000	YES	26/20-2	D	YES
6. 2011 Gillig Low Floor	4	15GGE2718B1092149	D-30	106,971	80-90	3	12	\$365,000	YES	26/20-2	D	YES
7. 2011 Gillig Low Floor	4	15GGE2714B1092150	D-31	117,390	80-90	3	12	\$365,000	YES	26/20-2	D	YES
8. 2011 Gillig Low Floor	4	15GGE2716B1092151	D-32	125,955	80-90	3	12	\$365,000	YES	26/20-2	D	YES
9. 2011 Gillig Low Floor	4	15GGE2710B1092274	D-33	105,950	80-90	3	12	\$365,000	YES	26/20-2	D	YES
10. 2011 Gillig Low Floor	4	15GGE2712B1092275	D-34	133,341	80-90	3	12	\$365,000	YES	26/20-2	D	YES
11. 2001/Eldorado/Aerotech 240	11	1FDXE45S7YHB88798	G-1	195,963	20-40	13	1	\$65,000	YES	15-2	G	NO
12. 2004/Eldorado/Aerotech 240	11	1FDXE45S64HA69943	G-6	177,202	20-40	10	3	\$65,000	YES	14-2	G	NO
13. 2006/Eldorado/Aerotech 240	11	1FDXE45S06DA40397	G-10	186,228	80-90	8	6	\$65,000	YES	14-2	G	NO
14. 2009/Eldorado/Aerotech 240	11	1FDXE45S69DA16296	G-11	87,449	100	5	8	\$65,000	YES	14-2	G	YES
15. 2012/Eldorado/Aerotech 240	11	1GB6G5BG3C1198931	G-12	39,875	100	2	11	\$65,000	YES	14-2	G	YES
16. 2012/Eldorado/Aerotech 240	11	1GB6G5BG7C1199354	G-14	25,811	100	2	11	\$65,000	YES	14-2	G	YES

Public Transportation Management System Owned Equipment Inventory

Agency/Organization: Pacific Transit System

Date: June 30, 2014

	Equipment Code and Description	Condition (points)	Age (years)	Remaining Useful Life (years)	Replacement Cost (\$)	Comments (If more than two lines, please attach a separate comment page)
1.	None					
2.						
3.						
4.						
5.						
6.						
7.						
8.						
9.						
10.						
11.						
12.						
13.						
14.						
15.						
16.						

Public Transportation Management System Owned Facility Inventory

Agency/Organization: Pacific Transit System

Date: 30-Jun-14

Facility Code	Facility Name	Condition (points)	Age (years)	Remaining Useful Life (years)	Replacement Cost (\$)	Comments (If more than two lines, please attach a separate comment page)
1. 10	Raymond Office - 1954	40	60	8	\$334,000	
2. 20	Raymond Parking Garage - 1982	40	32	8	\$205,000	
3. 11	Seaview Maintenance Facility - 1988	70	26	16	\$837,000	
4. 21	Seaview Wash & Fuel Bay - 1988	80	26	15	\$351,000	
5. 20	Seaview Parking Area - 1990	80	24	15	\$280,000	
6. 10	Seaview Office Area - 1990	80	24	15	\$410,000	
7.						
8.						
9.						
10.						
11.						
12.						
13.						
14.						
15.						
16.						

APPENDIX B

Systems Map

