



# **2013-2019 Transit Development Plan**

Kitsap Transit

60 Washington Avenue, Suite 200, Bremerton, WA 98337

Date of Public Hearing: July 15, 2014

Pursuant to RCW 35.58.2795

# Table of Contents

<b>Section</b>	<b>Title</b>	<b>Page</b>
<b>I</b>	<b>Organization</b>	<b>1</b>
<b>II</b>	<b>Physical Plant</b>	<b>2</b>
<b>III</b>	<b>Service Characteristics</b>	<b>2</b>
<b>IV</b>	<b>Service Connections</b>	<b>5</b>
<b>V</b>	<b>Activities in 2013</b>	<b>5</b>
<b>VI</b>	<b>Proposed Action Strategies, 2014 – 2019</b>	<b>8</b>
<b>VII</b>	<b>Proposed Changes, 2013 – 2019 Capital Programs</b>	<b>12</b>
<b>VIII</b>	<b>Operating Data, 2013 – 2019</b>	<b>13</b>
<b>IX</b>	<b>Operating Revenues and Expenditures, 2013 – 2019</b>	<b>15</b>

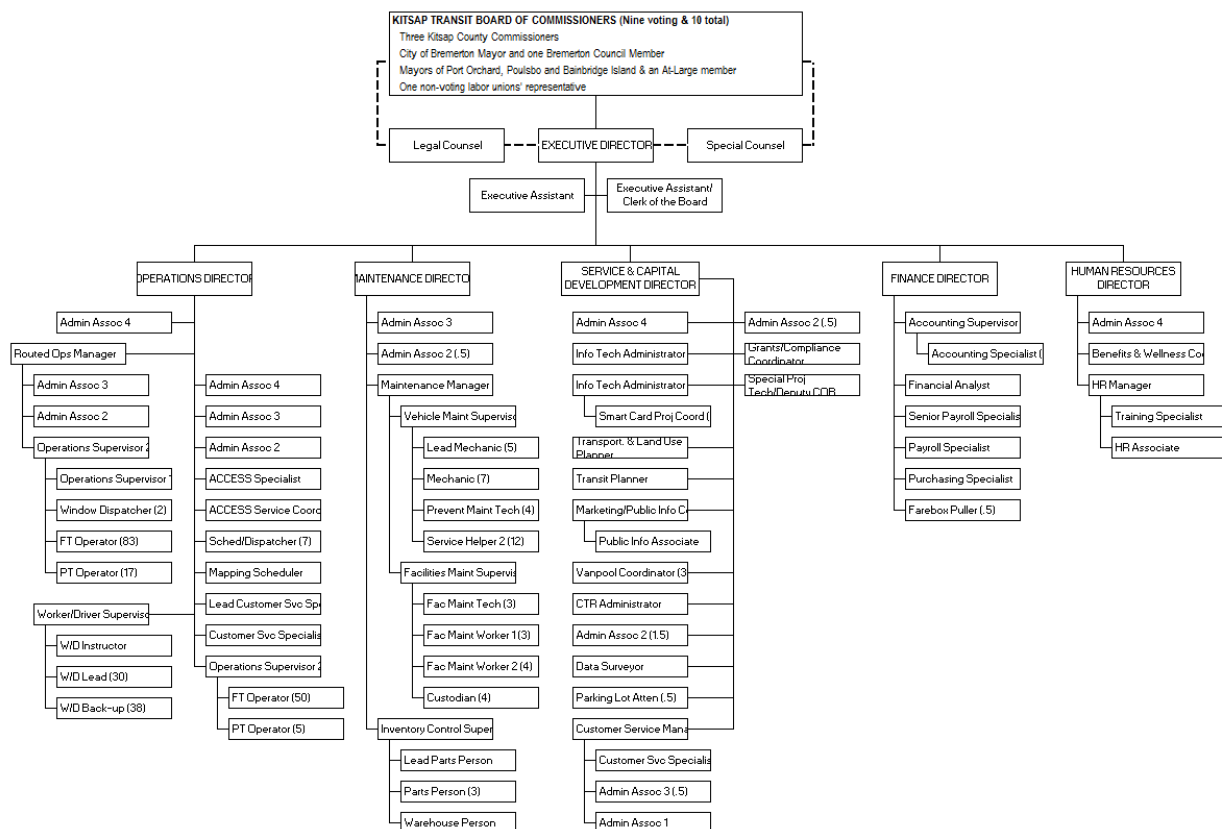
## Appendices

<b>I</b>	Service Map
<b>II</b>	Equipment and Facilities Asset Inventory
<b>III</b>	Rolling Stock Asset Inventory

## Section I: Organization

Kitsap Transit (KT) is a public transportation benefit area authority, authorized in Chapter 36.57A RCW, and located in Kitsap County, Washington. KT began providing public transportation services in early 1983. KT's system map appears in Appendix I, showing the extent of the agency's service area. Beginning in 2011, as the result of a change in state law, membership on the KT Board of Commissioners increased from nine to ten and now includes one non-voting member who represents the agency's labor unions. The nine voting members of the KT Board are the three Kitsap County commissioners; the mayors of the four incorporated cities in Kitsap County: Bainbridge Island, Bremerton, Port Orchard and Poulsbo; a member of the Bremerton City Council, appointed by the Bremerton City Council President; and one at-large member selected by the Board Chair from among interested elected officials from the four cities in the agency's service area. All board members serve for the duration of their elected term of office, with the exception of the Bremerton City Council member, who serves for a one-year term, and the at-large member, who serves for a two-year term and is selected at the last meeting in December or the first meeting in January every other year.

Below is the 2014 organizational chart for Kitsap Transit. In 2012, KT's first and only executive director since the agency formed by a vote of the people in 1982 retired, and a new executive director was hired.



In 2013, Kitsap Transit employed full-time equivalent employees in the following departments:

- 3.0 Full-time equivalents in the Executive Division
- 193.5 Full-time equivalents in the Operations Division
  - Of these:
    - 97.5 were for Routed Service
    - 73.5 were for *ACCESS* Service
    - 19.5 were for Worker/Driver Service
- 50.0 Full-time equivalents in the Vehicle and Facilities Maintenance Division
- 20.6 Full-time equivalents in the Service Development Division
- 15.1 Full-time equivalents in the Finance Division
- 6.0 Full-time equivalents in the Human Resources Division
- 2.0 Full-time equivalents in the Capital Development Division

## **Section II: Physical Plant**

KT's administrative offices are located at 60 Washington Avenue, Suite 200 in Bremerton, WA, 98337. The agency's primary maintenance and operations facility is at 200 Charleston Boulevard, Bremerton, WA, 98312-4199. In addition, KT has a North Base at 21711 Vetter Road NW, Poulsbo, WA, 98370 and a South Base at 1430 Retsil Road, Port Orchard, WA, 98366. Both Routed and *ACCESS* operators report to the South Base and to the North Base for transit service in those areas.

KT also has a customer service office in the Bremerton Transportation Center (BTC), a major, multi-modal center serving buses, car ferries and passenger-only ferries, that opened in 2000 at 10 Washington Avenue in downtown Bremerton. A commuter-oriented, 72-space bicycle-storage facility, The Bike Barn at Bainbridge Island, opened in 1999 in the center of the Bainbridge Island Transfer Center.

The Appendices contain the completed forms for the state's public transportation management system for all KT's owned and contracted revenue vehicles and facilities.

## **Section III: Service Characteristics**

In 2013, KT provided fixed route service, ADA-accessible door-to-door service, Worker/Driver service, vanpool service, general public dial-a-ride service, and foot ferry service for parts of Kitsap County. KT's system map, in Appendix I, shows where Fixed Route, Worker/Driver service, and Kitsap Transit Foot Ferry (KTFF) service operated in 2013.

The headways for routes that operated all day were usually one hour. During commute hours, many of these all-day routes were also scheduled to meet Washington State Ferries (WSF) at the Bainbridge Island, Bremerton and Southworth terminals. Weekday service hours were from 4:00 a.m. to 8:30 p.m. On Saturdays, 19 routes were operated on one-hour headways between 10:00 a.m. and 5:30 p.m.

### **Cash Fares:**

Cash fares are \$2.00 on Routed buses and the Kitsap Transit Foot Ferry (KTFF), payable with cash or E-purse loaded on an ORCA card. Cash fares are \$1.00 on Routed buses and the KTFF with a Reduced Fare or Regional Reduced Fare qualified ORCA card or a Regional Reduced Fare Permit Card. Cash fares on *ACCESS* (demand response) buses and Dial-A-Ride services are \$2.00, and there is a \$1.00 surcharge for outlying area service in *ACCESS*.

### **Reduced Fare Eligibility**

Riders who meet the following criteria are eligible for a Reduced Fare ORCA Card:

- Youth: Age 6-18 with proof of age.
- Low Income: Department of Social and Health Services (DSHS) low income, with proof of DSHS status and family size.

Riders who meet the following criteria are eligible for a Regional Reduced Fare ORCA Card:

- Medicare Cardholders
- Elderly: Age 65 and older with proof of age.
- Disabled: With proof of Medicare card, Social Security Disability benefits, 40% or greater Veterans Affairs disability or Supplemental Security Income benefits for a disability.

### **Monthly Passes**

Monthly Bus Pass - \$50.00

Good on KT Routed service, *ACCESS* (eligible riders only) and KTFF.

Reduced Fare Monthly Bus Pass - \$25.00

Good on KT Routed service, *ACCESS* (eligible riders only) and KTFF. Riders must qualify for and have a Reduced Fare or Regional Reduced Fare-qualified ORCA card to purchase.

### **Regional Monthly Puget Pass**

Valid for fare on Kitsap, Everett, Pierce, Metro, Community and Sound Transit(s) up to the trip value. When riding a service with a higher fare, the difference can be paid with cash or via ORCA E-purse. Many trip values are available. The most common for KT riders are:

Puget Pass - \$2.00 each fare or \$72.00 a month

Reduced Fare Puget Pass - \$1.00 Fare or \$36.00 a month

Riders who use WSF can add a monthly ferry pass to their ORCA card in combination with any of the passes above to pay their fare on all the systems they ride.

### **Transportation Incentive Program (TIP) pass** (Free for eligible Department of Defense (DOD) employees)

Employees of the DOD who commute to work by bus, ferry (walk-ons or passengers in an eligible vanpool on either KTFF or WSF), or vanpool (either public or private and registered with Kitsap Transit) are eligible to register in the Transportation Incentive Program. Under this program, registered employees can receive a financial incentive, up to \$130 a month, for their actual commuting costs. The TIP Pass allows free rides on Routed bus, Worker/Driver bus, vanpool and the KTFF or *ACCESS* service.

### **Free Riders**

- Children under the age of six ride free when accompanied by a fare-paying, responsible individual.
- Any of the region's law enforcement personnel and fire fighters, in uniform or out of uniform, inside or outside of their jurisdiction.
- Personal-care attendants traveling with eligible disabled customers.
- Bikes ride free on Kitsap Transit buses and the Kitsap Transit Foot Ferry, limited to space available.

### **Vanpools**

Vanpool rates are determined by the size of the van, the number of miles traveled on the vanpool route and the number of riders on board. A full listing of vanpool fares can be viewed on our website at [www.kitsaptransit.com](http://www.kitsaptransit.com).

### **Worker/Driver Buses**

The one-way cash fare on Worker/Driver (W/D) buses is \$2.00 payable with cash or ORCA card E-purse. W/D riders can also pay their fare with a \$75 KT W/D monthly bus pass loaded on an ORCA card. Monthly passes are valid on W/D routes as well as on Routed, *ACCESS* (eligible riders only) and the KTFF. Most W/D fares are paid by the Navy via TIP.

## **Section IV: Service Connections**

KT provides bus connection services at the following transportation facilities:

- BTC with connections to WSF, KTFF, Mason Transit and other KT bus routes
- Bainbridge Island Ferry Terminal with connections to WSF and other KT bus routes
- Kingston Ferry Terminal with connections to WSF and other KT bus routes
- Southworth Ferry Terminal with connections to WSF
- Port Orchard Ferry Dock with connections to KTFF and other KT bus routes
- Annapolis Ferry dock with connections to KTFF
- West Bremerton Transfer Center with connections to other KT bus routes
- East Bremerton Transfer Center with connections to other KT bus routes
- Silverdale Transfer Center with connections to other KT bus routes
- Poulsbo Transfer Center with connections to other KT bus routes and Jefferson Transit
- Purdy park & ride lot in Pierce County with connections to Pierce Transit

In addition, KT provided open-door service to many of the elementary, middle and high schools in its service area, as well as both branches of Olympic College, Bremerton and Poulsbo. All but two of the W/D buses and many vanpool vans served Puget Sound Naval Shipyard (PSNS)/Naval Base Kitsap. Other vanpools serve Naval Base Bangor along with two W/D buses.

KT operated Routed and/or W/D service to 24 park & ride lots throughout Kitsap County in 2013.

## **Section V: Activities in 2013**

In 2013, we addressed RCW 47.04.280 Transportation System Policy Goals through the following action strategies:

- 1. Preservation:** To maintain, preserve, and extend the life and utility of prior investments in transportation systems and services.
  - *Continue a long-range service planning process with the Kitsap Transit Board of*

*Commissioners focusing heavily on partnerships with other Kitsap County jurisdictions to include transit planning.* Kitsap Transit has worked with the local jurisdictions to ensure transit and transportation alternatives are included in their work on the comprehensive plan updates to be published in 2016.

- *Finalize a replacement program for the Routed and ACCESS small bus fleets.* A replacement program has been determined and decisions made by the Board of Commissioners regarding high capacity vehicle purchases.
- *Lower fleet fuel economy from 5.7 miles per gallon.* Fleet fuel economy in 2013 was 9.9 miles per gallon.
- *Begin recruiting new members for its Citizens Advisory Committee.* New members were recruited and approved in 2013.
- *Adopt a more comprehensive Title VI Plan that meets the USDOT guidelines.* Updated, comprehensive Title VI Plan was approved by the Federal Transit Administration.

**2. Safety:** To provide for and improve the safety and security of transportation customers and the transportation system.

- *Improve Charleston Base as part of the 2012 Buffer Zone Protection Plan.* Protection completed for Charleston Base generator and corner of building which are essential areas of the facility.
- *Attend the Virginia Tech Environmental Management training sponsored by the Federal Transit Administration.* Two of the four required training sections were attended in 2013, and the Charleston Base Maintenance Facility as well as the Bremerton Transportation vessel fueling facility are included in the baseline.
- *Develop an Emergency Management Upgrade to the current scheduling system so that it is easier to re-route buses during an emergency.* Kitsap Transit continued to work with the software developer to produce a prototype that will be available for testing in 2014.
- *Maintain current security standards and maintain the security plan with WSF for the state-operated ferry terminals in Kitsap County.* All administrative staff has gone through Emergency Response Training to identify their roles. Eighty percent (80%) of employees have gone through Active Shooter training. All employees have gone through the newly required MSDS training. Ten percent (10%) of employees have maintained their first aid/CPR certifications.

**3. Mobility:** To improve the predictable movement of goods and people throughout Washington State.

- *Implement the full range of Automatic Vehicle Locator (AVL) and Automatic Passenger Counter (APC) technology.* Kitsap Transit concluded installation in the Fixed Route system for Automatic Vehicle Locators and Automatic Passenger Counters. Information from the system is currently being used to report ridership.



- *Use AVL/APC data to better size equipment as well as service schedules to passenger demand.* Kitsap Transit routinely checks vehicle requirements based on ridership numbers.
- *Continue to meet with the agency's three advisory committees for input on all KT programs and for special needs issues and discussions.* Citizens Advisory Committee meetings were held every month during 2013. Bi-monthly meetings were held with ACCESS passenger advisory committee and quarterly meetings were held with the Title VI committee that works to ensure that minority and limited English speaking population needs are met.
- *Assist the Puget Sound Naval Shipyard with additional transportation required inside the shipyard as a result of sequestration.* For a period of six months, Kitsap Transit assisted the Puget Sound Naval Shipyard by using existing Worker/Driver routes to provide internal shuttles for the AM shift arrivals and PM shift departures.

**4. Environment:** To enhance Washington's quality of life through transportation investments that promote energy conservation, enhance healthy communities and protect the environment.

- *Monitor proposed 20% greenhouse gas emissions and sustainability program.* Sustainability program reports reductions in water and electricity usage, increased recycling, and gains made in fuel economy.
- *Continue efforts, through new clean-air buses and use of smaller buses in general, to reduce transit vehicle fuel use and emissions to minimum levels.* Plans developed in 2013 for replacement of ACCESS buses with propane-fueled buses. Plans made in 2013 for installation of propane fueling station at Charleston Base.
- *Study fleet composition and available technology to enhance KT fleet mileage, with an interim fleet-average goal of 7.0 mpg within the next two to five years.* Plans developed to test full size electric bus in 2014.
- *Continue plans to test new "porous pavements" in development of new or expanded park & ride lots and other Low Impact Development (LID) techniques, building off the Harper Church Park & Ride lot as our porous pavement prototype.* Kitsap Transit has included porous pavement in its North Base designs and plans to go to construction in 2014.
- *Work cooperatively with Bremerton Clean Energy Technology Alliance to upgrade lighting at Charleston Base and at park & rides.* The Bremerton Clean Energy Technology Alliance was instrumental in assisting Kitsap Transit with preparing bid specifications and determining qualified vendors for its lighting upgrade that will be accomplished in 2014.

**5. Stewardship:** To continuously improve the quality, effectiveness and efficiency of the transportation system.

- *Continue Commute Trip Reduction (CTR) support at a very high level to major employers and centers with a focus on significantly increasing KT's mode share at PSNS.* Kitsap Transit regularly supports CTR sites and has worked with PSNS to ensure access to alternate modes is more accessible to workers. A Worker/Driver campaign is scheduled for 2014 to increase participation.
- *Financially, and with other resources, support the effort of the Kitsap Regional Coordinating Council on a long-range, county-wide, multi-modal plan.* Kitsap Transit provided financial and staffing support to assist in the creation of the Phase I multi-modal long range plan. Kitsap Transit has agreed to assume the lead for Phase II of this effort in 2015.
- *Continue assisting cities, especially Bremerton and Port Orchard, in downtown redevelopment activities and other densification/Transit Oriented Development projects.* Kitsap Transit worked with the City of Bremerton to fully develop the Kitsap Transit Harborside building to include additional conference space for the Kitsap County area.
- *Move forward with developing a hybrid spare vessel for the KTFF based on a cost-benefit analysis that projected the following:*
  - *That the hybrid system will likely pay for itself in approximately four years*
  - *Total savings over 20 years of approximately \$1.3 million compared to an optimum diesel engine*
  - *Total emissions reductions between 53% and 67%*
  - *Quality and performance equal to or better than the Admiral Pete*Kitsap Transit made the decision to use an alternate vessel material for the sister ship to the Admiral Pete. The use of hybrid technology, which was proven to be cost effective in 2013, will be implemented in the design process that will occur in 2014.

## **Section VI: Proposed Action Strategies, 2014 – 2019**

The proposed changes in Section VI below are action strategies that reflect upon the following state Transportation Service Objectives.

**1. Preservation:** To maintain, preserve and extend the life and utility of prior investments in transportation systems and services.

- Continue a long-range service planning process with the Kitsap Transit Board of Commissioners focusing heavily on partnerships with other Kitsap County jurisdictions to include transit planning to ensure transit and transportation alternatives are included in their work on the comprehensive plan updates that are to be published in 2016.

- Apply for federal funding to ensure continuation of fleet replacements per the Kitsap Transit vehicle replacement program.
  - Continue to respond to all ferry system breakdowns with extra between-terminal service.
  - Continue 100% adherence to scheduled maintenance requirements for vehicles and facilities.
  - Continue to recruit new members for the Citizens Advisory Committee as vacancies become available.
  - Meet the requirements of the newly adopted Title VI Plan and all updates required.
- 2. Safety:** To provide for and improve the safety and security of transportation customers and the transportation system.
- Develop an Emergency Management Upgrade to the current scheduling system so that it is easier to re-route buses during an emergency.
  - Maintain current security standards and update information to be included in the Kitsap County Hazard Mitigation Plan.
  - Perform yearly emergency drills.
  - Order new buses equipped with on-board video.
- 3. Mobility:** To improve the predictable movement of goods and people throughout Washington State.
- Implement the full range of Automatic Vehicle Locator (AVL) and Automatic Passenger Counter (APC) technology including voice annunciation for bus stops and security cameras in all Fixed Route and ACCESS vehicles.
  - Use AVL/APC data to better size equipment as well as service schedules to passenger demand.
  - Continue to meet county-wide ACCESS demand within budget by use of zoning and connections to Routed trunk routes.
  - Continue to meet with the agency's three advisory committees for input on all KT programs and for special needs issues and discussions.
  - Continue connection standards with WSF, public and private ferry operators, Mason, Jefferson and Pierce county transit systems at 2012 levels.
  - Improve ADA access at ferry terminals and transit centers.
  - Improve system mobility by:
    - Relocating and constructing the Silverdale Transit Center
    - Relocating and constructing an East Bremerton Transit Center
    - Improving the West Bremerton Transit Center
    - Locating and building an additional Port Orchard Park & Ride near Mullenix Road
    - Making ADA improvements to the Annapolis Ferry Terminal

**4. Environment:** To enhance Washington's quality of life through transportation investments that promote energy conservation, enhance healthy communities and protect the environment.

- Complete the *Virginia Tech Environmental Sustainability Management System training* sponsored by the Federal Transit Administration.
- Achieve ISO 14001 certification for Charleston Base and the vessel fueling facility at the Bremerton Transportation Center.
  - Extend ISO 14001 principles to all other Kitsap Transit operating facilities.
  - Construct new facilities utilizing ISO 14001 principles.
- Continue efforts, through new clean-air buses and use of smaller buses in general, to reduce transit vehicle fuel use and emissions to minimum levels.
  - Promote use of alternative fuels such as propane to meet 2018 State of Washington alternative fuel requirements.
  - Transition *ACCESS* fleet to propane use.
  - Perform pilot test of full size electric transit buses
  - Future support vehicles to be either flex fuel, electric or hybrid.
- Study fleet composition and available technology to enhance KT fleet mileage, with an interim fleet-average goal of 9.0 mpg within the next two to five years.
- When possible, utilize environmentally safe and sustainable building practices for all construction projects.
- Continue to pursue alternative energy vehicles and facilities for public use
  - Park & Rides
  - Staff vehicles
  - Buses and vanpools

**5. Stewardship:** To continuously improve the quality, effectiveness and efficiency of the transportation system.

- Continue to pursue federal funding opportunities to support needed facilities, services and planning efforts that enhance the efficiency of Kitsap Transit.
- Maintain emphasis on passengers per hour according to Kitsap Transit's Service Standards.
- Continue CTR support at a very high level to major employers and centers with a focus on significantly increasing KT's mode share at PSNS. Increase Worker/Driver service to meet new employee hires at PSNS.
- Financially, and with other resources, support the effort of the Kitsap Regional Coordinating Council on a long-range, county-wide, multi-modal plan through Phases I and II.
- Continue assisting cities, especially Bremerton and Port Orchard, in downtown redevelopment activities and other densification/Transit Oriented Development projects.
- Complete the Passenger Only Ferry Business Plan.
- Move forward with developing a hybrid spare vessel for the KTFF based on a

cost-benefit analysis that projected the following:

- That the hybrid system will likely pay for itself in approximately four years
- Total savings over 20 years of approximately \$1.3 million compared to an optimum diesel engine
- Total emissions reductions between 53% and 67%
- Quality and performance equal to or better than the Admiral Pete

# **Section VII: Proposed Changes, 2013 – 2019 Capital Programs**

	2013 Actual		2014 Budget		2015		2016		2017		2018		2019	
	Grant Funding	Local Funding	Grant Funding	Local Funding	Grant Funding	Local Funding	Grant Funding	Local Funding	Grant Funding	Local Funding	Grant Funding	Local Funding	Grant Funding	Local Funding
Vehicles	\$ 868,000	\$ 561,962	\$ 1,528,346	\$ 1,558,851	\$ 3,657,120	\$ 1,437,776	\$ 5,046,377	\$ 1,430,594	\$ 3,535,773	\$ 1,042,439	\$ 3,557,809	\$ 1,047,948	\$ 6,098,317	\$ 1,609,579
Passenger Ferry Vessels	\$ 601,484	\$ 200,825	\$ 3,572,893	\$ 101,457	\$ 2,526,845	\$ 250,000	\$ 75,000	\$ 225,000	\$ -	\$ 125,000	\$ -	\$ 175,000	\$ 75,000	\$ 175,000
Operations Bases	\$ 183,567	\$ 19,487	\$ 7,168,063	\$ 1,620,852	\$ 775,000	\$ 350,000	\$ 2,150,000	\$ 87,500	\$ 2,000,000	\$ 75,000	\$ 2,675,000	\$ 187,500	\$ 2,150,000	\$ 350,000
Passenger Ferry Terminals	\$ 469,119	\$ 25,756	\$ 2,873,683	\$ 20,000	\$ 350,000	\$ 475,000	\$ 1,780,000	\$ -	\$ 700,000	\$ -	\$ 300,000	\$ -	\$ 400,000	\$ -
Transfer Centers / Park & Ride	\$ -	\$ 63,756	\$ 2,688,827	\$ 814,375	\$ 2,595,000	\$ 1,178,256	\$ 1,078,000	\$ 1,052,000	\$ 6,625,000	\$ 1,755,000	\$ 650,000	\$ 212,000	\$ 3,325,000	\$ 874,500
Equipment and Systems	\$ 56,400	\$ 320,860	\$ 742,436	\$ 923,609	\$ -	\$ 380,000	\$ 520,000	\$ 140,000	\$ -	\$ 225,000	\$ 40,000	\$ 233,200	\$ -	\$ 150,000
Total Capital Program	\$ 2,178,570	\$ 1,192,646	\$ 18,574,248	\$ 5,039,144	\$ 9,903,965	\$ 4,071,032	\$ 10,649,377	\$ 2,935,094	\$ 12,860,773	\$ 3,222,439	\$ 7,222,809	\$ 1,855,648	\$ 12,048,317	\$ 3,159,079

## **Section VIII: Operating Data, 2013 – 2019**

(All figures, except 2013, in thousands of units)

<b><u>Fixed Route Service</u></b>	<b><u>2013</u></b>	<b><u>2014</u></b>	<b><u>2015</u></b>	<b><u>2016</u></b>	<b><u>2017</u></b>	<b><u>2018</u></b>	<b><u>2019</u></b>
Revenue vehicle hours	101,094	101	101	101	101	101	101
Total vehicle miles	123,444	123	123	123	123	123	123
Revenue vehicle miles	1,687,044	1,690	1,690	1,690	1,690	1,690	1,690
Total vehicle miles	2,115,256	2,115	2,115	2,115	2,115	2,115	2,115
Passenger trips	2,454,221	2,515	2,515	2,515	2,515	2,515	2,515
Fatalities	0						
Reportable injuries	4						
Collisions	4						
Diesel fuel consumed (gal)	348,088						
<b><u>Demand Response Service</u></b>	<b><u>2013</u></b>	<b><u>2014</u></b>	<b><u>2015</u></b>	<b><u>2016</u></b>	<b><u>2017</u></b>	<b><u>2018</u></b>	<b><u>2019</u></b>
Revenue vehicle hours	80,767	80	80	80	80	80	80
Total vehicle miles	86,234	86	86	86	86	86	86
Revenue vehicle miles	1,234,202	1,234	1,234	1,234	1,234	1,234	1,234
Total vehicle miles	1,359,397	1,360	1,360	1,360	1,360	1,360	1,360
Passenger trips	283,598	285	290	290	300	313	315
Fatalities	0						
Reportable injuries	0						
Collisions	0						
Diesel fuel consumed (gal)	143,466						
<b><u>Worker/Driver Service</u></b>	<b><u>2013</u></b>	<b><u>2014</u></b>	<b><u>2015</u></b>	<b><u>2016</u></b>	<b><u>2017</u></b>	<b><u>2018</u></b>	<b><u>2019</u></b>
Revenue vehicle hours	15,095	15	15	15	15	15	15
Total vehicle miles	18,353	18	18	18	18	18	18
Revenue vehicle miles	284,214	288	288	288	288	288	288
Total vehicle miles	309,016	310	310	310	310	310	310
Passenger trips	513,370	515	518	521	524	527	530
Fatalities	0						
Reportable injuries	2						
Collisions	1						
Diesel fuel consumed (gal)	96,410						

<b><u>Vanpool Service</u></b>	<b><u>2013</u></b>	<b><u>2014</u></b>	<b><u>2015</u></b>	<b><u>2016</u></b>	<b><u>2017</u></b>	<b><u>2018</u></b>	<b><u>2019</u></b>
Revenue vehicle hours	31,049	32	32	32	32	32	32
Total vehicle miles	31,049	32	32	32	32	32	32
Revenue vehicle miles	961,211	1,000	1,000	1,000	1,000	1,000	1,000
Total vehicle miles	961,211	1,000	1,000	1,000	1,000	1,000	1,000
Passenger trips	226,339	230	232	235	237	240	245
Fatalities	0						
Reportable injuries	0						
Collisions	0						
Diesel fuel consumed (gal)	7,612						
Gasoline consumed (gal)	52,684						
<b><u>Foot Ferry Service</u></b>	<b><u>2013</u></b>	<b><u>2014</u></b>	<b><u>2015</u></b>	<b><u>2016</u></b>	<b><u>2017</u></b>	<b><u>2018</u></b>	<b><u>2019</u></b>
Revenue vehicle hours	6,284	6	6	6	6	6	6
Total vehicle miles	6,494	6	6	6	6	6	6
Revenue vehicle miles	47,174	47	47	47	47	47	47
Total vehicle miles	48,224	48	48	48	48	48	48
Passenger trips	450,732	455	457	460	462	465	467
Fatalities	0						
Reportable injuries	0						
Collisions	0						
Diesel fuel consumed (gal)	42,650						
Gasoline consumed (gal)	7,980						

Safety related data (fatalities, injuries, and collisions) used NTD definitions.



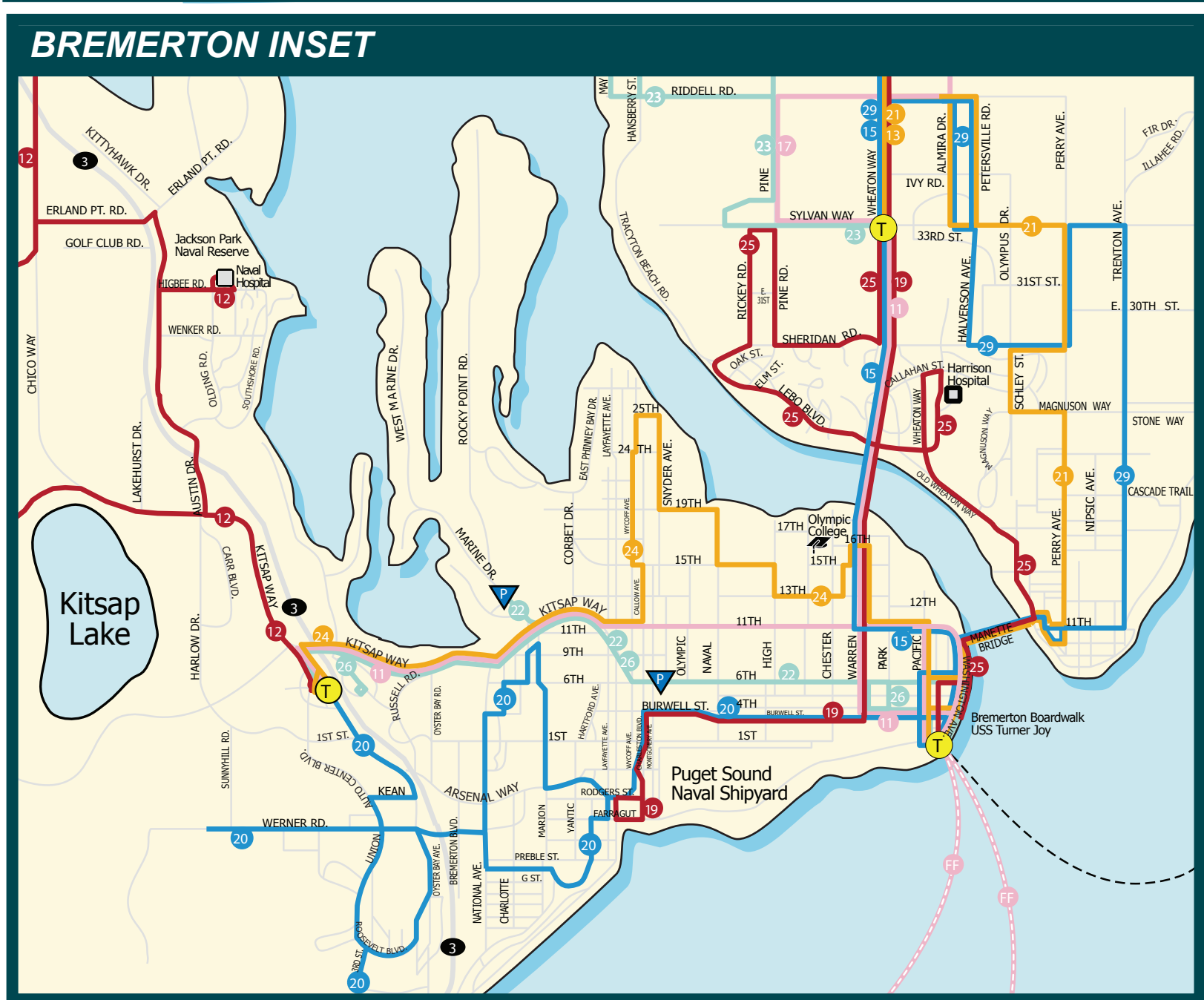
## **Section IX: Operating Revenues and Expenditures, 2013 – 2019**

	<b>Actual 2013</b>	<b>Budget 2014</b>	<b>2015</b>	<b>2016</b>	<b>2017</b>	<b>2018</b>	<b>2019</b>
<b>REVENUES</b>							
FARES - ROUTED	3,106	3,048	3,080	3,110	3,140	3,170	3,200
FARES - WORKER DRIVER	2,039	2,028	2,050	2,070	2,090	2,110	2,130
FARES - VANPOOL	589	588	590	600	610	620	630
FARES - LOCAL POF	780	786	790	800	810	820	830
FARES - DEMAND RESPONSE	298	300	300	300	300	300	300
PARKING LOT	135	132	135	135	135	135	135
ADVERTISING	5	180	180	180	180	180	180
RENTAL INCOME	337	305	330	330	330	430	430
SALES TAX - NET	27,607	28,140	29,120	30,140	31,190	32,280	33,410
OPERATING GRANTS (SNPT / RM / WA REV)	1,494	1,140	840	840	840	840	840
OPERATING GRANTS (CTR / PM)	95	1,056	680	680	680	680	680
INTEREST INCOME	42	36	50	45	45	40	40
OTHER INCOME	37	30	30	1,030	30	30	30
<b>TOTAL REVENUES</b>	<b>36,564</b>	<b>37,769</b>	<b>38,175</b>	<b>40,260</b>	<b>40,380</b>	<b>41,635</b>	<b>42,835</b>
<b>OPERATING EXPENSES</b>							
ROUTED SERVICE	14,451	15,539	16,320	17,140	18,000	18,900	19,850
WORKER DRIVER	2,860	3,268	3,430	3,600	3,780	3,970	4,170
DEMAND RESPONSE	9,700	10,358	10,880	11,420	11,990	12,590	13,220
VANPOOL	1,045	1,355	1,420	1,490	1,560	1,640	1,720
LOCAL POF	2,200	2,102	2,210	2,320	2,440	2,560	2,690
CROSS SOUND POF	-	-	-	-	-	-	-
<b>TOTAL OPERATING EXPENSES</b>	<b>30,256</b>	<b>32,622</b>	<b>34,260</b>	<b>35,970</b>	<b>37,770</b>	<b>39,660</b>	<b>41,650</b>
<b>NET CASH AVAILABLE FROM OPS</b>	<b>6,308</b>	<b>5,147</b>	<b>3,915</b>	<b>4,290</b>	<b>2,610</b>	<b>1,975</b>	<b>1,185</b>
<b>BEGINNING UNRESTRICTED CASH</b>	<b>6,829</b>	<b>7,981</b>	<b>7,641</b>	<b>7,177</b>	<b>7,014</b>	<b>5,784</b>	<b>4,747</b>
NET CASH AVAILABLE FROM OPS	6,308	5,147	3,915	4,290	2,610	1,975	1,185
PRINCIPAL AND INTEREST PAYMENT	(4,137)	(508)	(758)	(1,068)	(1,068)	(706)	(706)
CAPITAL PURCHASES/RESERVE - PSNS TIP	(295)	(988)	(700)	(700)	(700)	(700)	(700)
CAPITAL PURCHASES, NET	(898)	(4,051)	(3,371)	(2,235)	(2,522)	(1,156)	(2,459)
OTHER, NET	174	60	450	(450)	450	(450)	450
<b>ENDING UNRESTRICTED CASH</b>	<b>7,981</b>	<b>7,641</b>	<b>7,177</b>	<b>7,014</b>	<b>5,784</b>	<b>4,747</b>	<b>2,517</b>

## **Appendices**

- I      Service Map
- II     Equipment and Facilities Asset Inventory
- III    Rolling Stock Asset Inventory





- |     |                       |
|-----|-----------------------|
| 8   | Bethel                |
| 13  | Parkwood East Limited |
| 21  | Perry Avenue          |
| 24  | Olympic College       |
| 43  | Viking Avenue         |
| 96  | Sunrise               |
| 97  | Crystal Springs       |
| 106 | Fletcher Bay          |

Kitsap Transit 2012-2018 Transit Development Plan, Appendix I

**Owned Equipment Inventory**  
**Agency: Kitsap Transit**  
**Date: February 2014**

Code		Equipment Code and Description	Condition (points)	Age (years)	Remaining Useful Life (years)	Replacement Cost (\$)	Comments
1.	08	Radio Control Base Station - Gold Mountain	80	10	0	\$85,000	
2.	10	Opticom System Stationary Unit	80	19	0	\$150,000	
3.	05	1998 Fuel Truck for Fueling Buses	80	14	0	\$120,000	
4.	15	Onan Generator w/Transfer	80	12	0	\$90,000	
5.	05	2003 International Fuel Truck	90	10	0	\$135,000	
6.	04	Mobile Data Terminals	100	8	3	\$479,612	
7.	04	Smart Card equipment & software	100	6	5	\$3,890,642	



# Owned Facility Inventory

Agency: Kitsap Transit

Date: February 2014

Facility Code		Facility Name	Condition (points)	Age (years)	Remaining Useful Life (years)	Replacement Cost (\$)	Comments
1	11	Central Operations Base	85	30	0	\$250,000	
2	10	Building, 200 Charleston Blvd.	85	21	0	\$10,088,355	
3	10	Harborside Bldg., 60 Washington Ave.	100	9	11	\$8,000,000	
4	23	Harborside Garage, 60 Washington Ave.	100	9	11	\$3,921,781	
5	10	ACCESS, Werner Rd.	85	17	0	\$121,816	
6	16	Bremerton Transportation Center	90	12	8	\$22,844,601	
7	16	Port Orchard Intermodal Terminal	100	8	12	\$3,667,761	
8	6	Bainbridge Island Transfer Center	95	12	8	\$894,378	
9	15	Bike Barn/Bainbridge Island	90	13	7	\$228,000	
10	22	North Base Maint/Ops Facilities	80	9	1	\$125,516	
11	22	South Base Maint/Ops Facilities	80	13	7	\$102,502	
12	22	North Base 21709 Vetter Rd. Maint./Ops.	95	7	13	\$998,031	
13	8	BTC Pedestrian Canopy	100	5	15	\$1,022,018	
14	21	Main Base Expansion 196 & 198 Charleston Blvd	100	3	17	\$6,380,064	

[illegible]

**Public Transportation Management System**  
**Owned Rolling Stock Inventory**  
**Agency: Kitsap Transit**  
**Date: February 2014**

		VEH						REM.	REP. \$\$	ADA		FUEL	WSDOT		
	YEAR / MAKE / MODEL	CODE	V.I.N.	EQ#	LTD MILES	CONDITION	AGE	LIFE	(THOUSANDS)	ACCESS	SEATING	TYPE	TITLE (YES/NO)	LICENSE	STATUS
48	1999 / GMC / SAFARI TM11006	13	IGKDM19W0XB536386	421	78212	65	15	0	21	NO	7	G	NO	RS03196	ACTIVE
49	1999 / GMC / SAFARI TM11006	13	IGKDM19W4XB537282	422	86050	65	15	0	21	NO	7	G	NO	RS03195	ACTIVE
50	2001 / GMC / SAFARI TM11006	13	IGKDM19W41B520232	424	152719	75	13	0	21	NO	7	G	NO	RS07241	ACTIVE
51	2001 / GMC / SAFARI TM11006	13	IGKDM19W91B520923	425	116755	85	13	0	21	NO	7	G	NO	95597C	ACTIVE
52	2001 / GMC / SAFARI TM11006	13	IGKDM19W81B520234	426	69665	85	13	0	21	NO	7	G	NO	RS04020	ACTIVE
53	2001 / GMC / SAFARI TM11006	13	IGKDM19W81B520105	427	77105	85	13	0	21	NO	7	G	NO	RS07244	ACTIVE
54	2001 / GMC / SAFARI TM11006	13	IGKDM19W91B520761	429	77224	85	13	0	21	NO	7	G	NO	RS07246	ACTIVE
55	2001 / GMC / SAFARI TM11006	13	IGKDM19W91B520324	430	82795	85	13	0	21	NO	7	G	NO	RS07247	ACTIVE
56	2002 / CMD / CHEVY ASTRO VAN	13	1GNDM19XX2B150188	435	82786	85	12	0	21	NO	7	G	NO	RS04126	ACTIVE
57	2002 / CMD / CHEVY ASTRO VAN	13	1GNDM19X12B150239	436	56362	85	12	0	21	NO	7	G	NO	RS04127	ACTIVE
58	2002 / CMD / CHEVY ASTRO VAN	13	1GNDM19X22B150167	437	94089	85	12	0	21	NO	7	G	NO	RS04128	ACTIVE
59	2002 / CMD / CHEVY ASTRO VAN	13	1GNDM19X62B150141	438	76600	85	12	0	21	NO	7	G	NO	RS04129	ACTIVE
60	2002 / CMD / CHEVY ASTRO VAN	13	1GNDM19X52B150440	441	113959	85	12	0	21	NO	7	G	NO	RS04132	ACTIVE
61	2002 / CMD / CHEVY ASTRO VAN	13	1GNDM19X22B150346	443	91663	85	12	0	21	NO	7	G	NO	RS04134	ACTIVE
62	2002 / CMD / CHEVY ASTRO VAN	13	1GNDM19XX2B150403	445	67193	85	12	0	21	NO	7	G	NO	RS04136	ACTIVE
63	2002 / CMD / CHEVY ASTRO VAN	13	1GNDM19X82B150027	447	83779	85	12	0	21	NO	7	G	NO	RS04138	ACTIVE
64	2002 / CMD / CHEVY ASTRO VAN	13	1GNDM19X72B150424	450	70017	85	12	0	21	NO	7	G	NO	RS04141	ACTIVE
65	2002 / CMD / CHEVY ASTRO VAN	13	1GNDM19X02B150409	452	75299	85	12	0	21	NO	7	G	NO	RS04143	ACTIVE
66	2002 / CMD / CHEVY ASTRO VAN	13	1GNDM19X72B150858	455	96049	85	12	0	21	NO	7	G	NO	RS04146	ACTIVE
67	2002 / CMD / CHEVY ASTRO VAN	13	1GNDM19X72B150584	457	71073	85	12	0	21	NO	7	G	NO	RS04148	ACTIVE
68	2002 / CMD / CHEVY ASTRO VAN	13	1GNDM19X42B150994	458	67067	85	12	0	21	NO	7	G	NO	RS04149	ACTIVE
69	2002 / CMD / CHEVY ASTRO VAN	13	1GNDM19X52B150809	459	66425	85	12	0	21	NO	7	G	NO	RS04150	ACTIVE
70	2002 / CMD / CHEVY ASTRO VAN	13	1GNDM19X02B151091	460	67310	85	12	0	21	NO	7	G	NO	RS04151	ACTIVE
71	2002 / CMD / CHEVY ASTRO VAN	13	1GNDM19X82B151047	461	70651	85	12	0	21	NO	7	G	NO	RS04152	ACTIVE
72	2002 / CMD / CHEVY ASTRO VAN	13	1GNDM19X82B150951	462	55165	85	12	0	21	NO	7	G	NO	RS04153	ACTIVE
73	2002 / CMD / CHEVY ASTRO VAN	13	1GNDM19X82B150108	463	58305	85	12	0	21	NO	7	G	NO	RS04154	ACTIVE
74	2002 / CMD / CHEVY ASTRO VAN	13	1GNDM19X72B150410	464	80325	85	12	0	21	NO	7	G	NO	RS04155	ACTIVE
75	2002 / CMD / CHEVY ASTRO VAN	13	1GNDM19X52B150325	465	76815	85	12	0	21	NO	7	G	NO	RS04156	ACTIVE
76	2002 / CMD / CHEVY ASTRO VAN	13	1GNDM19X32B150310	466	74286	85	12	0	21	NO	7	G	NO	RS04157	ACTIVE
77	2002 / CMD / CHEVY ASTRO VAN	13	1GNDM19X42B150509	467	120910	85	12	0	21	NO	7	G	NO	RS04158	ACTIVE
78	2002 / CMD / CHEVY ASTRO VAN	13	1GNDM19X12B150726	468	98458	85	12	0	21	NO	7	G	NO	RS04170	ACTIVE
79	2002 / CMD / CHEVY ASTRO VAN	13	1GNDM19X82B150206	470	79600	85	12	0	21	NO	7	G	NO	RS04181	ACTIVE
80	2002 / CMD / CHEVY ASTRO VAN	13	1GNDM19XX2B150658	471	88540	85	12	0	21	NO	7	G	NO	RS04182	ACTIVE
81	2002 / CMD / CHEVY ASTRO VAN	13	1GNDM19X92B150733	473	73372	85	12	0	21	NO	7	G	NO	RS04184	ACTIVE
82	2002 / CMD / CHEVY ASTRO VAN	13	1GNDM19X12B150614	474	78770	85	12	0	21	NO	7	G	NO	RS04185	ACTIVE
83	2002 / FRD / ECONOLINE RAISED ROOF	14	1FTSS34F02HB40113	500	136885	85	12	0	53	YES	5+1	D	NO	62762C	ACTIVE
84	2002 / FRD / ECONOLINE RAISED ROOF	14	1FTSS34F02HB40116	501	123152	85	12	0	53	YES	5+1	D	NO	62761C	ACTIVE
85	2002 / FRD / ECONOLINE RAISED ROOF	14	1FTSS34F02HB40119	502	120875	85	12	0	53	YES	5+1	D	NO	62760C	ACTIVE
86	2002 / FRD / ECONOLINE RAISED ROOF	14	1FTSS34F02HB40120	503	86303	85	12	0	53	YES	5+1	D	NO	62759C	ACTIVE
87	2002 / FRD / ECONOLINE RAISED ROOF	14	1FTSS34F92HB40118	504	100764	85	12	0	53	YES	5+1	D	NO	62777C	ACTIVE
88	2002 / FRD / ECONOLINE RAISED ROOF	14	1FTSS34F12HB40114	505	121522	85	12	0	53	YES	5+1	D	NO	62763C	ACTIVE
89	2002 / FRD / ECONOLINE RAISED ROOF	14	1FTSS34F32HB40115	506	128534	85	12	0	53	YES	5+1	D	NO	81519C	ACTIVE
90	2002 / FRD / ECONOLINE RAISED ROOF	14	1FTSS34F72HB40117	507	119983	85	12	0	53	YES	5+1	D	NO	62764C	ACTIVE
91	2002 / FRD / ECONOLINE RAISED ROOF	14	1FTSS34F92HB40121	508	120162	85	12	0	53	YES	5+1	D	NO	62778C	ACTIVE
92	2002 / FRD / ECONOLINE RAISED ROOF	14	1FTSS34F02HB40122	509	134753	85	12	0	53	YES	5+1	D	NO	62813C	ACTIVE
93	2002 / FRD / ECONOLINE RAISED ROOF	14	1FTSS34F22HB40123	510	116883	85	12	0	53	YES	4+1	D	NO	62814C	ACTIVE
94	2002 / FRD / ECONOLINE RAISED ROOF	14	1FTSS34F42HB40124	511	123165	85	12	0	53	YES	4+1	D	NO	62815C	ACTIVE
95	2003 / FRD / ECONOLINE 350 20'	28	1FDSS34F73HB09284	515	208759	85	11	0	34	YES	7+1	D	NO	62898C	ACTIVE
96	2003 / FRD / ECONOLINE 350 20'	28	1FDSS34F93HB09285	516	118943	85	11	0	34	YES	7+1	D	NO	62897C	ACTIVE
97	2003 / FRD / ECONOLINE 350 20'	28	1FDSS34F23HB09286	517	114173	85	11	0	34	YES	7+1	D	NO	62896C	ACTIVE
98	2003 / FRD / ECONOLINE 350 20'	28	1FDSS34F23HB09287	518	106003	85	11	0	34	YES	7+1	D	NO	62895C	ACTIVE
99	2003 / FRD / ECONOLINE 350 20'	28	1FDSS34F43HB09288	519	91556	85	11	0	34	YES	7+1	D	NO	62899C	ACTIVE
100	2005/FRD/ADA RAISED ROOF VAN	14	1FTSS34P06HA04314	520	86593	95	9	0	53	YES	5+1	D	NO	RS05788	ACTIVE
101	2005/FRD/ADA RAISED ROOF VAN	14	1FTSS34P26HA04315	521	51647	95	9	0	53	YES	5+1	D	NO	RS05787	ACTIVE

**Public Transportation Management System**  
**Owned Rolling Stock Inventory**  
**Agency: Kitsap Transit**  
**Date: February 2014**

		VEH						REM.	REP. \$\$	ADA		FUEL	WSDOT		
	YEAR / MAKE / MODEL	CODE	V.I.N.	EQ#	LTD MILES	CONDITION	AGE	LIFE	(THOUSANDS)	ACCESS	SEATING	TYPE	TITLE (YES/NO)	LICENSE	STATUS
102	2005/FRD/ADA RAISED ROOF VAN	14	1FTSS34P46HA04316	522	163805	95	9	0	53	YES	5+1	D	NO	74393C	ACTIVE
103	2005/FRD/ADA RAISED ROOF VAN	14	1FTSS34P66HA04317	523	138452	95	9	0	53	YES	5+1	D	NO	74396C	ACTIVE
104	2005/FRD/ADA RAISED ROOF VAN	14	1FTSS34P86HA04318	524	169845	95	9	0	53	YES	5+1	D	NO	74394C	ACTIVE
105	2005/FRD/ADA RAISED ROOF VAN	14	1FTSS34PX6HA04319	525	166325	95	9	0	53	YES	5+1	D	NO	74389C	ACTIVE
106	2005/FRD/ADA RAISED ROOF VAN	14	1FTSS34P66HA04320	526	127232	95	9	0	53	YES	5+1	D	NO	74392C	ACTIVE
107	2005/FRD/ADA RAISED ROOF VAN	14	1FTSS34P86HA04321	527	148071	95	9	0	53	YES	5+1	D	NO	74390C	ACTIVE
108	2005/FRD/ADA RAISED ROOF VAN	14	1FTSS34PX6HA04322	528	140759	95	9	0	53	YES	5+1	D	NO	74397C	ACTIVE
109	2005/FRD/ADA RAISED ROOF VAN	14	1FTSS34P16HA04323	529	98727	85	9	0	53	YES	5+1	D	NO	74391C	ACTIVE
110	2004 / FRD / ECONOLINE 350 20'	28	1FDNE31P64HA55804	530	61477	85	8	0	34	NO	10	D	NO	RS04791	ACTIVE
111	2004 / FRD / ECONOLINE 350 20'	28	1FDNE31P84HA55805	531	90214	85	8	0	34	NO	10	D	NO	RS04821	ACTIVE
112	2004 / FRD / ECONOLINE 350 20'	13	1FDNE31PX4HA55806	532	69532	85	8	0	34	NO	10	D	NO	RS04801	ACTIVE
113	2004 / FRD / ECONOLINE 350 20'	28	1FDNE31P14HA55807	533	102035	85	8	0	34	NO	10	D	NO	RS04809	ACTIVE
114	2004 / FRD / ECONOLINE 350 20'	13	1FDNE31P34HA55808	534	29826	85	8	0	34	NO	10	D	NO	RS04798	ACTIVE
115	2004 / FRD / ECONOLINE 350 20'	13	1FDNE31P54HA55809	535	35755	85	8	0	34	NO	10	D	NO	RS04822	ACTIVE
116	2004 / FRD / ECONOLINE 350 20'	28	1FDNE31P14HA55810	536	100823	85	8	0	34	NO	10	D	NO	RS04799	ACTIVE
117	2004 / FRD / ECONOLINE 350 20'	13	1FDNE31P54HA55812	538	60728	85	8	0	34	NO	10	D	NO	RS04813	ACTIVE
118	2004 / FRD / ECONOLINE 350 20'	28	1FDNE31P74HA55813	539	181515	85	8	0	34	NO	10	D	NO	RS04793	ACTIVE
119	2004 / FRD / ECONOLINE 350 20'	14	1FDNE31P94HA55814	540	119086	85	8	0	34	NO	10	D	NO	RS04780	ACTIVE
120	2004 / FRD / ECONOLINE 350 20'	14	1FDNE31P04HA55815	541	48818	85	8	0	34	NO	10	D	NO	RS04810	ACTIVE
121	2004 / FRD / ECONOLINE 350 20'	14	1FDNE31P24HA55816	542	27330	85	8	0	34	NO	10	D	NO	RS04823	ACTIVE
122	2004 / FRD / ECONOLINE 350 20'	14	1FDNE31P44HA55817	543	47358	85	8	0	34	NO	10	D	NO	RS04802	ACTIVE
123	2004 / FRD / ECONOLINE 350 20'	14	1FDNE31P64HA55818	544	65165	85	8	0	34	NO	10	D	NO	RS04816	ACTIVE
124	2004 / FRD / ECONOLINE 350 20'	14	1FDNE31P84HA55819	545	46976	85	8	0	34	NO	10	D	NO	RS04819	ACTIVE
125	2004 / FRD / ECONOLINE 350 20'	14	1FDNE31P44HA55820	546	44392	85	8	0	34	NO	10	D	NO	RS04800	ACTIVE
126	2004 / FRD / ECONOLINE 350 20'	14	1FDNE31P64HA55821	547	23963	85	8	0	34	NO	10	D	NO	RS04817	ACTIVE
127	2004 / FRD / ECONOLINE 350 20'	14	1FDNE31P84HA55822	548	66465	85	8	0	34	NO	10	D	NO	RS04824	ACTIVE
128	2004 / FRD / ECONOLINE 350 20'	14	1FDNE31PX4HA55823	549	56919	85	8	0	34	NO	10	D	NO	RS04815	ACTIVE
129	2004 / FRD / ECONOLINE 350 20'	14	1FDNE31P14HA55824	550	42013	85	8	0	34	NO	10	D	NO	RS04783	ACTIVE
130	2004 / FRD / ECONOLINE 350 20'	14	1FDNE31P34HA55825	551	42350	85	8	0	34	NO	10	D	NO	RS04781	ACTIVE
131	2004 / FRD / ECONOLINE 350 20'	14	1FDNE31P54HA55826	552	54610	85	8	0	34	NO	10	D	NO	RS04814	ACTIVE
132	2004 / FRD / ECONOLINE 350 20'	14	1FDNE31P74HA55827	553	42924	85	8	0	34	NO	10	D	NO	RS04825	ACTIVE
133	2004 / FRD / ECONOLINE 350 20'	14	1FDNE31P94HA55828	554	17528	85	8	0	34	NO	10	D	NO	RS04811	ACTIVE
134	2004 / FRD / ECONOLINE 350 20'	14	1FDNE31P04HA55829	555	73900	85	8	0	34	NO	10	D	NO	RS04826	ACTIVE
135	2004 / FRD / ECONOLINE 350 20'	14	1FDNE31P74HA55830	556	47344	85	8	0	34	NO	10	D	NO	RS04807	ACTIVE
136	2004 / FRD / ECONOLINE 350 20'	14	1FDNE31P94HA55831	557	65536	85	8	0	34	NO	10	D	NO	RS04812	ACTIVE
137	2004 / FRD / ECONOLINE 350 20'	14	1FDNE31P04HA55832	558	58842	85	8	0	34	NO	10	D	NO	RS04818	ACTIVE
138	2004 / FRD / ECONOLINE 350 20'	14	1FDNE31P24HA55833	559	64680	85	8	0	34	NO	10	D	NO	RS04782	ACTIVE
139	2004 / FRD / ECONOLINE 350 20'	14	1FDNE31P44HA55834	560	132812	85	8	0	34	NO	10	D	NO	RS04784	ACTIVE
140	2004 / FRD / ECONOLINE 350 20'	14	1FDNE31P64HA55835	561	79985	85	8	0	34	NO	10	D	NO	RS04808	ACTIVE
141	2004 / FRD / ECONOLINE 350 20'	14	1FDNE31P84HA55836	562	40869	85	8	0	34	NO	10	D	NO	RS04828	ACTIVE
142	2004 / FRD / ECONOLINE 350 20'	14	1FDNE31PX4HA55837	563	89319	85	8	0	34	NO	10	D	NO	RS04806	ACTIVE
143	2004 / FRD / ECONOLINE 350 20'	14	1FDSS31P74HA55838	564	50348	85	8	0	34	NO	10	D	NO	RS04785	ACTIVE
144	2004 / FRD / ECONOLINE 350 20'	14	1FDSS31P94HA55839	565	37796	85	8	0	34	NO	10	D	NO	RS04786	ACTIVE
145	2004 / FRD / ECONOLINE 350 20'	13	1FDSS31P54HA55840	566	125592	85	8	0	34	NO	10	D	NO	RS04787	ACTIVE
146	2004 / FRD / ECONOLINE 350 20'	13	1FDSS31P74HA55841	567	63923	85	8	0	34	NO	10	D	NO	RS04778	ACTIVE
147	2004 / FRD / ECONOLINE 350 20'	13	1FDSS31P94HA55842	568	80017	85	8	0	34	NO	13	D	NO	RS04827	ACTIVE
148	2004 / FRD / ECONOLINE 350 20'	13	1FDSS31P04HA55843	569	41209	85	8	0	34	NO	13	D	NO	RS04779	ACTIVE
149	2004 / FRD / CLUB WAGON	13	1FDNE31P04HB40749	570	82611	85	8	0	34	NO	10	D	NO	RS05098	ACTIVE
150	2004 / FRD / CLUB WAGON	13	1FDNE31P74HB40750	571	124688	85	8	0	34	NO	10	D	NO	RS05099	ACTIVE
151	2004 / FRD / CLUB WAGON	13	1FDNE31P94HB40751	572	65251	85	8	0	34	NO	10	D	NO	RS05100	ACTIVE
152	2004 / FRD / CLUB WAGON	13	1FDNE31P04HB40752	573	58869	85	8	0	34	NO	10	D	NO	RS05101	ACTIVE
153	2004 / FRD / CLUB WAGON	13	1FDNE31P24HB40753	574	46454	85	8	0	34	NO	10	D	NO	RS05102	ACTIVE
154	2004 / FRD / CLUB WAGON	13	1FDNE31P44HB40754	575	92714	85	8	0	34	NO	10	D	NO	RS05103	ACTIVE
155	2004 / FRD / CLUB WAGON	13	1FDNE31P64HB40755	576	116218	85	8	0	34	NO	10	D	NO	RS05104	ACTIVE



**Public Transportation Management System**  
**Owned Rolling Stock Inventory**  
**Agency: Kitsap Transit**  
**Date: February 2014**

		VEH					REM.	REP. \$\$	ADA		FUEL	WSDOT			
	YEAR / MAKE / MODEL	CODE	V.I.N.	EQ#	LTD MILES	CONDITION	AGE	LIFE	(THOUSANDS)	ACCESS	SEATING	TYPE	TITLE (YES/NO)	LICENSE	STATUS
156	2004 / FRD / CLUB WAGON	13	1FDNE31P64HB40756	577	66290	85	8	0	34	NO	10	D	NO	RS05105	ACTIVE
157	2004 / FRD / CLUB WAGON	13	1FDNE31P84HB40757	578	105933	85	8	0	34	NO	10	D	NO	RS05106	ACTIVE
158	2004 / FRD / CLUB WAGON	13	1FDNE31P14HB40758	579	44821	85	8	0	34	NO	10	D	NO	RS05107	ACTIVE
159	2004 / FRD / CLUB WAGON	13	1FDNE31P34HB40759	580	59953	85	8	0	34	NO	10	D	NO	RS05108	ACTIVE
160	2004 / FRD / CLUB WAGON	13	1FDNE31PX4HB40760	581	54846	85	8	0	34	NO	10	D	NO	RS15109	ACTIVE
161	2004 / FRD / CLUB WAGON	13	1FDNE31P14HB40761	582	35605	85	8	0	34	NO	10	D	NO	RS05110	ACTIVE
162	2006 / FRD ECONONLINE 350 VAN 20'	13	1FDNE31PX6HA09847	583	57288	90	6	0	34	NO	10	D	NO	RS05665	ACTIVE
163	2006 / FRD ECONONLINE 350 VAN 20'	13	1FDNE31P16HA09848	584	73541	90	6	0	34	NO	10	D	NO	RS05666	ACTIVE
164	2006 / FRD ECONONLINE 350 VAN 20'	13	1FDNE31P36HA09849	585	83576	90	6	0	34	NO	10	D	NO	RS05672	ACTIVE
165	2006 / FRD ECONONLINE 350 VAN 20'	13	1FDNE31PX6HA09850	586	74943	90	6	0	34	NO	10	D	NO	RS05667	ACTIVE
166	2006 / FRD ECONONLINE 350 VAN 20'	13	1FDNE31P16HA09851	587	51180	90	6	0	34	NO	10	D	NO	RS05673	ACTIVE
167	2006 / FRD ECONONLINE 350 VAN 20'	13	1FDNE31P36HA09852	588	103100	90	6	0	34	NO	10	D	NO	RS05669	ACTIVE
168	2006 / FRD ECONONLINE 350 VAN 20'	13	1FDNE31P56HA09853	589	77741	90	6	0	34	NO	10	D	NO	RS05668	ACTIVE
169	2006 / FRD ECONONLINE 350 VAN 20'	13	1FDNE31P76HA09854	590	56780	90	6	0	34	NO	10	D	NO	RS05671	ACTIVE
170	2006 / FRD ECONONLINE 350 VAN 20'	13	1FDNE31P86HA09846	591	76700	90	6	0	34	NO	10	D	NO	RS05675	ACTIVE
171	2006 / FRD ECONONLINE 350 VAN 20'	14	1FDNE31P86HA09847	592	69204	90	6	0	34	NO	11	D	NO	RS05670	ACTIVE
171	2006 / FRD ECONONLINE 350 VAN 20'	13	1FDNE31P26HA09857	593	27102	90	6	0	34	NO	10	D	NO	RS05674	ACTIVE
172	2006 / FRD ECONONLINE 350 VAN 20'	13	1FDNE31P46HA09858	594	57610	90	6	0	34	NO	10	D	NO	RS05676	ACTIVE
173	2006 / FRD ECONONLINE 350 VAN 20'	13	1FDNE31P46HA09858	595	54137	90	6	0	34	NO	10	D	NO	RS05677	ACTIVE
174	2006 FORD E31 CLUB VAN	13	1FDNE31PX6DA36943	596	66367	90	6	0	34	NO	10	D	NO	RS06037	ACTIVE
175	2006 FORD E31 CLUB VAN	13	1FDNE31P36DA36945	597	73733	90	6	0	34	NO	10	D	NO	RS06038	ACTIVE
176	2006 FORD E31 CLUB VAN	13	1FDNE31P16DA36944	598	58166	90	6	0	34	NO	10	D	NO	RS06098	ACTIVE
177	2006 FORD E31 CLUB VAN	13	1FDNE31P86DA36942	599	29859	90	6	0	34	NO	10	D	NO	RS06099	ACTIVE
178	2006 FORD E31 CLUB VAN	13	1FDNE31P96DA36948	600	61360	90	6	0	34	NO	10	D	NO	RS06112	ACTIVE
179	2006 FORD E31 CLUB VAN	13	1FDNE31P96DA36951	601	57836	90	6	0	34	NO	10	D	NO	RS06113	ACTIVE
180	2006 FORD E31 CLUB VAN	13	1FDNE31P76DA36950	602	36955	90	6	0	34	NO	10	D	NO	RS06116	ACTIVE
181	2006 FORD E31 CLUB VAN	13	1FDNE31P76DA36947	603	48246	90	6	0	34	NO	10	D	NO	RS06114	ACTIVE
182	2006 FORD E31 CLUB VAN	13	1FDNE31P56DA36946	604	54100	90	6	0	34	NO	10	D	NO	RS06115	ACTIVE
183	2006 FORD E31 CLUB VAN	13	1FDNE31P06DA36949	605	27403	90	6	0	34	NO	10	D	NO	RS06118	ACTIVE
184	2006 FORD E31 CLUB VAN	13	1FDNE31P26DA36953	606	86295	90	6	0	34	NO	10	D	NO	RS06117	ACTIVE
185	2006 FORD E31 CLUB VAN	13	1FDNE31P46DA36954	607	36469	90	6	0	34	NO	10	D	NO	RS06120	ACTIVE
186	2006 FORD E31 CLUB VAN	13	1FDNE31P06DA36952	608	44080	90	6	0	34	NO	10	D	NO	RS06119	ACTIVE
187	2006 FORD E31 CLUB VAN	13	1FDNE31P56DB02363	609	15292	90	6	0	34	NO	10	D	NO	RS06557	ACTIVE
188	2006 FORD E31 CLUB VAN	14	1FDNE31P86DB39052	610	52748	90	6	0	34	NO	10	D	NO	RS06579	ACTIVE
189	2006 FORD E31 CLUB VAN	14	1FDNE31P46DB39050	611	44674	90	6	0	34	NO	10	D	NO	RS06578	ACTIVE
190	2006 FORD E31 CLUB VAN	14	1FDNE31P66DB39048	612	59742	90	6	0	34	NO	10	D	NO	RS06580	ACTIVE
191	2006 FORD E31 CLUB VAN	14	1FDNE31P66DB39051	613	32428	90	6	0	34	NO	10	D	NO	RS06581	ACTIVE
192	2006 FORD E31 CLUB VAN	14	1FDNE31PX6DB39053	614	30909	90	6	0	34	NO	10	D	NO	RS06582	ACTIVE
193	2006 FORD E31 CLUB VAN	14	1FDNE31P36DB39055	615	45363	90	6	0	34	NO	10	D	NO	RS06575	ACTIVE
194	2006 FORD E31 CLUB VAN	14	1FDNE31P86DB39049	616	14253	90	6	0	34	NO	10	D	NO	RS06574	ACTIVE
195	2006 FORD E31 CLUB VAN	14	1FDNE31P16DB39054	617	43513	90	6	0	34	NO	10	D	NO	XXXX	ACTIVE
196	2006 FORD E31 CLUB VAN	14	1FDNE31P56DB39056	618	21440	90	6	0	34	NO	10	D	NO	RS06577	ACTIVE
197	2006 FORD E31 CLUB VAN	14	1FDNE31P76DB39057	619	38585	90	6	0	34	NO	10	D	NO	RS06584	ACTIVE
198	2006 FORD E31 CLUB VAN	14	1FDNE31P06DB39059	620	42762	90	6	0	34	NO	10	D	NO	RS06585	ACTIVE
199	2006 FORD E31 CLUB VAN	14	1FDNE31P96DB39058	621	41884	90	6	0	34	NO	10	D	NO	RS06583	ACTIVE
200	2008 FORD E31 CLUB VAN	13	1FDNE31L48DB40117	622	16335	90	4	0	34	NO	10	G	NO	RS07439	ACTIVE
201	2008 FORD E31 CLUB VAN	13	1FDNE31L68DB40118	623	27360	90	4	0	34	NO	10	G	NO	RS07438	ACTIVE
202	2008 FORD E31 CLUB VAN	13	1FDNE31L88DB40119	624	81182	90	4	0	34	NO	10	G	NO	RS07436	ACTIVE
203	2008 FORD E31 CLUB VAN	13	1FDNE31L48DB40120	625	37579	90	4	0	34	NO	10	G	NO	RS07440	ACTIVE
204	2008 FORD E31 CLUB VAN	13	1FDNE31L68DB40121	626	26256	90	4	0	34	NO	10	G	NO	RS07437	ACTIVE
205	2008 FORD E31 CLUB VAN	13	1FDNE31L88DB40122	627	45479	90	4	0	34	NO	10	D	NO	RS07443	ACTIVE
206	2008 FORD E31 CLUB VAN	13	1FDNE31LX8DB40123	628	49123	90	4	0	34	NO	10	D	NO	RS07442	ACTIVE
207	2008 FORD E31 CLUB VAN	13	1FDNE31L18DB40124	629	51095	90	4	0	34	NO	10	D	NO	RS07445	ACTIVE
208	2008 FORD E31 CLUB VAN	13	1FDNE31L38DB40125	630	49847	90	4	0	34	NO	10	D	NO	RS07441	ACTIVE

**Public Transportation Management System**  
**Owned Rolling Stock Inventory**  
**Agency: Kitsap Transit**  
**Date: February 2014**

		VEH					REM.	REP. \$\$	ADA		FUEL	WSDOT			
	YEAR / MAKE / MODEL	CODE	V.I.N.	EQ#	LTD MILES	CONDITION	AGE	LIFE	(THOUSANDS)	ACCESS	SEATING	TYPE	TITLE (YES/NO)	LICENSE	STATUS
209	2008 FORD E31 CLUB VAN	13	1FDNE31L58DB40126	631	90813	90	4	0	34	NO	10	D	NO	RS07444	ACTIVE
210	2000 / INT / AERO ELITE 270	4	1HVBEABM41H351734	707	308459	75	12	0	120	YES	23+2	D	NO	56721C	ACTIVE
211	2000 / INT / AERO ELITE 270	4	1HVBEABM01H351746	709	323508	75	12	0	120	YES	23+2	D	NO	56724C	ACTIVE
212	2000 / INT / AERO ELITE 270	4	1HVBEABMX1H351740	710	303203	75	12	0	120	YES	23+2	D	NO	56725C	ACTIVE
213	2000 / INT / AERO ELITE 270	4	1HVBEABM21H351747	714	326649	75	12	0	120	YES	23+2	D	NO	56745C	ACTIVE
214	2000 / INT / AERO ELITE 270	4	1HVBEABM41H351748	716	313091	75	12	0	120	YES	23+2	D	NO	56747C	ACTIVE
215	2000 / INT / AERO ELITE 270	4	1HVBEABM91H351745	719	294427	75	12	0	120	YES	23+2	D	NO	56753C	ACTIVE
216	2003 / GIL / GILLIG 40'	1	15GDD271531111814	730	270816	85	9	1	400	YES	44+2	D	NO	62868C	ACTIVE
217	2003 / GIL / GILLIG 40'	1	15GDD271731111815	731	258957	85	9	1	400	YES	44+2	D	NO	62870C	ACTIVE
218	2003 / GIL / GILLIG 40'	1	15GDD271931111816	732	300088	85	9	1	400	YES	44+2	D	NO	62871C	ACTIVE
219	2003 / GIL / GILLIG 40'	1	15GDD271031111817	733	295435	85	9	1	400	YES	44+2	D	NO	62872C	ACTIVE
220	2003 / GIL / GILLIG 40'	1	15GDD271231111818	734	293125	85	9	1	400	YES	44+2	D	NO	62873C	ACTIVE
221	2003 / GIL / GILLIG 40'	1	15GDD271431111819	735	285203	85	9	1	400	YES	44+2	D	NO	62874C	ACTIVE
222	2003 / GIL / GILLIG 40'	1	15GDD271031111820	736	311207	85	9	1	400	YES	44+2	D	NO	62876C	ACTIVE
223	2003 / GIL / GILLIG 40'	1	15GDD271231111821	737	328166	85	9	1	400	YES	44+2	D	NO	62877C	ACTIVE
224	2003 / GIL / GILLIG 40'	1	15GDD271631111823	739	245233	85	9	1	400	YES	44+2	D	NO	62879C	ACTIVE
225	2003 / GIL / GILLIG 40'	1	15GDD271831111824	740	262530	85	9	1	400	YES	44+2	D	NO	62883C	ACTIVE
226	2003 / GIL / GILLIG 40'	1	15GDD271X31111825	741	286924	85	9	1	400	YES	44+2	D	NO	62885C	ACTIVE
227	2003 / GIL / GILLIG 40'	1	15GDD271131111826	742	251719	85	9	1	400	YES	44+2	D	NO	62886C	ACTIVE
228	2003 / GIL / GILLIG 40'	1	15GDD271331111827	743	267085	85	9	1	400	YES	44+2	D	NO	62887C	ACTIVE
229	2003 / GIL / GILLIG 40'	1	156DD271531111828	744	333300	85	9	1	400	YES	44+2	D	NO	62888C	ACTIVE
230	2003 / GIL / GILLIG 40'	1	15GDD271731111829	745	239418	85	9	1	400	YES	44+2	D	NO	62884C	ACTIVE
231	2003 / GIL / GILLIG 40'	1	15GDD271331111830	746	291247	85	9	1	400	YES	44+2	D	NO	62894C	ACTIVE
232	2003 / GIL / GILLIG 40'	1	15GDD271531111831	747	270426	85	9	1	400	YES	44+2	D	NO	62892C	ACTIVE
233	2003 / GIL / GILLIG 35'	2	15GGD271233073522	750	295981	85	9	1	400	YES	32+2	D	NO	62891C	ACTIVE
234	2003 / GIL / GILLIG 35'	2	15GGD271431073523	751	334906	85	9	1	400	YES	32+2	D	NO	62893C	ACTIVE
235	2004 / GIL / GILLIG LOW FLOOR 35'	2	15GGB291041074091	752	306771	85	8	2	400	YES	32+2	D	NO	70433C	ACTIVE
236	2004 / GIL / GILLIG LOW FLOOR 35'	2	15GGB291241074092	753	354579	85	8	2	400	YES	32+2	D	NO	70434C	ACTIVE
237	2004 / GIL / GILLIG LOW FLOOR 35'	2	15GGB291441074093	754	387830	85	8	2	400	YES	32+2	D	NO	70435C	ACTIVE
238	2004 / GIL / GILLIG LOW FLOOR 35'	2	15GGB291641074094	755	332339	85	8	2	400	YES	32+2	D	NO	70436C	ACTIVE
239	2004 / GIL / GILLIG LOW FLOOR 35'	2	15GGB291841074095	756	328677	85	8	2	400	YES	32+2	D	NO	70437C	ACTIVE
240	2004 / GIL / GILLIG LOW FLOOR 35'	2	15GGB291X41074096	757	359361	85	8	2	400	YES	32+2	D	NO	70438C	ACTIVE
241	2004 / GIL / GILLIG LOW FLOOR 35'	2	15GGB291141074097	758	372118	85	8	2	400	YES	32+2	D	NO	70439C	ACTIVE
242	2004 / GIL / GILLIG LOW FLOOR 35'	2	15GGB291341074098	759	315004	85	8	2	400	YES	32+2	D	NO	70440C	ACTIVE
243	2004 / GIL / GILLIG LOW FLOOR 35'	2	15GGB291541074099	760	330662	85	8	2	400	YES	32+2	D	NO	70441C	ACTIVE
244	2004 / GIL / GILLIG LOW FLOOR 35'	2	15GGB291841074100	761	415228	85	8	2	400	YES	32+2	D	NO	70442C	ACTIVE
245	2005 / GIL / GILLIG LOW FLOOR 35'	2	15GGB291851074101	762	300976	85	7	3	400	YES	32+2	D	NO	74334C	ACTIVE
246	2005 / GIL / GILLIG LOW FLOOR 35'	2	15GGB291X51074102	763	282539	85	7	3	400	YES	32+2	D	NO	74335C	ACTIVE
247	2005 / GIL / GILLIG LOW FLOOR 35'	2	15GGB291151074103	764	350101	85	7	3	400	YES	32+2	D	NO	74336C	ACTIVE
248	2005 / GIL / GILLIG LOW FLOOR 35'	2	15GGB291351074104	765	297462	85	7	3	400	YES	32+2	D	NO	74337C	ACTIVE
249	2005 / GIL / GILLIG LOW FLOOR 35'	2	15GGB291551074105	766	325023	85	7	3	400	YES	32+2	D	NO	74338C	ACTIVE
250	2004 / GIL / GILLIG LOW FLOOR 40'	1	15GGB291641074106	770	361226	85	8	2	400	YES	38+2	D	NO	70428C	ACTIVE
251	2004 / GIL / GILLIG LOW FLOOR 40'	1	15GGB291841074107	771	381621	85	8	2	400	YES	38+2	D	NO	70429C	ACTIVE
252	2004 / GIL / GILLIG LOW FLOOR 40'	1	15GGB291X41078108	772	389070	85	8	2	400	YES	38+2	D	NO	70430C	ACTIVE
253	2004 / GIL / GILLIG LOW FLOOR 40'	1	15GGB291141074109	773	294169	85	8	2	400	YES	38+2	D	NO	70431C	ACTIVE
254	2004 / GIL / GILLIG LOW FLOOR 40'	1	15GGB291841074110	774	248553	85	8	2	400	YES	38+2	D	NO	70443C	ACTIVE
255	2005 / GIL / GILLIG LOW FLOOR 40'	1	15GGD291851074111	775	286272	85	7	3	400	YES	38+2	D	NO	74339C	ACTIVE
256	2005 / GIL / GILLIG LOW FLOOR 40'	1	15GGD291X51074112	776	357873	85	7	3	400	YES	38+2	D	NO	74340C	ACTIVE
257	2005 / GIL / GILLIG LOW FLOOR 40'	1	15GGD291151074113	777	276836	85	7	3	400	YES	38+2	D	NO	74341C	ACTIVE
258	2005 / GIL / GILLIG LOW FLOOR 40'	1	15GGD291351074114	778	263860	85	7	3	400	YES	38+2	D	NO	74342C	ACTIVE
259	2005 / GIL / GILLIG LOW FLOOR 40'	1	15GGD291551074115	779	293026	85	7	3	400	YES	38+2	D	NO	74343C	ACTIVE
260	1999 / FRD / E450 SUPER DUTY	4	1FDXE40F6XHC10346	920	341624	80	15	0	95	YES	13+3	D	NO	RS03285	ACTIVE
261	1999 / FRD / E450 SUPER DUTY	4	1FDXE40FXXHC04713	943	337637	80	15	0	95	YES	13+3	D	NO	RS03334	ACTIVE
262	2002 / FRD / ELDORADO AEROTECH 22'	4	1FDXE45F22HB59235	955	340712	80	12	0	95	YES	10+2	D	NO	62796C	ACTIVE

**Public Transportation Management System**  
**Owned Rolling Stock Inventory**  
**Agency: Kitsap Transit**  
**Date: February 2014**

		VEH					REM.	REP. \$\$	ADA		FUEL	WSDOT			
	YEAR / MAKE / MODEL	CODE	V.I.N.	EQ#	LTD MILES	CONDITION	AGE	LIFE	(THOUSANDS)	ACCESS	SEATING	TYPE	TITLE (YES/NO)	LICENSE	STATUS
263	2002 / FRD / ELDORADO AEROTECH 22'	4	1FDXE45F42HB59236	956	337991	80	12	0	95	YES	10+2	D	NO	62797C	ACTIVE
264	2002 / FRD / ELDORADO AEROTECH 22'	4	1FDXE45F62HB59237	957	335636	80	12	0	95	YES	10+2	D	NO	62798C	ACTIVE
265	2002 / FRD / ELDORADO AEROTECH 22'	4	1FDXE45F82HB59238	958	322491	80	12	0	95	YES	10+2	D	NO	62799C	ACTIVE
266	2002 / FRD / ELDORADO AEROTECH 22'	4	1FDXE45FX2HB59239	959	324767	80	12	0	95	YES	10+2	D	NO	62800C	ACTIVE
267	2002 / FRD / ELDORADO AEROTECH 22'	4	1FDXE45F62HB59240	960	334468	80	12	0	95	YES	10+2	D	NO	62810C	ACTIVE
268	2002 / FRD / ELDORADO AEROTECH 22'	4	1FDXE45F82HB59241	961	319968	80	12	0	95	YES	10+2	D	NO	62809C	ACTIVE
269	2002 / FRD / ELDORADO AEROTECH 22'	4	1FDXE45FX2HB59242	962	350128	80	12	0	95	YES	10+2	D	NO	62830C	ACTIVE
270	2002 / FRD / ELDORADO AEROTECH 22'	4	1FDXE45F12HB59243	963	335088	80	12	0	95	YES	10+2	D	NO	62808C	ACTIVE
271	2002 / FRD / ELDORADO AEROTECH 22'	4	1FDXE45F32HB59244	964	326503	80	12	0	95	YES	10+2	D	NO	62820C	ACTIVE
272	2002 / FRD / ELDORADO AEROTECH 22'	4	1FDXE45F52HB59245	965	336875	80	12	0	95	YES	10+2	D	NO	62812C	ACTIVE
273	2002 / FRD / ELDORADO AEROTECH 22'	4	1FDXE45F72HB59246	966	345207	80	12	0	95	YES	10+2	D	NO	62811C	ACTIVE
274	2002 / FRD / ELDORADO AEROTECH 22'	4	1FDXE45F92HB59247	967	339505	80	12	0	95	YES	10+2	D	NO	62807C	ACTIVE
275	2002 / FRD / ELDORADO AEROTECH 22'	4	1FDXE45F02HB59248	968	328243	85	12	0	95	YES	10+2	D	NO	62821C	ACTIVE
276	2002 / FRD / ELDORADO AEROTECH 22'	4	1FDXE45FX2HB59256	969	350952	85	12	0	95	YES	10+2	D	NO	62831C	ACTIVE
277	2003 / FRD / ELDORADO AEROTECH 26'	4	1FDXE45F33HB39285	970	188122	85	9	0	100	YES	21+2	D	NO	67035C	ACTIVE
278	2003 / FRD / ELDORADO AEROTECH 26'	4	1FDXE45F53HB39286	971	182531	85	9	0	100	YES	21+2	D	NO	67036C	ACTIVE
279	2002 / FRD / ELDORADO AEROTECH 24'	4	1FDXE45F22HB75838	978	283352	85	10	0	115	YES	16+2	D	NO	62826C	ACTIVE
280	2003 / FRD / ELDORADO AEROTECH 26'	4	1FDXE45FX3HB39283	979	267920	85	9	0	115	YES	21+2	D	NO	67037C	ACTIVE
281	2003 / FRD / ELDORADO AEROTECH 26'	4	1FDXE45F13HB39284	980	287083	85	9	0	115	YES	21+2	D	NO	67038C	ACTIVE
282	2008 /FRD/ STARTRANS SENATOR 22'	4	1FD4E45P68DA65497	1000	161367	90	4	0	90	YES	10+3	D	NO	86755C	ACTIVE
283	2008 /FRD/ STARTRANS SENATOR 22'	4	1FD4E45P88DA65498	1001	177375	90	4	0	90	YES	10+3	D	NO	86759C	ACTIVE
284	2008 /FRD/ STARTRANS SENATOR 22'	4	1FD4E45PX8DA65499	1002	169026	90	4	0	90	YES	10+3	D	NO	86763C	ACTIVE
285	2008 /FRD/ STARTRANS SENATOR 22'	4	1FD4E45P28DA65500	1003	159833	90	4	0	90	YES	10+3	D	NO	86757C	ACTIVE
286	2008 /FRD/ STARTRANS SENATOR 22'	4	1FD4E45P48DA65501	1004	170673	90	4	0	90	YES	10+3	D	NO	86764C	ACTIVE
287	2008 /FRD/ STARTRANS SENATOR 22'	4	1FD4E45P68DA65502	1005	171792	90	4	0	90	YES	10+3	D	NO	86754C	ACTIVE
288	2008 /FRD/ STARTRANS SENATOR 22'	4	1FD4E45P88DA65503	1006	170288	90	4	0	90	YES	10+3	D	NO	86760C	ACTIVE
289	2008 /FRD/ STARTRANS SENATOR 22'	4	1FD4E45PX8DA65504	1007	169210	90	4	0	90	YES	10+3	D	NO	86765C	ACTIVE
290	2008 /FRD/ STARTRANS SENATOR 22'	4	1FD4E45P18DA65505	1008	157721	90	4	0	90	YES	10+3	D	NO	86766C	ACTIVE
291	2008 /FRD/ STARTRANS SENATOR 22'	4	1FD4E45P38DA65506	1009	168778	90	4	0	90	YES	10+3	D	NO	86761C	ACTIVE
292	2008 /FRD/ STARTRANS SENATOR 22'	4	1FD4E45P58DA65507	1010	161485	90	4	0	90	YES	10+3	D	NO	86767C	ACTIVE
293	2008 /FRD/ STARTRANS SENATOR 22'	4	1FD4E45P78DA65508	1011	159927	90	4	0	90	YES	10+3	D	NO	86768C	ACTIVE
294	2008 /FRD/ STARTRANS SENATOR 22'	4	1FD4E45P98DA65509	1012	172005	90	4	0	90	YES	10+3	D	NO	86762C	ACTIVE
295	2008 /FRD/ STARTRANS SENATOR 22'	4	1FD4E45P58DA65510	1013	175705	90	4	0	90	YES	10+3	D	NO	86758C	ACTIVE
296	2008 /FRD/ STARTRANS SENATOR 22'	4	1FD4E45P78DA65511	1014	155115	90	4	0	90	YES	10+3	D	NO	86756C	ACTIVE
297	2009 /FRD/SENATOR BUS 14"	4	1FD4E45P29DA39506	1015	130995	90	3	0	94	YES	12+6	D	NO	91641C	ACTIVE
298	2009 /FRD/SENATOR BUS 14"	4	1FD4E45P49DA39507	1016	129384	90	3	0	94	YES	12+6	D	NO	91631C	ACTIVE
299	2009 /FRD/SENATOR BUS 14"	4	1FD4E45P69DA39508	1017	122779	90	3	0	94	YES	12+6	D	NO	91640C	ACTIVE
300	2009 /FRD/SENATOR BUS 14"	4	1FD4E45P89DA39509	1018	129127	90	3	0	94	YES	12+6	D	NO	91633C	ACTIVE
301	2009 /FRD/SENATOR BUS 14"	4	1FD4E45P49DA39510	1019	126792	90	3	0	94	YES	12+6	D	NO	91627C	ACTIVE
302	2009 /FRD/SENATOR BUS 14"	4	1FD4E45P69DA39511	1020	113428	90	3	0	94	YES	12+6	D	NO	91630C	ACTIVE
303	2009 /FRD/SENATOR BUS 14"	4	1FD4E45P89DA39512	1021	119239	90	3	0	94	YES	12+6	D	NO	91642C	ACTIVE
304	2009 /FRD/SENATOR BUS 14"	4	1FD4E45PX9DA39513	1022	119120	90	3	0	94	YES	12+6	D	NO	91643C	ACTIVE
305	2009 /FRD/SENATOR BUS 14"	4	1FD4E45P19DA39514	1023	117738	90	3	0	94	YES	12+6	D	NO	91639C	ACTIVE
306	2009 /FRD/SENATOR BUS 14"	4	1FD4E45P39DA39515	1024	121511	90	3	0	94	YES	12+6	D	NO	91628C	ACTIVE
307	2009 /FRD/SENATOR BUS 14"	4	1FD4E45P59DA39516	1025	115393	90	3	0	94	YES	12+6	D	NO	91629C	ACTIVE
308	2009 FORD SENATOR BUS 17'	4	1FD4E45P79DA39503	1026	46769	90	3	0	100	YES	16+6	D	NO	91632C	ACTIVE
309	2009 FORD SENATOR BUS 17'	4	1FD4E45P99DA39504	1027	61383	90	3	0	100	YES	16+6	D	NO	91626C	ACTIVE
310	2009 FORD SENATOR BUS 17'	4	1FD4E45P09DA39505	1028	50659	90	3	0	100	YES	16+6	D	NO	91638C	ACTIVE
311	2013 CHEVY GOSHEN	11	1GB6G5BL4D1126344	1100	13644	90	1	6	90	YES	10+1	D	NO	A2728C	ACTIVE
312	2013 CHEVY GOSHEN	11	1GB6G5BL2D1127346	1101	18333	90	1	6	90	YES	10+1	D	NO	A2729C	ACTIVE
313	2013 CHEVY GOSHEN	11	1GB6G5BL7D1125253	1102	19935	90	1	6	90	YES	10+1	D	NO	A2730C	ACTIVE
314	2013 CHEVY GOSHEN	11	1GB6G5BL7D1125351	1103	17890	90	1	6	90	YES	10+1	D	NO	A3880C	ACTIVE
315	2013 CHEVY GOSHEN	11	1GB6G5BLXD1125599	1104	19978	90	1	6	90	YES	10+1	D	NO	A3881C	ACTIVE
316	2013 CHEVY GOSHEN	11	1GB6G5BL2D1126228	1105	20176	90	1	6	90	YES	10+1	D	NO	A3882C	ACTIVE

**Public Transportation Management System**  
**Owned Rolling Stock Inventory**  
**Agency: Kitsap Transit**  
**Date: February 2014**

		VEH					REM.	REP. \$\$	ADA		FUEL	WSDOT			
	YEAR / MAKE / MODEL	CODE	V.I.N.	EQ#	LTD MILES	CONDITION	AGE	LIFE	(THOUSANDS)	ACCESS	SEATING	TYPE	TITLE (YES/NO)	LICENSE	STATUS
317	2013 CHEVY GOSHEN	11	1GB6G5BLXD1126462	1106	21135	90	1	6	90	YES	10+1	D	NO	A3883C	ACTIVE
318	2013 CHEVY GOSHEN	11	1GB6G5BL7D1126743	1107	20224	90	1	6	90	YES	10+1	D	NO	A3884C	ACTIVE
319	2013 CHEVY GOSHEN	11	1GB6G5BL8D1127044	1108	16089	90	1	6	90	YES	10+1	D	NO	A3885C	ACTIVE
320	2013 CHEVY GOSHEN	11	1GB6G5BL9D1127389	1109	18549	90	1	6	90	YES	10+1	D	NO	A3886C	ACTIVE
321	2013 CHEVY GOSHEN	11	1GB6G5BL4D1130622	1110	19374	90	1	6	90	YES	10+1	D	NO	A3887C	ACTIVE
322	2010 TOYOTA SIENNA VAN	13	5TDKK4CC0AS302676	2000	19053	95	5	0	27	NO	7	G	NO	RS08104	ACTIVE
323	2010 TOYOTA SIENNA VAN	13	5TDKK4CC5AS303127	2001	33956	95	5	0	27	NO	7	G	NO	RS08105	ACTIVE
324	2010 TOYOTA SIENNA VAN	13	5TDKK4CC3AS303174	2002	50540	95	5	0	27	NO	7	G	NO	RS08106	ACTIVE
325	2010 TOYOTA SIENNA VAN	13	5TDKK4CC6AS303282	2003	45078	95	5	0	27	NO	7	G	NO	RS08107	ACTIVE
326	2010 TOYOTA SIENNA VAN	13	5TDKK4CC3AS303353	2004	25996	95	5	0	27	NO	7	G	NO	RS08108	ACTIVE
327	2010 TOYOTA SIENNA VAN	13	5TDKK4CC5AS303404	2005	43638	95	5	0	27	NO	7	G	NO	RS08109	ACTIVE
328	2010 TOYOTA SIENNA VAN	13	5TDKK4CC3AS302820	2006	28484	95	5	0	27	NO	7	G	NO	RS08099	ACTIVE
329	2010 TOYOTA SIENNA VAN	13	5TDKK4CCXAS302992	2007	42560	95	5	0	27	NO	7	G	NO	RS08098	ACTIVE
330	2010 TOYOTA SIENNA VAN	13	5TDKK4CC7AS303114	2008	36988	95	5	0	27	NO	7	G	NO	RS08100	ACTIVE
331	2010 TOYOTA SIENNA VAN	13	5TDKK4CC8AS303316	2009	29189	95	5	0	27	NO	7	G	NO	RS08101	ACTIVE
332	2010 TOYOTA SIENNA VAN	13	5TDKK4CC6AS303573	2010	28921	95	5	0	27	NO	7	G	NO	RS08102	ACTIVE
333	2010 TOYOTA SIENNA VAN	13	5TDKK4CC2AS303697	2011	63680	95	5	0	27	NO	7	G	NO	RS08103	ACTIVE
334	2010 TOYOTA SIENNA VAN	13	5TDKK4CC0AS303522	2012	68925	95	5	0	27	NO	7	G	NO	RS08097	ACTIVE
335	2010 TOYOTA SIENNA VAN	13	5TDKK4CC9AS302983	2013	78470	95	5	0	27	NO	7	G	NO	RS08096	ACTIVE
336	2010 TOYOTA SIENNA VAN	13	5TDKK4CC9AS303535	2014	45522	95	5	0	27	NO	7	G	NO	RS08095	ACTIVE
337	2010 TOYOTA SIENNA VAN	13	5TDKK4CC6AS303671	2015	37927	95	5	0	27	NO	7	G	NO	RS08094	ACTIVE
338	2010 TOYOTA SIENNA VAN	13	5TDKK4CC1AS303772	2016	50097	95	5	0	27	NO	7	G	NO	RS08093	ACTIVE
339	2010 TOYOTA SIENNA VAN	13	5TDKK4CC7AS303811	2017	28414	95	5	0	27	NO	7	G	NO	RS08110	ACTIVE
340	2010 TOYOTA SIENNA VAN	13	5TDKK4CC7AS304053	2018	38544	95	5	0	27	NO	7	G	NO	RS08140	ACTIVE
341	2010 TOYOTA SIENNA VAN	13	5TDKK4CC5AS304231	2019	77417	95	5	0	27	NO	7	G	NO	RS08139	ACTIVE
342	2010 TOYOTA SIENNA VAN	13	5TDKK4CCXAS304242	2020	36995	95	5	0	27	NO	7	G	NO	RS08138	ACTIVE
343	2010 TOYOTA SIENNA VAN	13	5TDKK4CC9AS304250	2021	64539	95	5	0	27	NO	7	G	NO	RS08137	ACTIVE
344	2010 TOYOTA SIENNA VAN	13	5TDKK4CC4AS304270	2022	26255	95	5	0	27	NO	7	G	NO	RS08136	ACTIVE
345	2010 TOYOTA SIENNA VAN	13	5TDKK4CC0AS304279	2023	48643	95	5	0	27	NO	7	G	NO	RS08135	ACTIVE
346	2010 TOYOTA SIENNA VAN	13	5TDKK4CC1AS301410	2024	26689	95	5	0	27	NO	7	G	NO	RS08141	ACTIVE
347	2010 TOYOTA SIENNA VAN	13	5TDKK4CC8AS301372	2025	65773	95	5	0	27	NO	7	G	NO	RS08142	ACTIVE
348	2010 TOYOTA SIENNA VAN	13	5TDKK4CC0AS301558	2026	52552	95	5	0	27	NO	7	G	NO	RS08143	ACTIVE
349	2010 TOYOTA SIENNA VAN	13	5TDKK4CC9AS301722	2027	26729	95	5	0	27	NO	7	G	NO	RS08144	ACTIVE
350	2010 TOYOTA SIENNA VAN	13	5TDKK4CC2AS304185	2028	22212	95	5	0	27	NO	7	G	NO	RS08145	ACTIVE
351	2010 TOYOTA SIENNA VAN	13	5TDKK4CC7AS301363	2029	38088	95	5	0	27	NO	7	G	NO	RS08146	ACTIVE
352	2010 TOYOTA SIENNA VAN	13	5TDKK4CC2AS301934	2030	38088	95	5	0	27	NO	7	G	NO	RS08129	ACTIVE
353	2010 TOYOTA SIENNA VAN	13	5TDKK4CC6AS302200	2031	40668	95	5	0	27	NO	7	G	NO	RS08130	ACTIVE
354	2010 TOYOTA SIENNA VAN	13	5TDKK4CC8AS301419	2032	27266	95	5	0	27	NO	7	G	NO	RS 8131	ACTIVE
355	2010 TOYOTA SIENNA VAN	13	5TDKK4CCXAS302460	2033	34520	95	5	0	27	NO	7	G	NO	RS 8132	ACTIVE
356	2010 TOYOTA SIENNA VAN	13	5TDKK4CC5AS301622	2034	32450	95	5	0	27	NO	7	G	NO	RS 8133	ACTIVE
357	2010 TOYOTA SIENNA VAN	13	5TDKK4CC2AS301707	2035	56769	95	5	0	27	NO	7	G	NO	RS08134	ACTIVE
358	2010 TOYOTA SIENNA VAN	13	5TDKK4CCXAS301440	2036	48195	95	5	0	27	NO	7	G	NO	RS08149	ACTIVE
359	2010 TOYOTA SIENNA VAN	13	5TDKK4CC2AD302470	2037	31924	95	5	0	27	NO	7	G	NO	RS08150	ACTIVE
360	2010 TOYOTA SIENNA VAN	13	5TDKK4CC5AS302706	2038	77219	95	5	0	27	NO	7	G	NO	RS08151	ACTIVE
361	2010 TOYOTA SIENNA VAN	13	5TDKK4CC7AS302626	2039	43407	95	5	0	27	NO	7	G	NO	RS08152	ACTIVE
362	2010 TOYOTA SIENNA VAN	13	5TDKK4CC5AS301989	2040	29916	95	5	0	27	NO	7	G	NO	RS08153	ACTIVE
363	2010 TOYOTA SIENNA VAN	13	5TDKK4CC6AS301998	2041	31428	95	5	0	27	NO	7	G	NO	RS08154	ACTIVE
364	2010 TOYOTA SIENNA VAN	13	5TDKK4CC8AS301971	2042	26167	95	5	0	27	NO	7	G	NO	RS08155	ACTIVE
365	2010 TOYOTA SIENNA VAN	13	5TDKK4CC6AS302567	2043	70604	95	5	0	27	NO	7	G	NO	RS08156	ACTIVE
366	2010 TOYOTA SIENNA VAN	13	5TDKK4CC3AS302686	2044	60101	95	5	0	27	NO	7	G	NO	RS 08157	ACTIVE
367	2010 TOYOTA SIENNA VAN	13	5TDKK4CC8AS302747	2045	78308	95	5	0	27	NO	7	G	NO	RS 08158	ACTIVE
368	2009 FORD350 VAN	13	1FDS331L59DA86680	2100	43159	95	5	0	36	NO	13	G	NO	RS08165	ACTIVE
369	2009 FORD 350 VAN	13	1FDSS31L09DA86683	2101	62951	95	5	0	36	NO	13	G	NO	RS08166	ACTIVE
370	2009 FORD 350 VAN	13	1FDS331L99DA86679	2102	54219	95	5	0	36	NO	13	G	NO	RS08164	ACTIVE

**Public Transportation Management System**  
**Owned Rolling Stock Inventory**  
**Agency: Kitsap Transit**  
**Date: February 2014**

		VEH					REM.	REP. \$\$	ADA		FUEL	WSDOT			
	YEAR / MAKE / MODEL	CODE	V.I.N.	EQ#	LTD MILES	CONDITION	AGE	LIFE	(THOUSANDS)	ACCESS	SEATING	TYPE	(YES/NO)	LICENSE	STATUS
371	2009 FORD 350 VAN	13	1FDSS31L79DA86681	2103	62275	95	5	0	36	NO	13	G	NO	RS08163	ACTIVE
372	2009 FORD 350 VAN	13	1FDSS31LX9DA86688	2104	59863	95	5	0	36	NO	13	G	NO	RS08167	ACTIVE
373	2009 FORD 350 VAN	13	1FDSS31L59DA86677	2105	52649	95	5	0	36	NO	13	G	NO	RS08173	ACTIVE
374	2009 FORD 350 VAN	13	1FDSS31L89DA866687	2106	76475	95	5	0	36	NO	13	G	NO	RS08176	ACTIVE
375	2009 FORD 350 VAN	13	1FDSS31L69DA86686	2107	34705	95	5	0	36	NO	13	G	NO	RS08180	ACTIVE
376	2009 FORD 350 VAN	13	1FDSS31L89DA86690	2108	36186	95	5	0	36	NO	13	G	NO	RS08177	ACTIVE
377	2009 FORD 350 VAN	13	1FDSS31L29DA866684	2109	16347	95	5	0	36	NO	13	G	NO	RS08175	ACTIVE
378	2009 FORD 350 VAN	13	1FDSS31L79DA86678	2110	18056	95	5	0	36	NO	13	G	NO	RS08184	ACTIVE
379	2009 FORD 350 VAN	13	1FDSS31L39DA86676	2111	31575	95	5	0	36	NO	13	G	NO	RS 08183	ACTIVE
380	2009 FORD 350 VAN	13	1FDSS31L39DA86693	2112	63513	95	5	0	36	NO	13	G	NO	RS 0811	ACTIVE
381	2009 FORD 350 VAN	13	1FDSS31L59DA86694	2113	24269	95	5	0	36	NO	13	G	NO	RS08188	ACTIVE
382	2009 FORD 350 VAN	13	1FDSS31L49DA86685	2114	8949	95	5	0	36	NO	13	G	NO	RS08189	ACTIVE
383	2009 FORD 350 VAN	13	1FDSS31LX9DA86691	2115	25700	95	5	0	36	NO	13	G	NO	RS 08190	ACTIVE
384	2009 FORD 350 VAN	13	1FDNE31L19DA86692	2116	34473	95	5	0	36	NO	13	G	NO	RS08194	ACTIVE
385	2009 FORD 350 VAN	13	1FDSS31L19DA86689	2117	44393	95	5	0	36	NO	13	G	NO	RS08193	ACTIVE
386	2009 FORD 350 VAN	13	1FDSS31L99DA86692	2118	22356	95	5	0	36	NO	13	G	NO	RS08217	ACTIVE
387	2009 FORD 350 VAN	13	1FDNE31L39DA86665	2119	79141	95	5	0	36	NO	11	G	NO	RS08187	ACTIVE
388	2009 FORD 350 VAN	13	1FDNE31L19DA86664	2120	21794	95	5	0	36	NO	10	G	NO	RS 08185	ACTIVE
389	2009 FORD 350 VAN	13	1FDNE31L79DA86670	2121	111202	95	5	0	36	NO	10	G	NO	RS08181	ACTIVE
390	2009 FORD 350 VAN	13	1FDNE31L99DA86668	2122	23975	95	5	0	36	NO	10	G	NO	RS 08178	ACTIVE
391	2009 FORD 350 VAN	13	1FDNE31L79DA86667	2123	17122	95	5	0	36	NO	10	G	NO	RS08179	ACTIVE
392	2009 FORD 350 VAN	13	1FDNE31L69DA86675	2124	21664	95	5	0	36	NO	10	G	NO	RS08174	ACTIVE
393	2009 FORD 350 VAN	13	1FDNE31L09DA86669	2125	60050	95	5	0	36	NO	10	G	NO	RS08169	ACTIVE
394	2009 FORD 350 VAN	13	1FDNE31L09DA86672	2126	23218	95	5	0	36	NO	10	G	NO	RS08168	ACTIVE
395	2009 FORD 350 VAN	13	1FDNE31L29DA86673	2127	13404	95	5	0	36	NO	10	G	NO	RS08171	ACTIVE
396	2009 FORD 350 VAN	13	1FDNE31L59DA86666	2128	9307	95	5	0	36	NO	10	G	NO	RS08170	ACTIVE
397	2009 FORD 350 VAN	13	1FDNE31L99DA86671	2129	43606	95	5	0	36	NO	10	G	NO	RS08161	ACTIVE
398	2009 FORD 350 VAN	13	1FDNE31L49DA86674	2130	42042	95	5	0	36	NO	10	G	NO	RS08162	ACTIVE
399	1994 MCI	1	1M8SDMTA5RP046289	6000	349919	75	20	0	70	NO	47	D	NO	97224C	ACTIVE
400	1994 MCI	1	1M8SDMTAXRP046658	6001	158110	75	20	0	70	NO	47	D	NO	97222C	ACTIVE
401	1994 MCI	1	1M8SDMTA4RP046669	6002	790326	75	20	0	70	NO	47	D	NO	97218C	ACTIVE
402	1994 MCI	1	1M8SDMTA2RP046699	6003	51173	75	20	0	70	NO	47	D	NO	97220C	ACTIVE
403	1994 MCI	1	1M8SDMTA5RP046731	6004	265072	75	20	0	70	NO	47	D	NO	97688C	ACTIVE
404	1994 MCI	1	1M8SDMTA9RP046733	6005	809220	75	20	0	70	NO	47	D	NO	97225C	ACTIVE
405	1994 MCI	1	1M8SDMTAXRP046756	6006	439310	75	20	0	70	NO	47	D	NO	97217C	ACTIVE
406	1994 MCI	1	1M8SDMTA0RP046782	6007	74126	75	20	0	70	NO	47	D	NO	97221C	ACTIVE
407	1994 MCI	1	1M8SDMTA1RP046788	6008	843330	75	20	0	70	NO	47	D	NO	97671C	ACTIVE
408	1995 MCI	1	1M8SDMTA0S9047081	6009	542866	75	19	0	70	NO	47	D	NO	97236C	ACTIVE
409	1995 MCI	1	1M8SDMTA2SP047115	6010	675470	75	19	0	70	NO	47	D	NO	97235C	ACTIVE
410	1995 MCI	1	1M8SDMTA6SP047120	6011	867729	75	19	0	70	NO	47	D	NO	97234C	ACTIVE
411	1995 MCI	1	1M8SDMTA9SP047127	6012	207338	75	19	0	70	NO	47	D	NO	97223C	ACTIVE
412	1995 MCI	1	1M8SDMTA9SP047130	6013	44443	75	19	0	70	NO	47	D	NO	97219C	ACTIVE
413	1995 MCI	1	1M8SDMTA6SP047134	6014	237906	75	19	0	70	NO	47	D	NO	97684C	ACTIVE
414	1995 MCI	1	1M8SDMTA9SP047337	6015	388963	75	19	0	70	NO	47	D	NO	97672C	ACTIVE
415	1995 MCI	1	1M8SDMTA8SP047748	6016	804986	75	19	0	70	NO	47	D	NO	97675C	ACTIVE
416	1995 MCI	1	1M8SDMTA8SP047751	6017	780359	75	19	0	70	NO	47	D	NO	97681C	ACTIVE
417	1996 MCI	1	1M8SDMTA0TP048183	6018	199974	75	18	0	70	NO	47	D	NO	97677C	ACTIVE
418	1996 MCI	1	1M8SDMTA3TP048310	6019	768496	75	18	0	70	NO	47	D	NO	97680C	ACTIVE
419	1996 MCI	1	1M8SDMTA9TP048702	6020	303269	75	18	0	70	NO	47	D	NO	97237C	ACTIVE
420	1996 MCI	1	1M8SDMTA4TP048705	6021	749425	75	18	0	70	NO	47	D	NO	97687C	ACTIVE
421	1996 MCI	1	1M8SDMTAXTP048708	6022	72565	75	18	0	70	NO	47	D	NO	97683C	ACTIVE
422	1996 MCI	1	1M8SDMTA5TP048714	6023	766376	75	18	0	70	NO	47	D	NO	97685C	ACTIVE
423	1997 MCI	1	1M8SDMTAXVP049764	6024	148743	75	17	0	70	NO	47	D	NO	97682C	ACTIVE
424	1997 MCI	1	1M8SDMTA0VP049787	6025	188962	75	17	0	70	NO	47	D	NO	97676C	ACTIVE

**Public Transportation Management System  
Owned Rolling Stock Inventory  
Agency: Kitsap Transit  
Date: February 2014**

		VEH					REM.	REP. \$\$	ADA		FUEL	WSDOT			
	YEAR / MAKE / MODEL	CODE	V.I.N.	EQ#	LTD MILES	CONDITION	AGE	LIFE	(THOUSANDS)	ACCESS	SEATING	TYPE	TITLE (YES/NO)	LICENSE	STATUS
425	1997 MCI	1	1M8SDMTA2VP049810	6026	791808	75	17	0	70	NO	47	D	NO	97673C	ACTIVE
426	1997 MCI	1	1M8SDMTA4VP049811	6027	152990	75	17	0	70	NO	47	D	NO	97674C	ACTIVE
427	1997 MCI	1	1M8SDMPA4VP049706	6028	528148	75	17	0	70	NO	47	D	NO	A0485C	ACTIVE
428	1997 MCI	1	1M8SDMPA8VP049708	6029	672672	75	17	0	70	NO	47	D	NO	A0487C	ACTIVE
429	1998 MCI	1	1M8SDMTA0WP050505	6030	511128	75	16	0	70	NO	47	D	NO	A0482C	ACTIVE
430	1998 MCI	1	1M8SDMTA2WP050506	6031	458638	75	16	0	70	NO	47	D	NO	98855C	ACTIVE
431	1999 MCI	1	1M8SDMTA9XP051590	6032	420847	75	15	0	70	NO	47	D	NO	A0481C	ACTIVE
432	1999 MCI	1	1M8SDMTA1XP052331	6033	508601	75	15	0	70	NO	47	D	NO	A0483C	ACTIVE
433	2001 MCI	1	1M8SDMPA41P053748	6034	334437	75	13	0	70	NO	47	D	NO	A0486C	ACTIVE
434	2001 MCI	1	1M8SDMPA21P053750	6035	429739	75	13	0	70	NO	47	D	NO	A0484C	ACTIVE
435	1993 MCI	1	1M8MDM7A2PP045486	6036	381125	75	21	0	70	NO	47	D	NO	A2707C	ACTIVE
436	1993 MCI	1	1M8MDM7A8PP045489	6037	401082	75	21	0	70	NO	47	D	NO	A2708C	ACTIVE
437	1993 MCI	1	1M8MDM7A6PP045488	6038	383386	75	21	0	70	NO	47	D	NO	A2705C	ACTIVE
438	2010 ARBOC CHEVY BUS 13'	11	1GB9G5A69A1105056	7000	97747	85	4	2	165	YES	21+3	D	NO	95022C	ACTIVE
439	2010 ARBOC CHEVY BUS 13'	11	1GB9G5A65A1104843	7001	107734	85	4	2	165	YES	21+3	D	NO	95590C	ACTIVE
440	2010 ARBOC CHEVY BUS 13'	11	1GB9G5A62A1105660	7002	136937	85	4	2	165	YES	21+3	D	NO	95587C	ACTIVE
441	2010 ARBOC CHEVY BUS 13'	11	1GB9G5A60A1105964	7003	127385	85	4	2	165	YES	21+3	D	NO	95591C	ACTIVE
442	2010 ARBOC CHEVY BUS 13'	11	1GB9G5A63A1105604	7004	111360	85	4	2	165	YES	21+3	D	NO	95030C	ACTIVE
443	2010 ARBOC CHEVY BUS 13'	11	1GB9G5A65A1105491	7005	117548	85	4	2	165	YES	21+3	D	NO	95031C	ACTIVE
444	2010 ARBOC CHEVY BUS 13'	11	1GB9G5A64A1106096	7006	12831	85	4	2	165	YES	21+3	D	NO	95024C	ACTIVE
445	2010 ARBOC CHEVY BUS 13'	11	1GB9G5A65A1106043	7007	133257	85	4	2	165	YES	21+3	D	NO	95023C	ACTIVE
446	2010 ARBOC CHEVY BUS 13'	11	1GB9G5A64A1105532	7008	125071	85	4	2	165	YES	21+3	D	NO	95032C	ACTIVE
447	2010 ARBOC CHEVY BUS 13'	11	1GB9G5A62A1105707	7009	134910	85	4	2	165	YES	21+3	D	NO	95586C	ACTIVE
448	2010 ARBOC CHEVY BUS 13'	11	1GB9G5A67A1105332	7010	145112	85	4	2	165	YES	21+3	D	NO	95033C	ACTIVE
449	2010 ARBOC CHEVY BUS 13'	11	1GB9G5A67A1106223	7011	123022	85	4	2	165	YES	21+3	D	NO	95034C	ACTIVE
450	2010 ARBOC CHEVY BUS 13'	11	1GB9G5A60A1106242	7012	136717	85	4	2	165	YES	21+3	D	NO	95082C	ACTIVE
451	2010 ARBOC CHEVY BUS 13'	11	1GB9G5A62A1106162	7013	132949	85	4	2	165	YES	21+3	D	NO	95025C	ACTIVE
452	2010 ARBOC CHEVY BUS 13'	11	1GB9G5A65A1105376	7014	130110	85	4	2	165	YES	21+3	D	NO	95589C	ACTIVE
453	2010 ARBOC CHEVY BUS 13'	11	1GB9G5A68A1123211	7015	128526	85	4	2	165	YES	21+3	D	NO	95029C	ACTIVE
454	2010 ARBOC CHEVY BUS 13'	11	1GB9G5A61A1123261	7016	134498	85	4	2	165	YES	21+3	D	NO	95035C	ACTIVE
455	2012 / ZZZ / ARBOC / LOW FLOOR	11	1GB6G5BL7C1114929	7017	68219	90	2	4	165	YES	21+3	D	NO	98832C	ACTIVE
456	2012 / ZZZ / ARBOC / LOW FLOOR	11	1GB6G5BL5C1115383	7018	59008	90	2	4	165	YES	21+3	D	NO	98835C	ACTIVE
457	2012 / ZZZ / ARBOC / LOW FLOOR	11	1GB6G5BL0C1114738	7019	60886	90	2	4	165	YES	21+3	D	NO	98834C	ACTIVE
458	2012 / ZZZ / ARBOC / LOW FLOOR	11	1GB6G5BL4C1114113	7020	54701	90	2	4	165	YES	21+3	D	NO	98844C	ACTIVE
459	2011 / ZZZ / ARBOC / LOW FLOOR	11	1GB6G5BL3C1114183	7021	55776	90	2	4	165	YES	21+3	D	NO	98843C	ACTIVE
460	2012 / ZZZ / ARBOC / LOW FLOOR	11	1GB6G5BL9C1115712	7022	58073	90	2	4	165	YES	21+3	D	NO	98843C	ACTIVE
461	2012 / ZZZ / ARBOC / LOW FLOOR	11	1GB6G5BL5C1114752	7023	58810	90	2	4	165	YES	21+3	D	NO	98833C	ACTIVE
462	2012 / ZZZ / ARBOC / LOW FLOOR	11	1GB6G5BL9C1116052	7024	64465	90	2	4	165	YES	21+3	D	NO	98846C	ACTIVE
463	2012 / ZZZ / ARBOC / LOW FLOOR	11	1GB6G5BL9C1115029	7025	63383	90	2	4	165	YES	21+3	D	NO	98848C	ACTIVE
404	1917 / /FERRY BOAT	26	214872	CARL2	0	90				NO	150	D	NO	N/A	ACTIVE
	FERRY BOAT	26		PETE		90				YES	120	D	NO	N/A	ACTIVE