

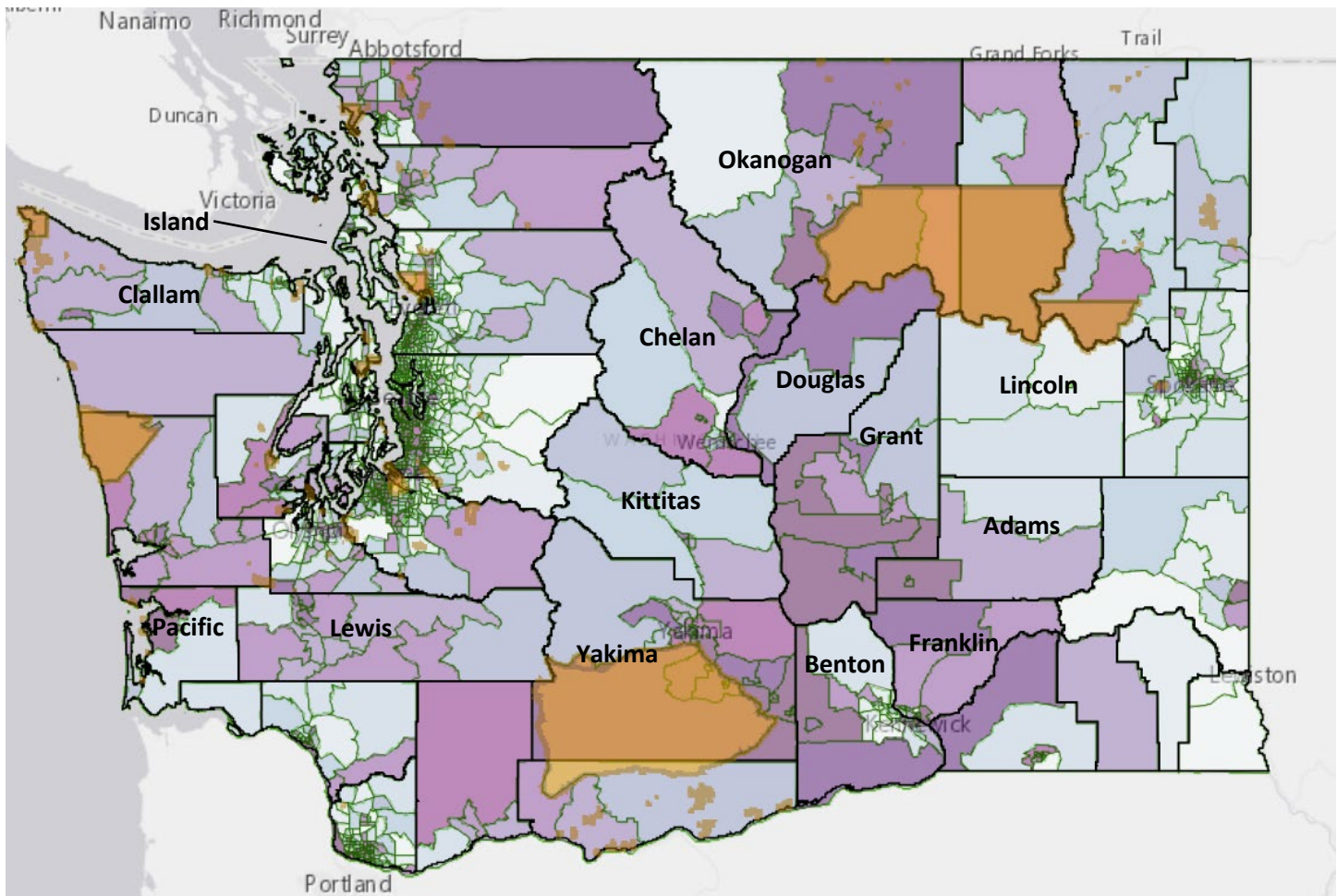


Selection: Environmental Health Disparities V 1.1 -&gt; Socioeconomic Factors

Date: 10/29/2021 at 10:48 AM

ACS:Limited English (LEP) (%), No High School Diploma (%), People of Color (Race/Ethnicity), Population Living in Poverty <=185% of Federal Poverty Level (%), Transportation Expense, Unaffordable Housing (>30% of Income), Unemployed (%)

Legend: (High) 10 9 8 7 6 5 4 3 2 1 (Low)



## Legend

- City Limits
- Climate Projections ~2050
- County Boundaries
- Electric Utilities - Investor
- Electric Utilities - Public
- Former Orchard Lands
- Legislative Districts
- Opportunity Zones
- Railroads
- Rural/Urban Tiers2&4 CT
- School District Boundaries
- Tribal Land Boundary

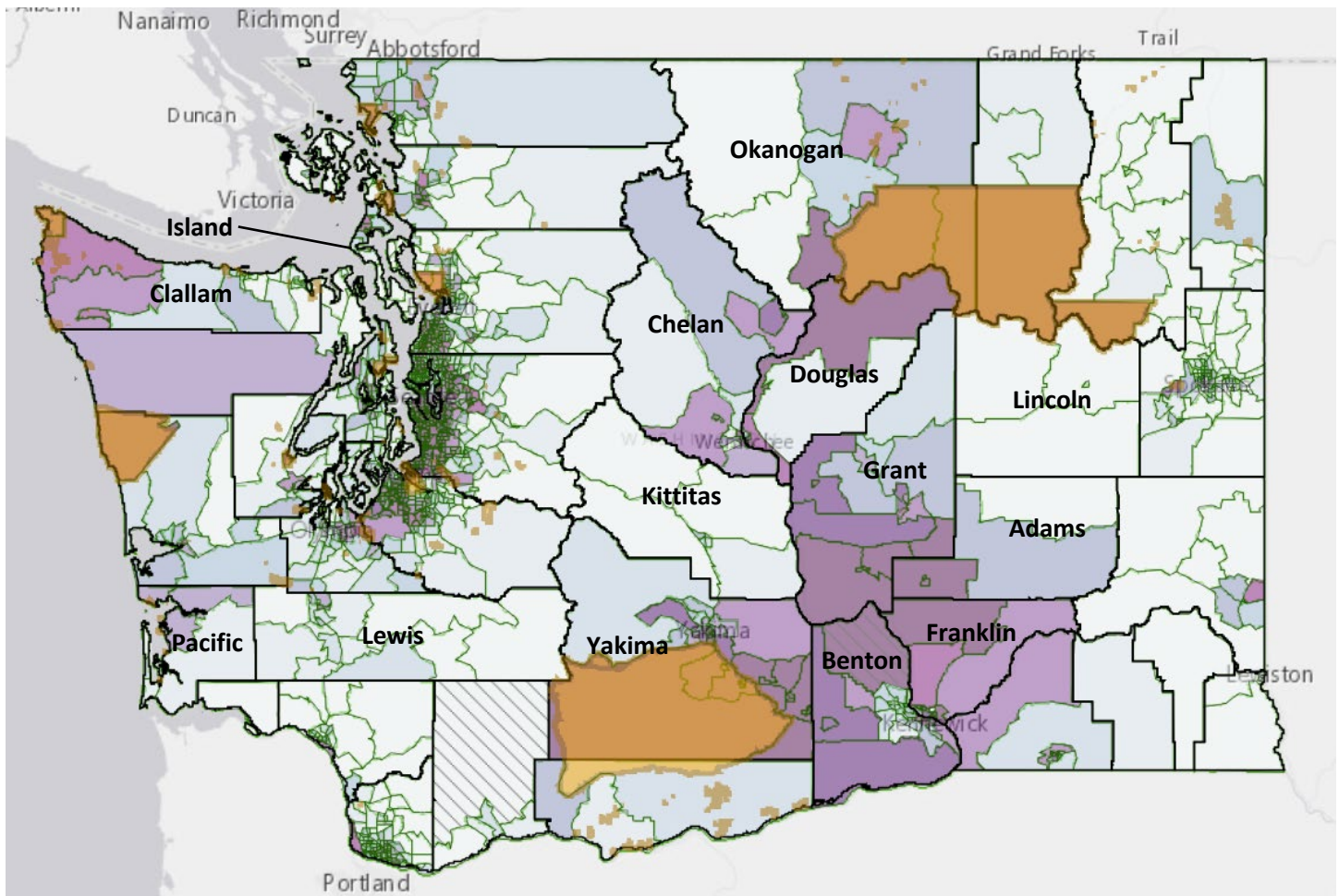


Selection:

Date: 10/29/2021 at 11:57 AM

Environmental Health Disparities V 1.1 -> Socioeconomic Factors -> People of Color (Race/Ethnicity)

Legend: (High) 10 9 8 7 6 5 4 3 2 1 (Low)



## Legend

- City Limits
- Climate Projections ~2050
- County Boundaries
- Electric Utilities - Investor
- Electric Utilities - Public
- Former Orchard Lands
- Legislative Districts
- Opportunity Zones
- Railroads
- Rural/Urban Tiers2&4 CT
- School District Boundaries
- Tribal Land Boundary
- Data **Not Reliable** for some locations.



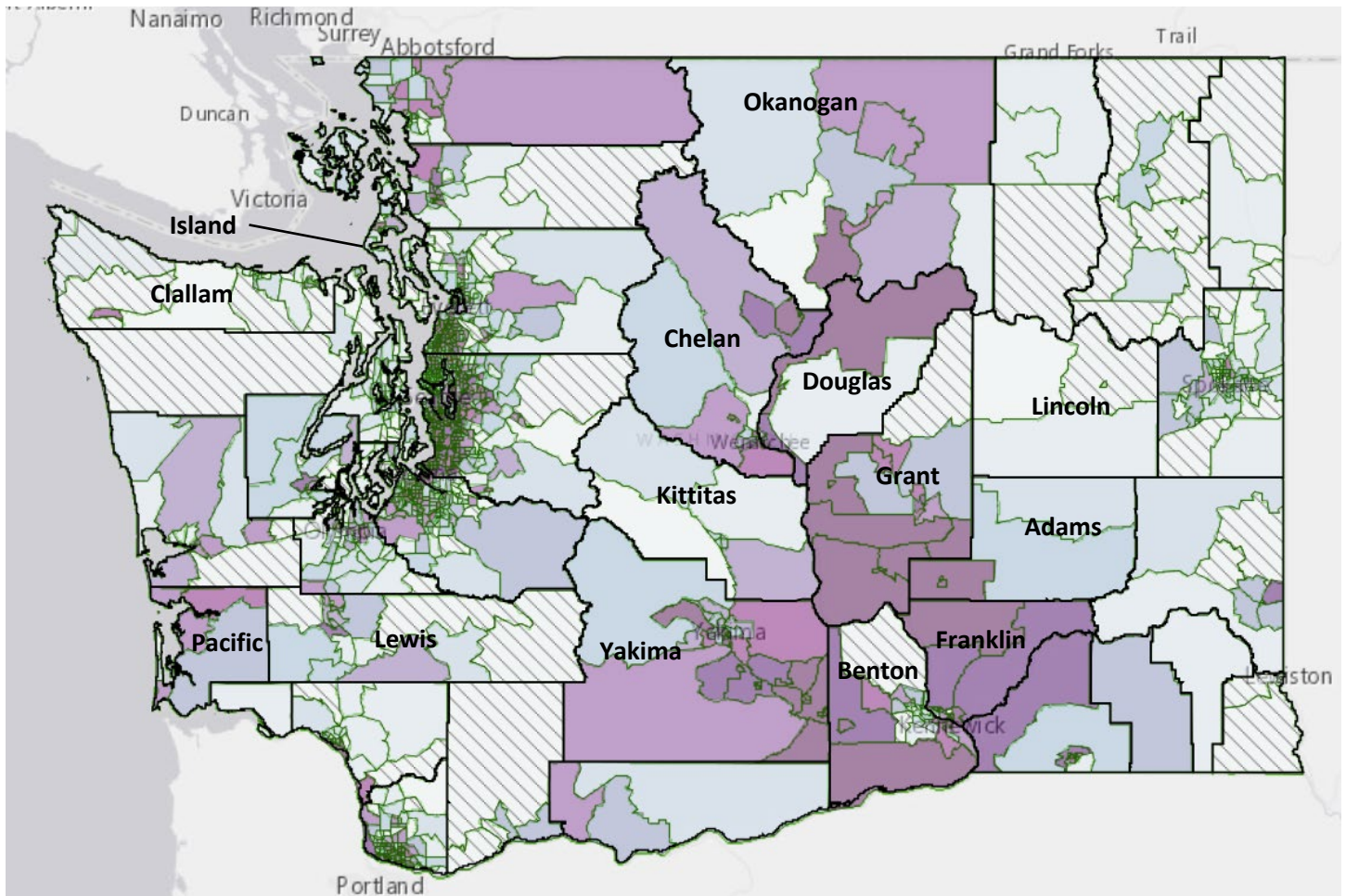


Selection:

Date: 10/29/2021 at 11:51 AM

Environmental Health Disparities V 1.1 -&gt; Socioeconomic Factors -&gt; ACS:Limited English (LEP) (%)

Legend: (High) 10 9 8 7 6 5 4 3 2 1 (Low)



## Legend

- City Limits
- Climate Projections ~2050
- County Boundaries
- Electric Utilities - Investor
- Electric Utilities - Public
- Former Orchard Lands
- Legislative Districts
- Opportunity Zones
- Railroads
- Rural/Urban Tiers2&4 CT
- School District Boundaries
- Tribal Land Boundary
- Data Not Reliable for some locations.

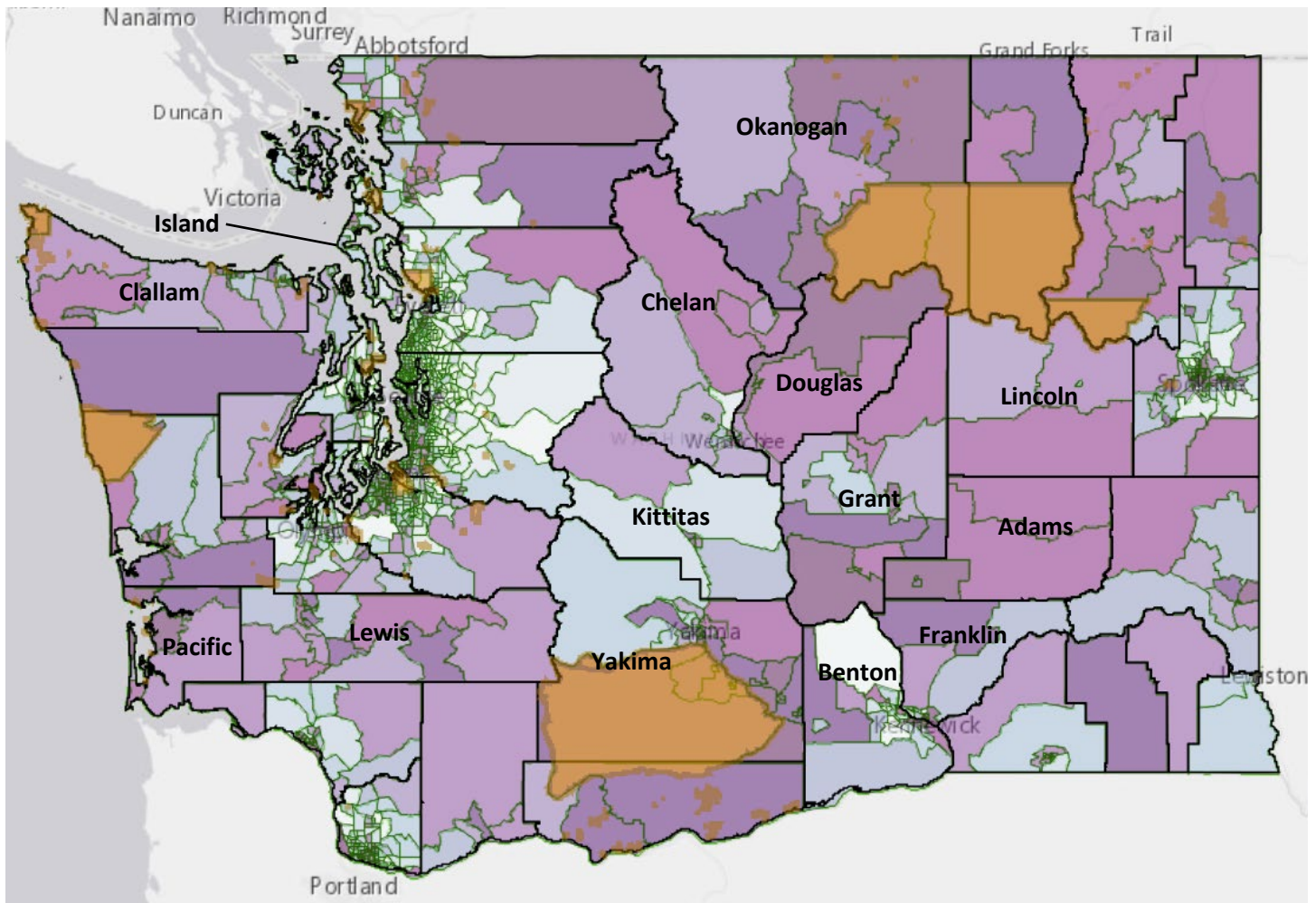


Selection:

Date: 10/29/2021 at 12:30 PM

 Environmental Health Disparities V 1.1 -> Socioeconomic Factors -> **Population Living in Poverty <= 185% of Federal Poverty Level (%)**

Legend: (High) 10 9 8 7 6 5 4 3 2 1 (Low)



## Legend

- City Limits
- Climate Projections ~2050
- County Boundaries
- Electric Utilities - Investor
- Electric Utilities - Public
- Former Orchard Lands
- Legislative Districts
- Opportunity Zones
- Railroads
- Rural/Urban Tiers2&4 CT
- School District Boundaries
- Tribal Land Boundary



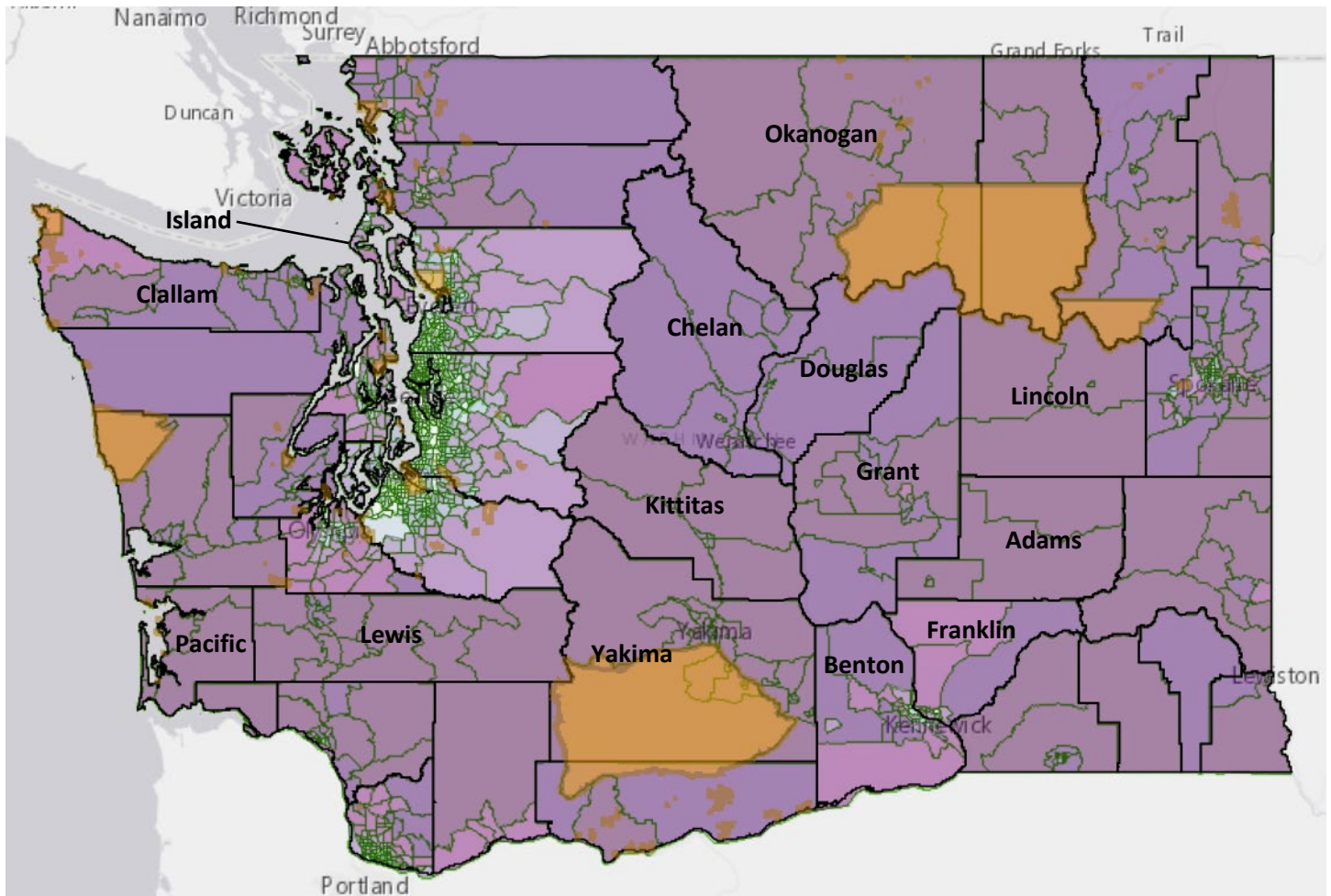


Selection:

Date: 11/05/2021 at 9:18 AM

Environmental Health Disparities V 1.1 -> Socioeconomic Factors -> **Transportation Expense**

Legend: (High) 10 9 8 7 6 5 4 3 2 1 (Low)



## Legend

- City Limits
- Climate Projections ~2050
- County Boundaries
- Electric Utilities - Investor
- Electric Utilities - Public
- Former Orchard Lands
- Legislative Districts
- Opportunity Zones
- Railroads
- Rural/Urban Tiers2&4 CT
- School District Boundaries
- Tribal Land Boundary

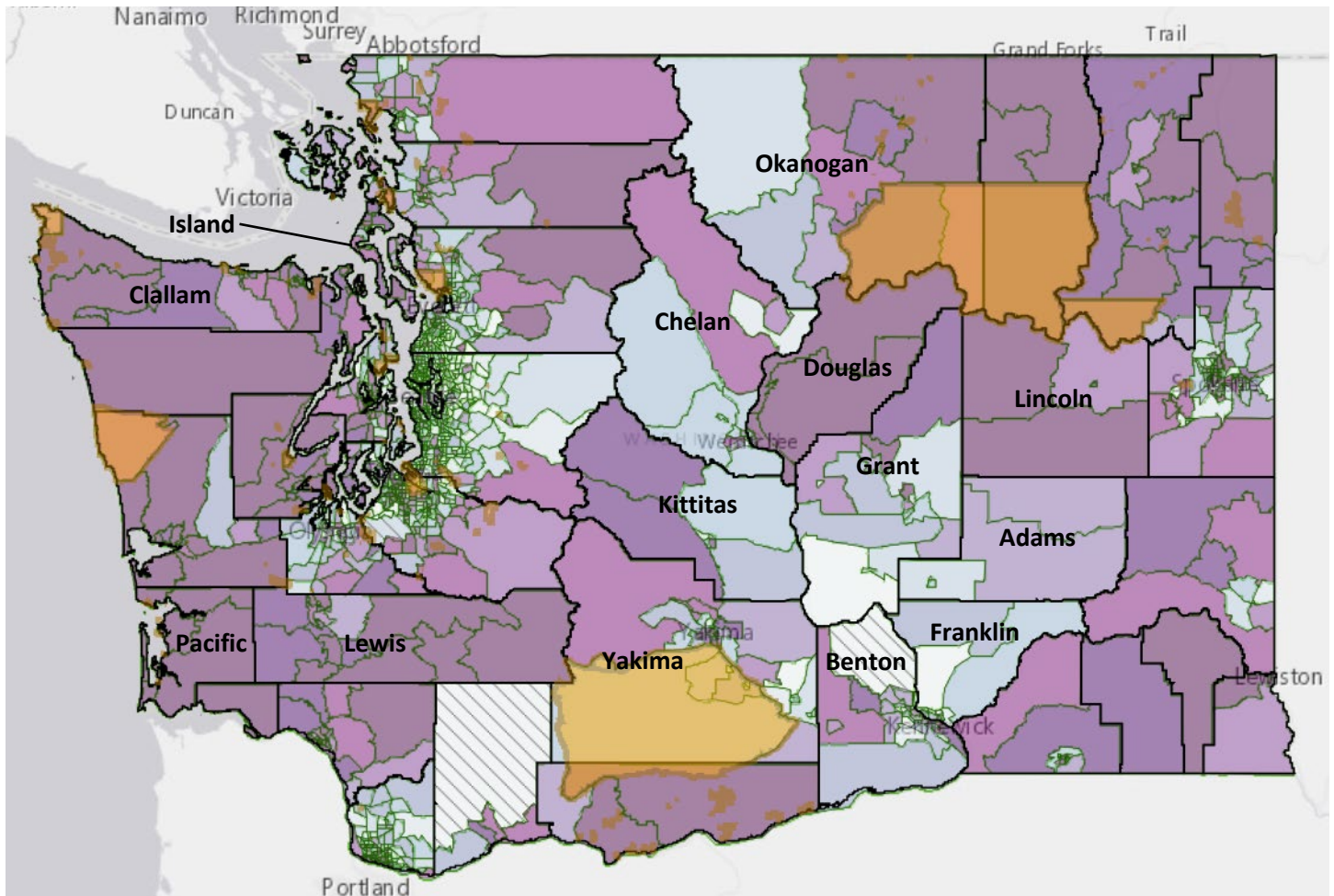


Selection:

Date: 11/05/2021 at 9:29 AM

Social Vulnerability to COVID-19 -> Household Composition & Disability -> **Population with a Disability (%)**

Legend: (High) 10 9 8 7 6 5 4 3 2 1 (Low)



## Legend

- City Limits
- Climate Projections ~2050
- County Boundaries
- Electric Utilities - Investor
- Electric Utilities - Public
- Former Orchard Lands
- Legislative Districts
- Opportunity Zones
- Railroads
- Rural/Urban Tiers2&4 CT
- School District Boundaries
- Tribal Land Boundary
- Data **Not Reliable** for some locations.



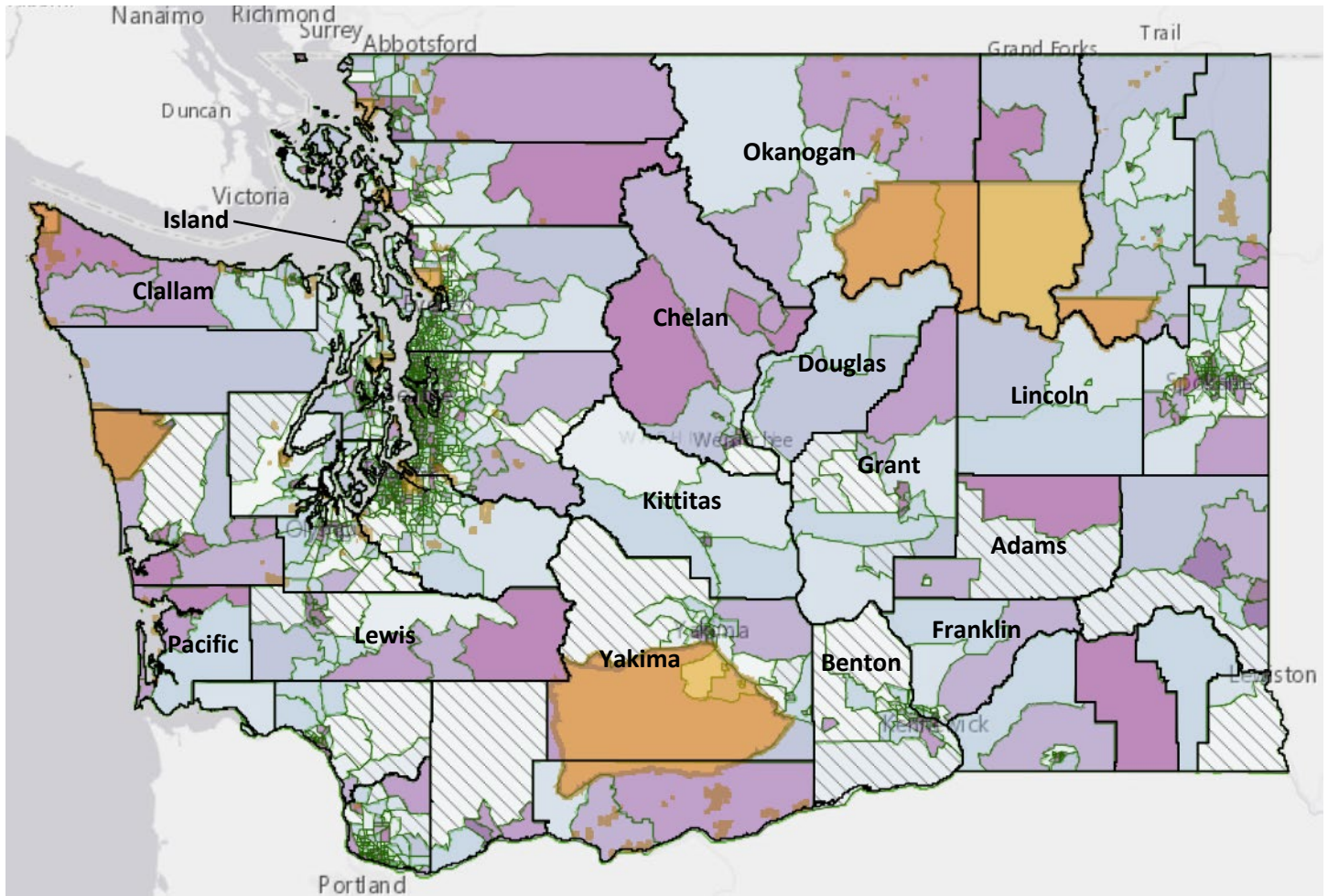


Selection:

Date: 11/05/2021 at 9:39 AM

Social Vulnerability to Hazards -&gt; SocioEconomic -&gt; No Access to a Private Vehicle (%)

Legend: (High) 10 9 8 7 6 5 4 3 2 1 (Low)



## Legend

- City Limits
- Climate Projections ~2050
- County Boundaries
- Electric Utilities - Investor
- Electric Utilities - Public
- Former Orchard Lands
- Legislative Districts
- Opportunity Zones
- Railroads
- Rural/Urban Tiers2&4 CT
- School District Boundaries
- Tribal Land Boundary
- Data [Not Reliable](#) for some locations.

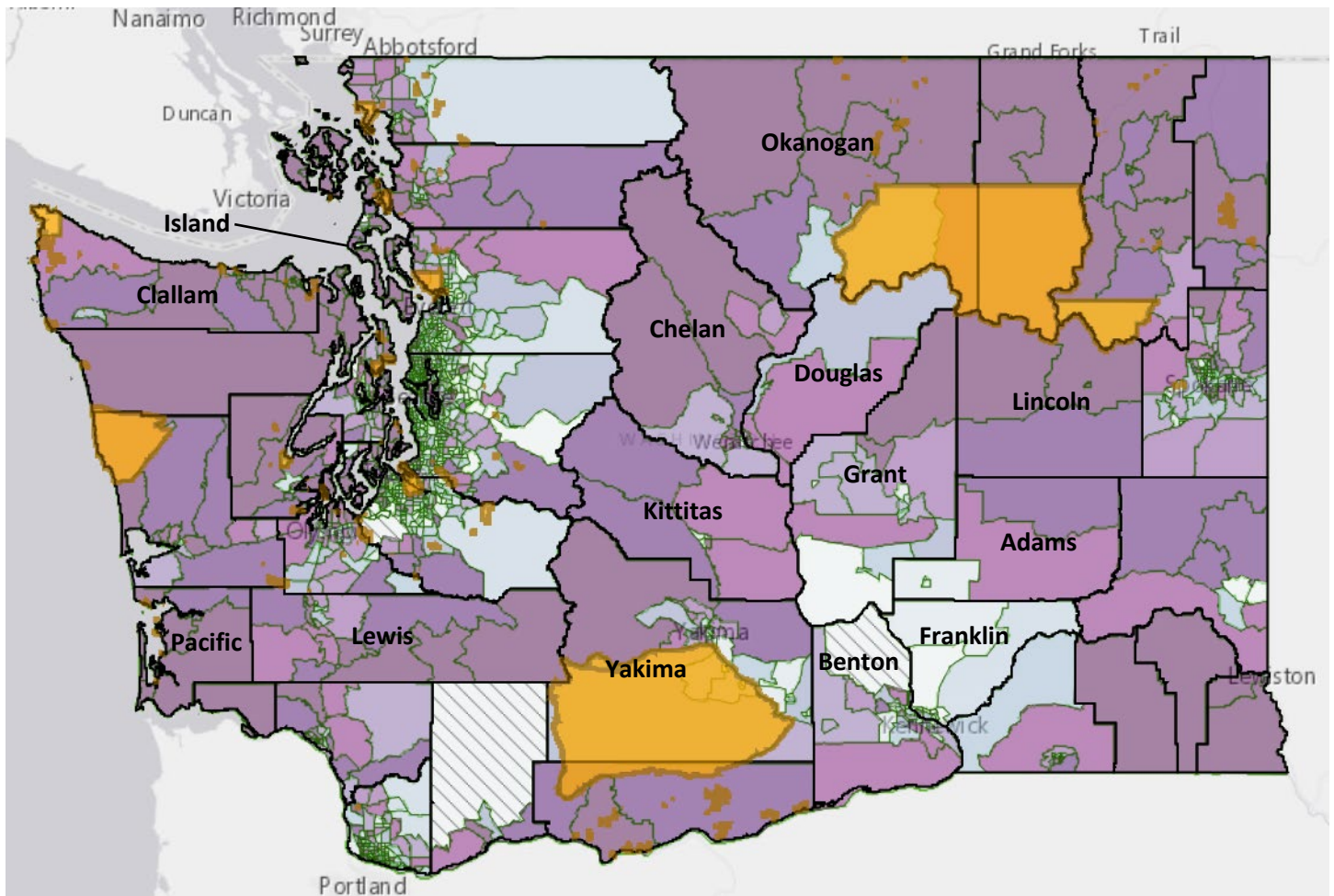


Selection:

Date: 11/05/2021 at 9:53 AM

Social Vulnerability to COVID-19 -&gt; Household Composition &amp; Disability -&gt; Population 65+ (%)

Legend: (High) 10 9 8 7 6 5 4 3 2 1 (Low)



## Legend

- City Limits
- Climate Projections ~2050
- County Boundaries
- Electric Utilities - Investor
- Electric Utilities - Public
- Former Orchard Lands
- Legislative Districts
- Opportunity Zones
- Railroads
- Rural/Urban Tiers2&4 CT
- School District Boundaries
- Tribal Land Boundary
- Data Not Reliable for some locations.



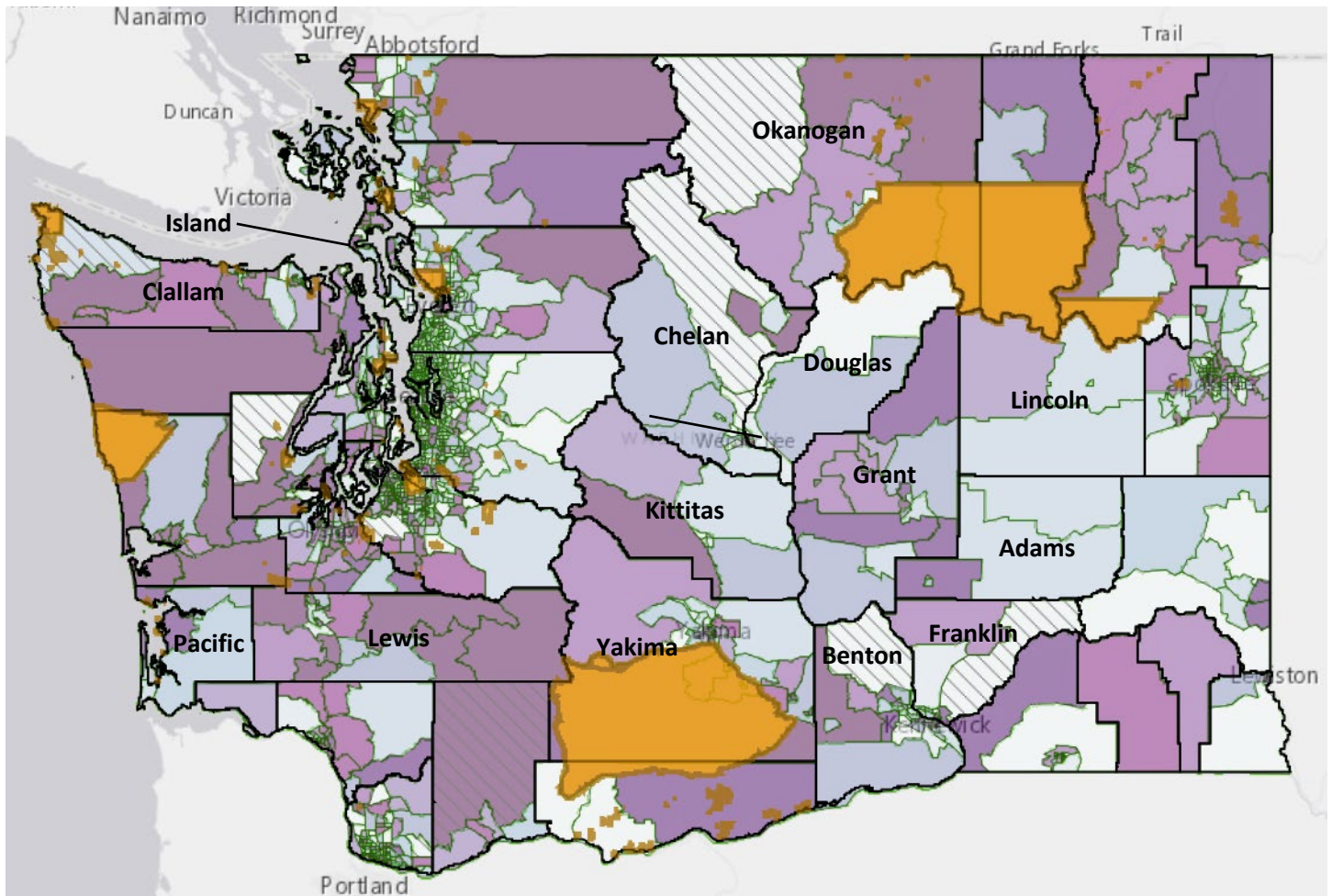


Selection:

Environmental Health Disparities V 1.1 -> Socioeconomic Factors -> **Unemployed (%)**

Date: 11/05/2021 at 10:04 AM

Legend: (High) 10 9 8 7 6 5 4 3 2 1 (Low)



## Legend

- City Limits
- Climate Projections ~2050
- County Boundaries
- Electric Utilities - Investor
- Electric Utilities - Public
- Former Orchard Lands
- Legislative Districts
- Opportunity Zones
- Railroads
- Rural/Urban Tiers2&4 CT
- School District Boundaries
- Tribal Land Boundary
- Data **Not Reliable** for some locations.

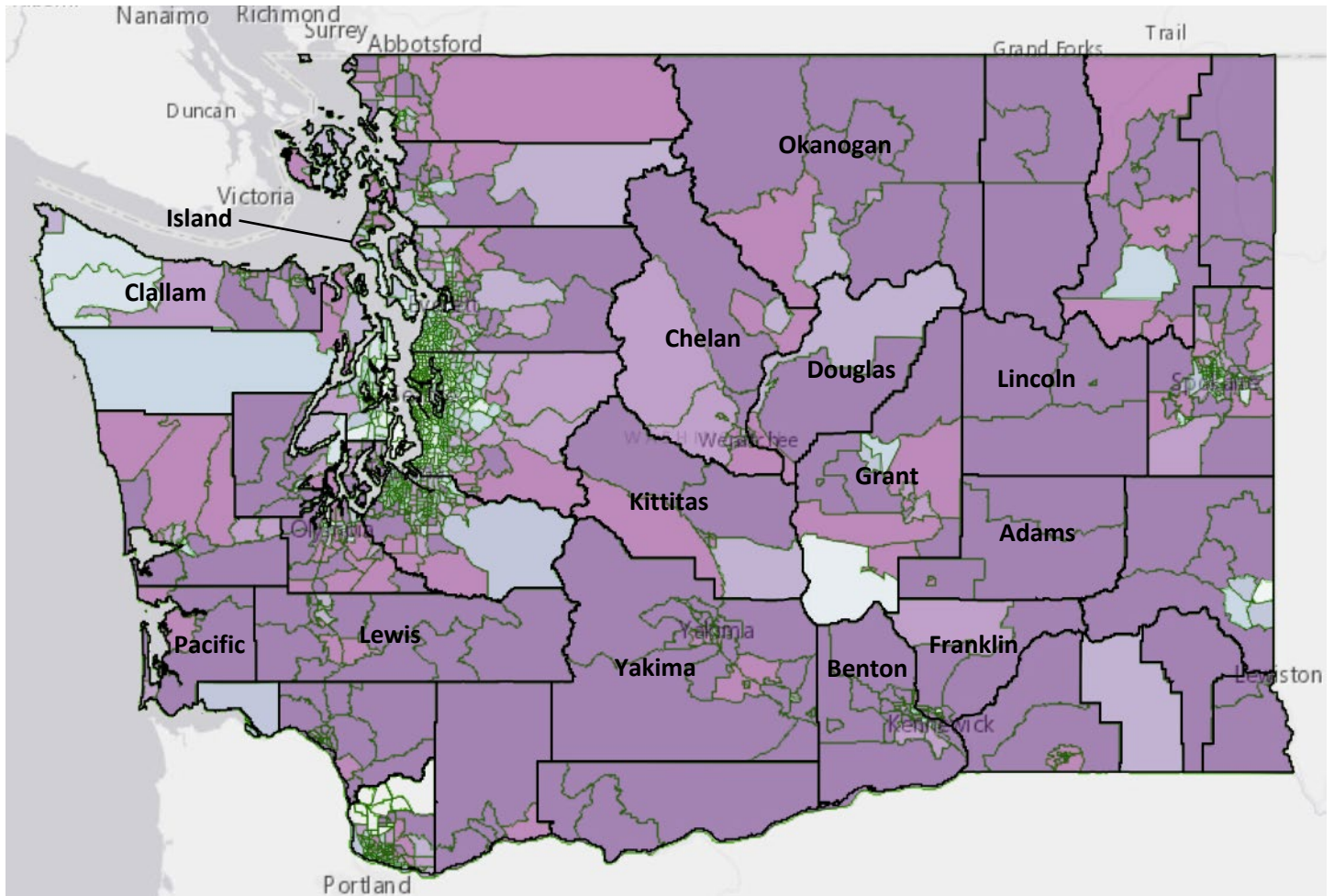


Selection: Planning for Health -&gt; Transportation -&gt;

Limited Public Transit to Work (%)

Date: 11/05/2021 at 12:06 PM

Legend: (High) 10 9 8 7 6 5 4 3 2 1 (Low)



## Legend

- City Limits
- Climate Projections ~2050
- County Boundaries
- Electric Utilities - Investor
- Electric Utilities - Public
- Former Orchard Lands
- Legislative Districts
- Opportunity Zones
- Railroads
- Rural/Urban Tiers2&4 CT
- School District Boundaries
- Tribal Land Boundary



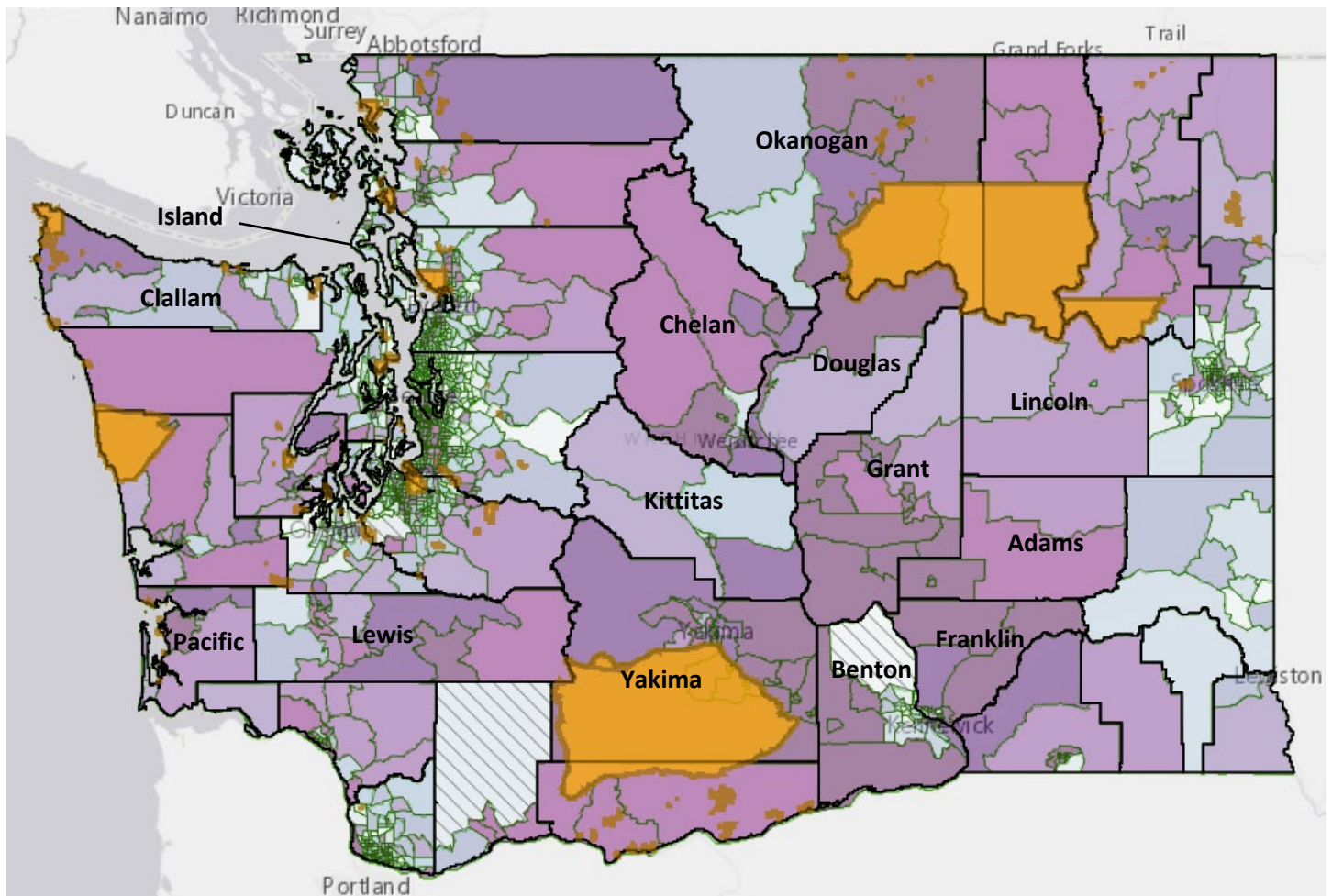


Selection:

Date: 11/05/2021 at 12:36 PM

Environmental Health Disparities V 1.1 -&gt; Socioeconomic Factors -&gt; No High School Diploma (%)

Legend: (High) 10 9 8 7 6 5 4 3 2 1 (Low)



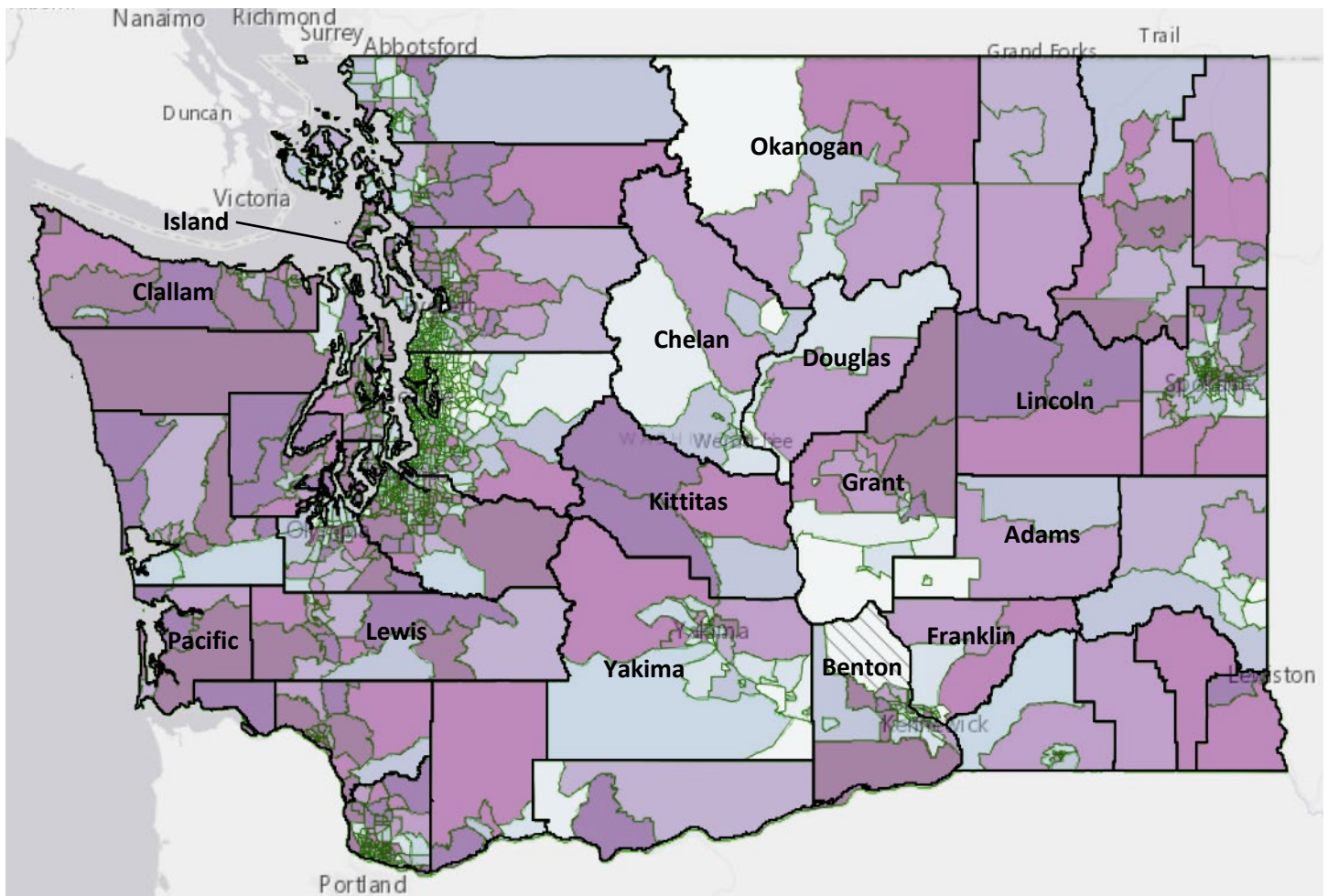
## Legend

- City Limits
- Climate Projections ~2050
- County Boundaries
- Electric Utilities - Investor
- Electric Utilities - Public
- Former Orchard Lands
- Legislative Districts
- Opportunity Zones
- Railroads
- Rural/Urban Tiers2&4 CT
- School District Boundaries
- Tribal Land Boundary
- Data Not Reliable for some locations.

Selection: Planning for Health -> Education -> **Some College - No Degree (%)**

Date: 11/05/2021 at 12:45 PM

Legend: (High) 10 9 8 7 6 5 4 3 2 1 (Low)



## Legend

- City Limits
- Climate Projections ~2050
- County Boundaries
- Electric Utilities - Investor
- Electric Utilities - Public
- Former Orchard Lands
- Legislative Districts
- Opportunity Zones
- Railroads
- Rural/Urban Tiers2&4 CT
- School District Boundaries
- Tribal Land Boundary
- Data **Not Reliable** for some locations.



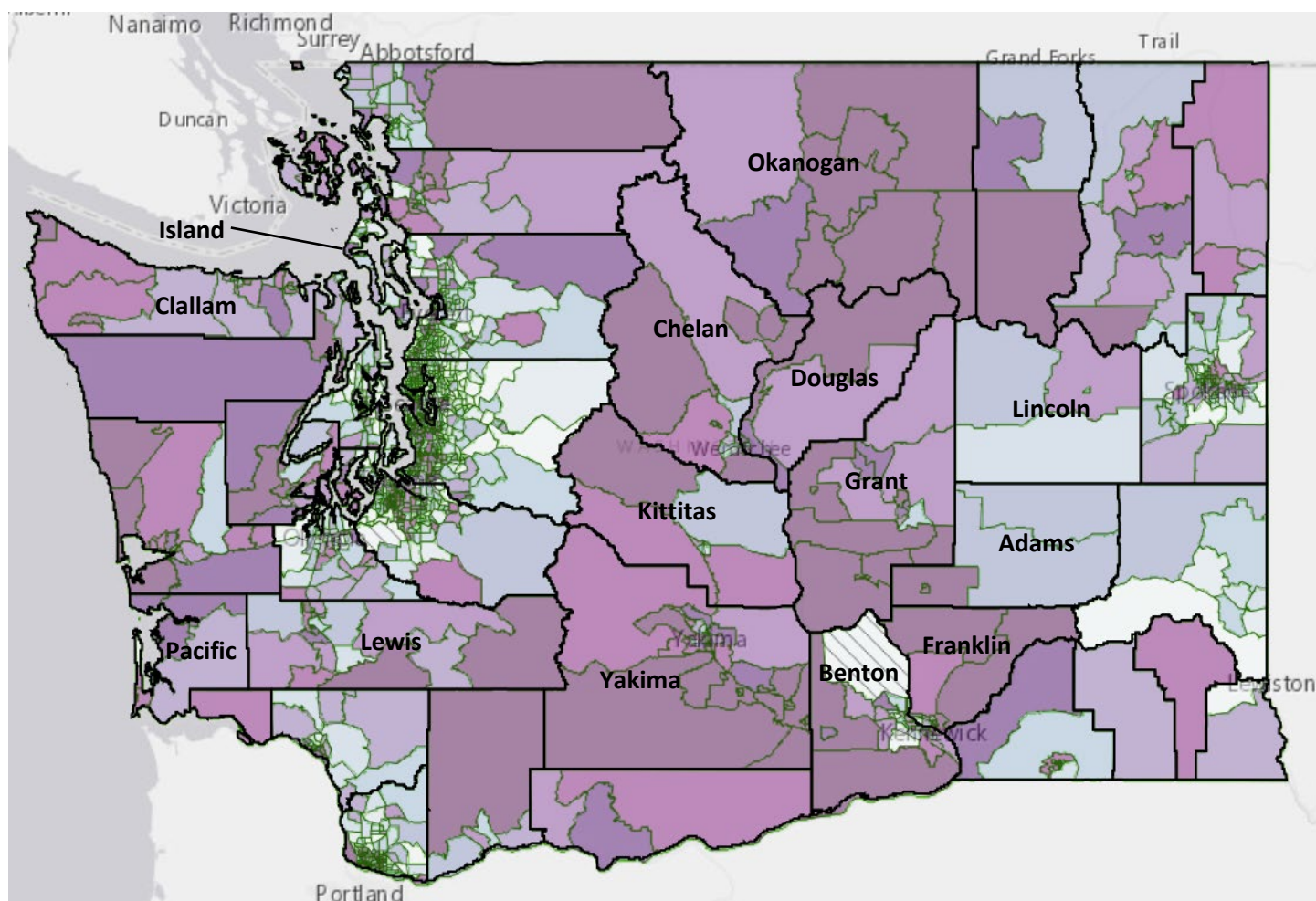


Selection:

Date: 11/05/2021 at 1:08 PM

Planning for Health -&gt; Health Outcomes -&gt; Population 19 to 64 with No Health Insurance (%)

Legend: (High) 10 9 8 7 6 5 4 3 2 1 (Low)



## Legend

- City Limits
- Climate Projections ~2050
- County Boundaries
- Electric Utilities - Investor
- Electric Utilities - Public
- Former Orchard Lands
- Legislative Districts
- Opportunity Zones
- Railroads
- Rural/Urban Tiers2&4 CT
- School District Boundaries
- Tribal Land Boundary
- Data Not Reliable for some locations.

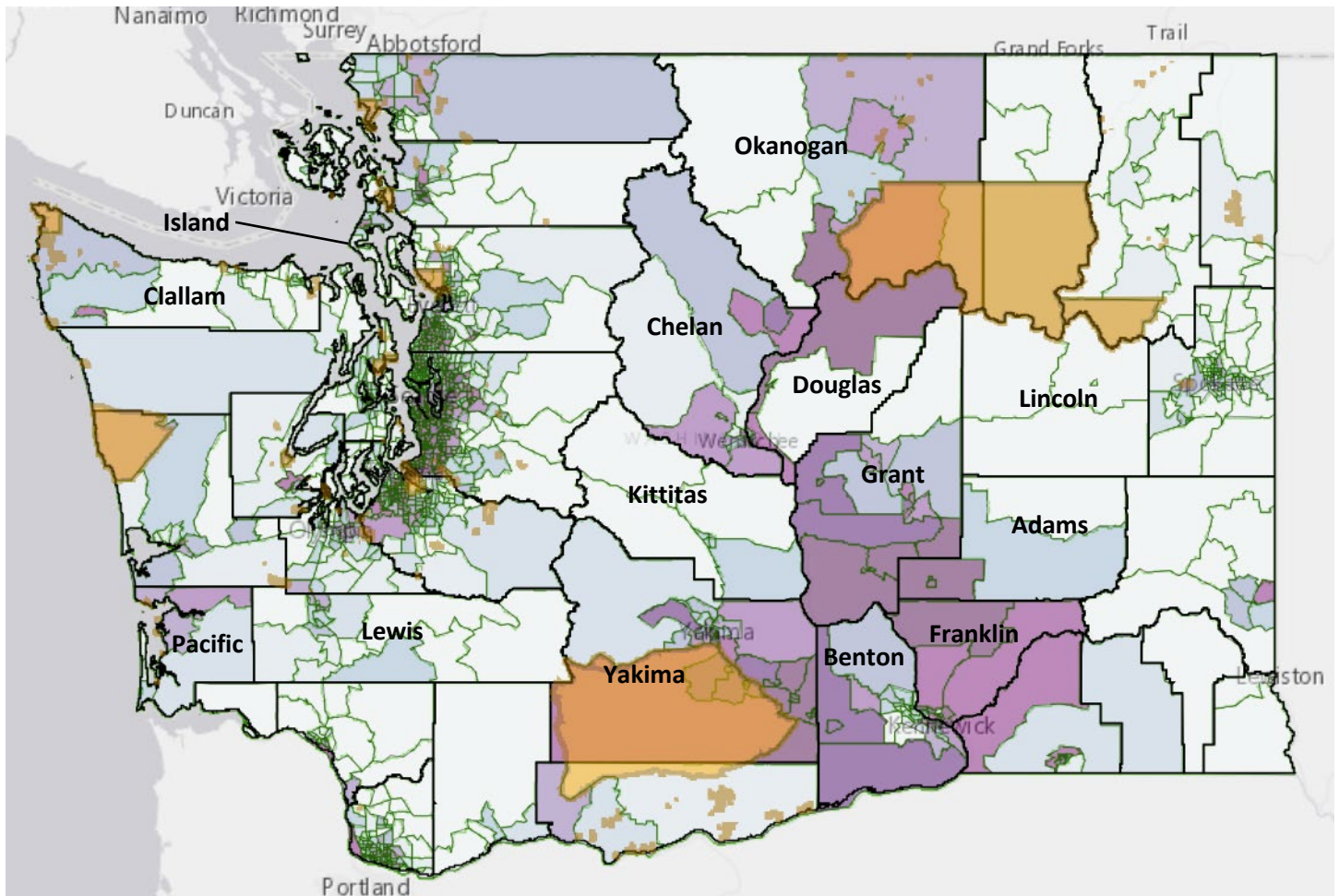


Selection: Social Vulnerability to COVID-19 -&gt; Race, Ethnicity, &amp; Language

Date: 11/09/2021 at 5:17 PM

ACS:Limited English (LEP) (%), People of Color (Race/Ethnicity)

Legend: (High) 10 9 8 7 6 5 4 3 2 1 (Low)



## Legend

- City Limits
- Climate Projections ~2050
- County Boundaries
- Electric Utilities - Investor
- Electric Utilities - Public
- Former Orchard Lands
- Legislative Districts
- Opportunity Zones
- Railroads
- Rural/Urban Tiers2&4 CT
- School District Boundaries
- Tribal Land Boundary



## Households Without Internet Access

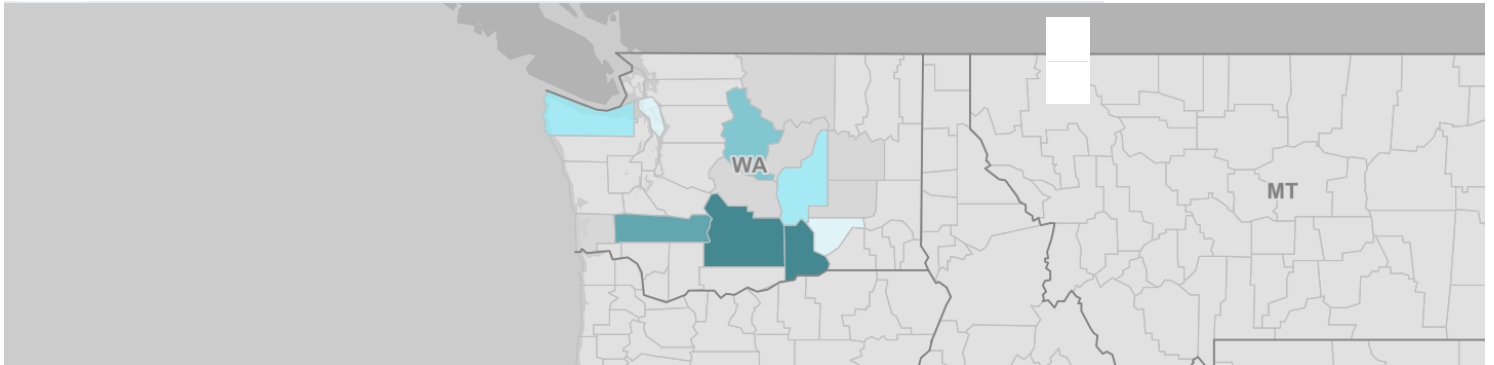
**Total:—No Internet access—Estimate** in **14 Geos** in **2019**

Survey/Program: American Community Survey

Product: 2019: ACS 1-Year Estimates Detailed Tables

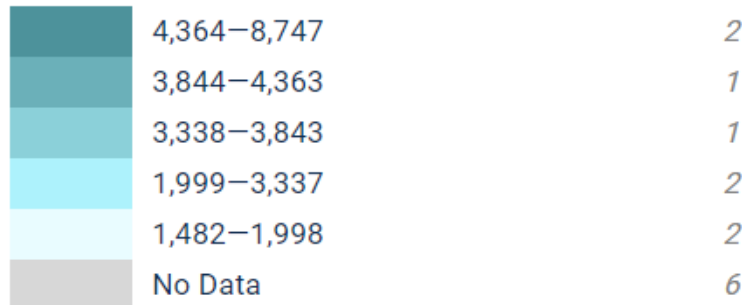
Geographies: County

Select Clear Geos Basemap Table Notes



**Total:—No Internet access  
—Estimate in 2019**

**Geos: 14**



*Italicized numbers indicate the number of geography areas in each data class.*



100 mi

Geography	Total:—No Internet access—Estimate
Benton County, Washington	4,915
Chelan County, Washington	3,843
Clallam County, Washington	2,866
Franklin County, Washington	1,998
Grant County, Washington	3,337
Island County, Washington	1,482
Lewis County, Washington	4,363
Yakima County, Washington	8,747