

Steel Tank

Flat Top Smooth Wall

Overview:

Store liquids with confidence with Rain for Rent's Flat Top Smooth Wall tank. Permanently attached axles, for maximum maneuverability, allows this tank to be moved with ease on the jobsite. The staircase ensures proper protection for workers on site. The tank also offers optional epoxy coating, which offers chemical resistance and additional cleanliness for sensitive environmental applications.

Features:

- Vapor Tight Tanks: rated to 16oz/in² of pressure and 0.4oz/in² of vacuum
- V-drain floor with front and rear 4" 150-lb flanges with valves
- OSHA Compliant Stairway
- 1.5" SCH80 level gauge port
- 8" External manifold or internal manifold
- Rear 3" or 6" SCH40 fill line
- Optional: Epoxy Coating - chemical resistance for a wide variety of chemical compatibility and keeps stored product within the tank cleaner
- Optional: Steam Coils

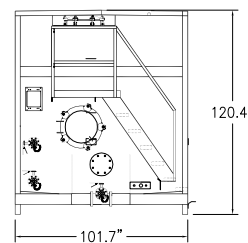
Accessories:

- E-CONTAIN® Spillguards
- SolidGround® Traction Mats
- Radar Level Gauge
- Mechanical Level Gauge
- PipeStax®
- HoseTrax®
- Suction and Discharge Hose

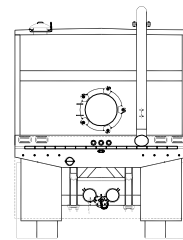


Specs:

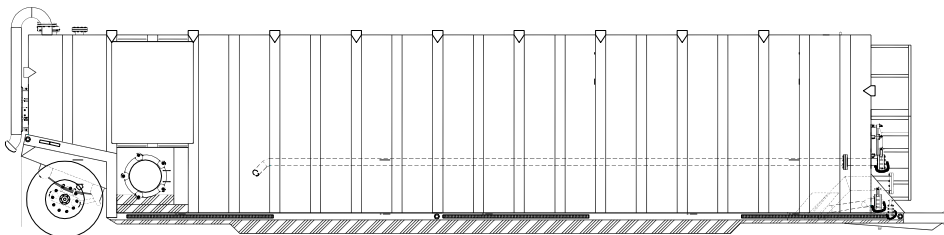
Material	Steel, Epoxy Coated (Option)
Capacity	21,000 gallons
Manways	Four 22" hatches
Dry weight	29,500 lbs.
Footprint (LxWxH):	560" x 102" x 120"



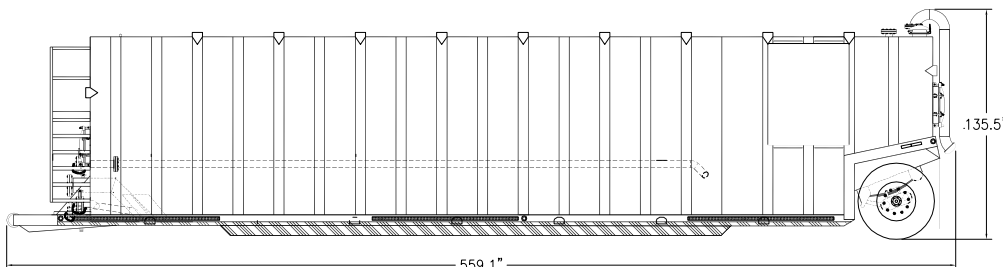
FRONT VIEW



REAR VIEW



PASSENGER SIDE VIEW



DRIVER SIDE VIEW



PUMPS • TANKS • FILTRATION • PIPE • SPILLGUARDS

Rain for Rent is a registered trademark of Western Oilfields Supply Company. Features and specifications are subject to change without notice.

Liquid Ingenuity®
800-742-7246
rainforrent.com

DRAFT (NOT FOR CONSTRUCTION)

I-405 RIPLEY LANE STREAM CONNECTION PROJECT

ACTIVITY 1

The maximum daily discharge= 30040+36000 66040 gallon per day
45.86 gallons per min

- 1- The required sedimentation tank volume= 45.86 X 90 4127.4 gallons
Will use Volume : (21000 gallons- Length= 35 ft Width 8 ft and Hight 10.02 ft)
- 2- The Maximum Overflow Rate= 45.86/(35X8) 0.16 less than 1
- 3- The minimun length-to Width Ratio= 35/8 4.38 above 4:1
- 4- The Maximum Sediment Accumulation = 2.51 feet at mid point
or less than 25%

ACTIVITY 2

The maximum daily discharge= 30660+720000 750660 gallon per day
521.29 gallons per min

- 1- The required sedimentation tank volume= 521.29 X 90 46916 gallons
Will use Volume : 3 X (21000 gallons- Length= 35 ft Width 8 ft and Height 10.02 ft)
- 2- The Maximum Overflow Rate= 521.29/(3X35X8) 0.62 which is less than 1
- 3- The minimun length-to Width Ratio= 35/8 4.38 above 4:1
- 4- The Maximum Sediment Accumulation = 2.51 feet at mid point

This calculation is based on the technical memorandum - (October 2011 Ver.1)
King County Industrial Waste Program
Minimum Standard for Sedimentation Tanks Used at Construction Sites